

# Nationaler Info-Day zum 2. Call des Programms INTERREG CENTRAL EUROPE 2021-2027

## Digitale Informationsveranstaltung des National Contact Points am 13. April 2023

### Programm (1)

10:00	<b>Begrüßung und Einleitung</b>	Alexandra Deimel, BML
10:15	<b>Das Interreg Central Europe Programm in Kürze – #cooperationiscentral“ seit mehr als 25 Jahren...</b>	Andrea Rainer Cerovská, ÖROK-Gst./NCP
10:30	<b>Interreg Central Europe – Der 2. Call for Project Proposals: Rahmenbedingungen für die Projektentwicklung, Prioritäten und Interventionslogik</b>	Andrea Rainer Cerovska, ÖROK-Gst./NCP Claudia Pamperl, Interreg CE Joint Secretariat
11:15	Fragen & Antworten	
11:45	<i>Kaffeepause</i>	
12:00	<b>Interreg Central Europe – Eine Projektgeschichte aus Österreich: DigiCare4CE</b>	Sandra Dohr, GGZ Graz – Albert Schweitzer Institut



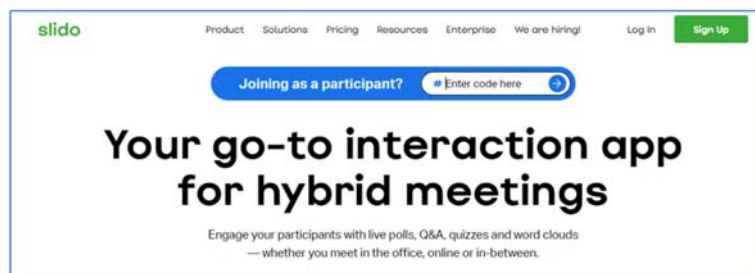
## Programm (2)

12:15	<b>Interreg Central Europe – Projekt- und Finanzmanagement (inkl. Förderfähigkeitsregeln)</b>	Claudia Pamperl, Interreg CE Joint Secretariat Andrea Rainer Cerovska, ÖROK-Gst./NCP
13:00	<b>Unterstützungsangebote und nationale Eckpunkte für die Projektentwicklung inkl. österreichisches Prüfsystem 2021-2027</b>	Claudia Pamperl, Interreg CE Joint Secretariat Andrea Rainer Cerovska, ÖROK-Gst./NCP Vivian Thurner, BML
13:25	Fragen & Antworten	
13:50	<b>Resümee</b>	Thomas Huemer, Land Oberösterreich
14:00	<b>Ende der Veranstaltung</b>	



## Fragestellungen über Sli.Do

LINK:  
**SLI.DO**  
[www.sli.do.com](http://www.sli.do.com)



Event link: <https://app.sli.do/event/m4HXktCyZmCHCzrZML5tfZ>

Event code: (N5yjwjlHJHf07)

Fragen bitte im Bereich **Questions & Answers (Q&A)** schreiben und/oder liken  
kleine Umfragen zu Beginn und am Ende des Info-Days (werden immer durch Veranstalter aktiviert)

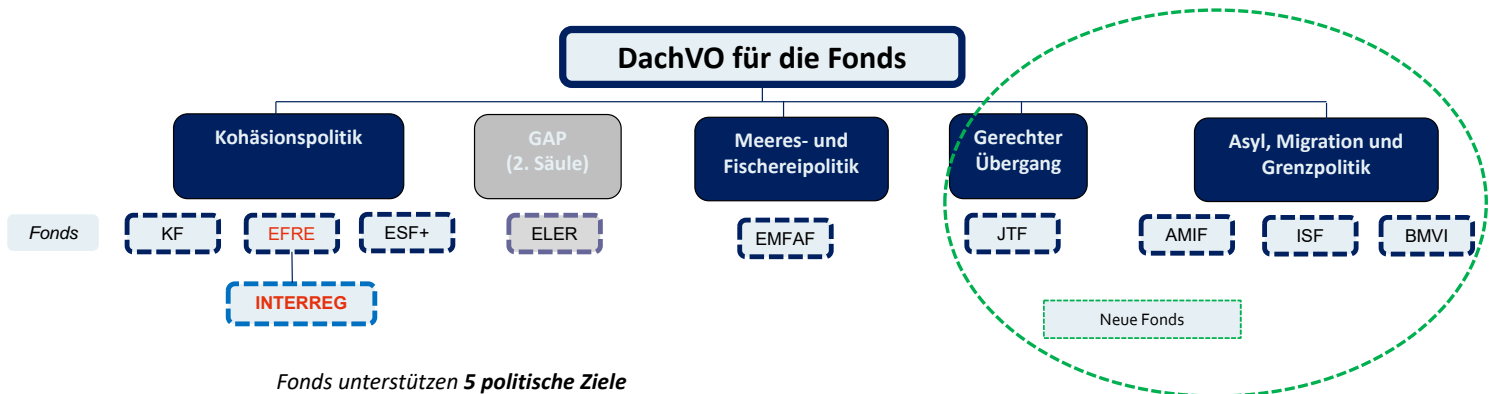
## Einführung

Alexandra Deimel, Bundesministerium für Land- und Forstwirtschaft, Regionen und Wasserwirtschaft

## Allgemeine Zielsetzungen – Zielsetzung Interreg

- **Ziel der Kohäsion** in AEUV Art. 174 bis 176 festgelegt: *Stärkung des wirtschaftlichen, sozialen und territorialen Zusammenhalts*
- mit **rd. 1/3 des EU-Haushalts - 378 Mrd. €** - zählt die Kohäsionspolitik auch weiterhin **zu den wichtigsten Investitionspolitiken der EU**
- kohäsionspolitische Instrumente (EFRE, ESF+) können **in allen Regionen Europas** eingesetzt werden!
- ❖ **Zielsetzung Interreg:** „Um die harmonische Entwicklung des Unionsgebiets auf verschiedenen Ebenen zu fördern, sollte der EFRE die **grenzübergreifende Zusammenarbeit, die transnationale Zusammenarbeit, die interregionale Zusammenarbeit** und die Zusammenarbeit der Gebiete in äußerster Randlage im Rahmen des Ziels Interreg unterstützen.“;  
dafür stehen **EU-weit 9,9 Mrd. €** zur Verfügung (insg. 86 Interreg Programme – 14 davon transnational)

## Kohäsionspolitik 2021-2027: Architektur und 5 politische Ziele



Fonds unterstützen 5 politische Ziele

**EFRE:** Europäischer Fonds für Regionale Entwicklung  
**ESF+:** Europäischer Sozialfonds Plus  
**ELER:** Europäischer Fonds für die Ländliche Entwicklung  
**EMFAF:** Europäischer Meeres- Fischerei und Aquakulturfonds  
**JTF –** Fonds für einen gerechten Übergang (Just Transition Fund)  
**AMIF:** Asyl-, Migrations- und Integrationsfonds  
**ISF:** Fonds für Innere Sicherheit  
**BMVI:** Instrument für finanzielle Hilfe im Bereich Grenzverwaltung und Visumpolitik

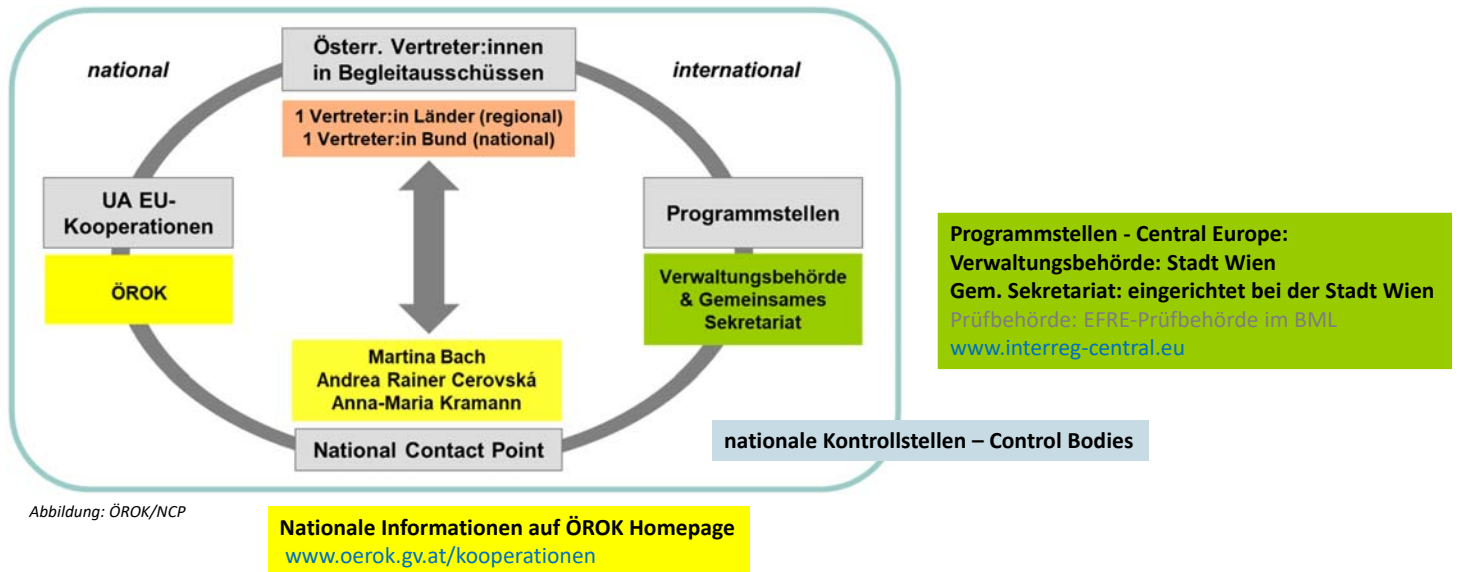
Anmerkung: GAP/2. Säule/ELER: nicht mehr von DachVO umfasst!  
 ELER weiterhin auf die Entwicklung der ländlichen Regionen ausgerichtet

7

## Fonds unterstützen 5 politische Ziele + EFRE auch 2 Interreg spezifische Ziele (IO)

- I. **Ein wettbewerbsfähigeres und intelligenteres Europa** – Förderung eines innovativen und intelligenten wirtschaftlichen Wandels und regionale IKT-Konnektivität
- II. **Ein grüneres, CO<sub>2</sub>-armes und widerstandsfähigeres Europa** – Förderung von sauberen Energien und einer fairen Energiewende, der Kreislaufwirtschaft, der Anpassung an den Klimawandel, der Risikoprävention und des Risikomanagements, nachhaltige städtische Mobilität
- III. **Ein stärker vernetztes Europa** – Steigerung der Mobilität
- IV. **Ein sozialeres und inklusiveres Europa** – Umsetzung der europäischen Säule sozialer Rechte
- V. **Ein bürgernäheres Europa** – Förderung einer nachhaltigen und integrierten Entwicklung aller Arten von Gebieten und lokalen Initiativen
- IO I. **Bessere Governance in Bezug auf die Zusammenarbeit** – u.a. Verbesserung der institutionellen Kapazitäten für die Umsetzung von MRS und anderer territorialer Strategien, Abbau von administrativen oder rechtlichen Hindernissen in Grenzregionen
- IO II. **Mehr Sicherheit in Europa** - u.a. Grenz, Mobilitäts, Migrationsmanagement

## Begleitstrukturen Interreg transnational und interregional



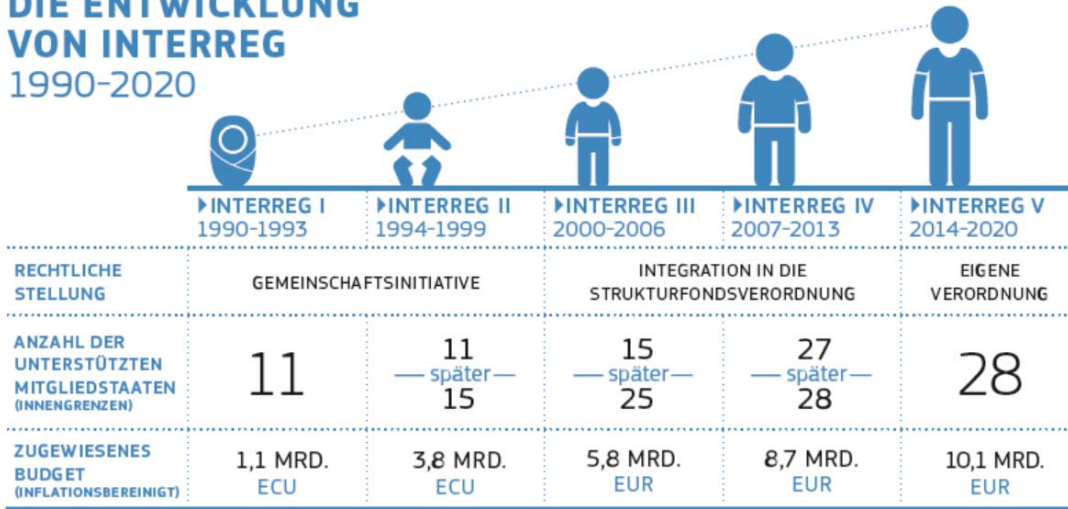
9



Das Interreg Central Europe Programm in Kürze – #cooperationiscentral“ seit mehr als 25 Jahren...  
Andrea Rainer Cerovská, ÖROK-Gst./NCP

# INTERREG... seit mehr als 30 Jahren...

## DIE ENTWICKLUNG VON INTERREG 1990-2020



Quelle: Europäische Kommission; Entwicklung von Interreg 1990–2020

Bundesministerium Land- und Forstwirtschaft, Regionen und Wasserwirtschaft

EU-Kooperationen

13.04.2023

11

# INTERREG CENTRAL EUROPE... #cooperationiscentral“ seit mehr als 25 Jahren...

Interreg CENTRAL EUROPE Co-funded by the European Union



2000-2006: CADSES



2007-2013: Central Europe



2014-2020: Interreg Central Europe

Bundesministerium Land- und Forstwirtschaft, Regionen und Wasserwirtschaft

EU-Kooperationen

13.04.2023

12

# The Interreg CE Programme 2021-2027



9 Countries

81 Regions

4 Programme Priorities

9 Programme Specific Objectives

224 million Euro

7 Years

13

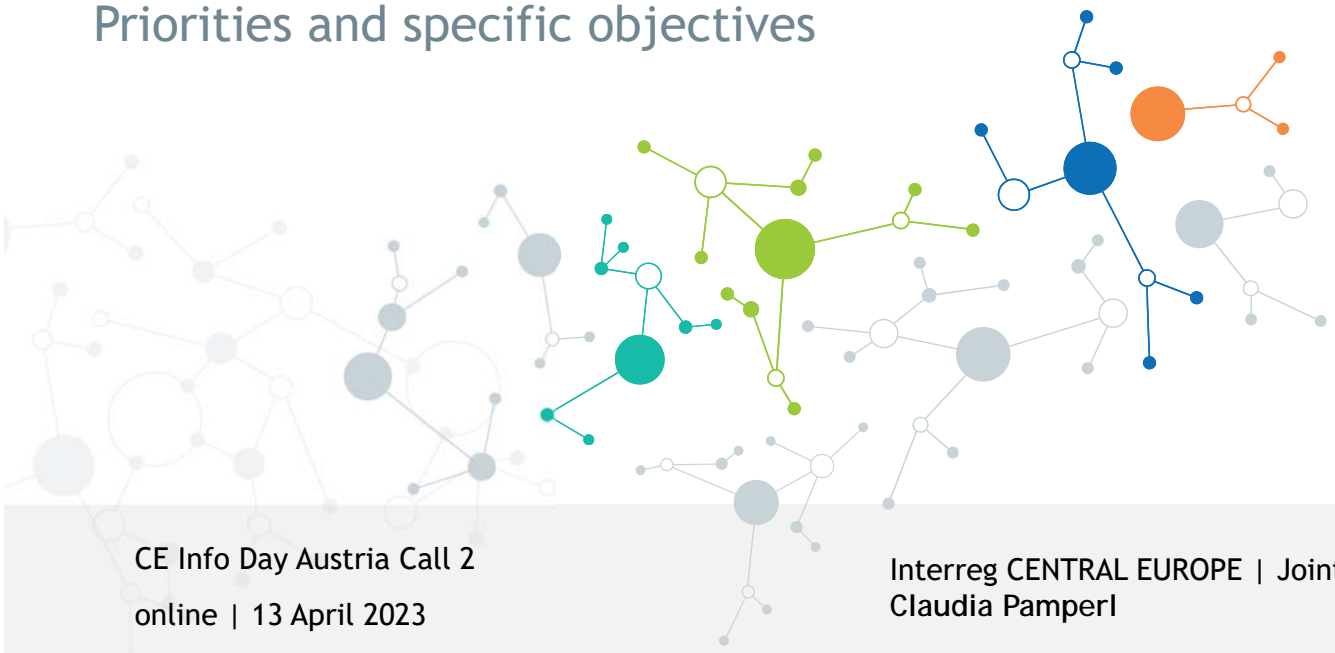


## Interreg Central Europe – Der 2. Call for Project Proposals: Rahmenbedingungen für die Projektentwicklung, Prioritäten und Interventionslogik

Andrea Rainer Cerovská, ÖROK-Geschäftsstelle – National Contact Point

Claudia Pamperl, Interreg Central Europe Joint Secretariat

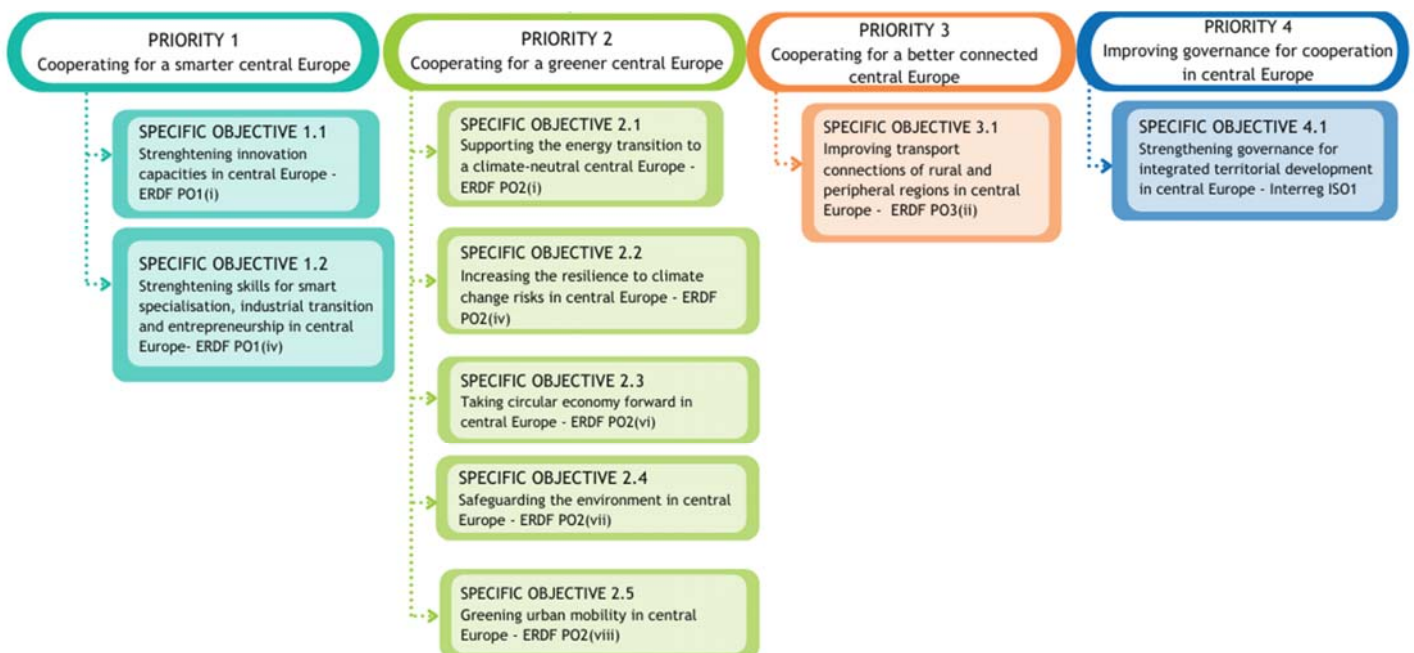
# Priorities and specific objectives



CE Info Day Austria Call 2  
online | 13 April 2023

Interreg CENTRAL EUROPE | Joint Secretariat  
Claudia Pamperl

## Programme Priorities and Specific Objectives





## Specific Objective 1.1

Strengthening  
innovation capacities  
in central Europe

11

FUNDED  
PROJECTS



AdobeStock ©

### SO1.1 Thematic fields

GREEN ECONOMY, BIOECONOMY

✓ Call 1 projects

CULTURAL AND CREATIVE INDUSTRIES AND TOURISM

✓ Call 1 projects

SILVER ECONOMY

TECHNOLOGY AND INNOVATION TRANSFER TO SMES

✓ Call 1 projects

INNOVATIVE SCHEMES FOR FINANCING INNOVATION

✓ Call 1 projects

INDUSTRY 4.0, ROBOTISATION, MECHATRONICS,  
DIGITAL TECHNOLOGIES, KEY ENABLING  
TECHNOLOGIES

✓ Call 1 projects

INNOVATION IN HEALTH (CARE)

SOCIAL INNOVATION

✓ Call 1 projects

INTERREGIONAL PARTNERSHIPS ALONG VALUE CHAINS

## Specific Objective 1.2

Strengthening skills for smart specialisation, industrial transition and entrepreneurship in central Europe



3

FUNDED PROJECTS

AdobeStock ©

## SO1.2 thematic fields

✓ Call 1 projects

SKILLS FOR SECTORS OF RELEVANCE FOR SMART SPECIALISATION, E.G. INDUSTRY 4.0, DIGITALISATION, GREEN ECONOMY, BIO-ECONOMY, SILVER ECONOMY, HEALTH AND LIFE SCIENCES, CULTURAL AND CREATIVE INDUSTRIES, SUSTAINABLE TOURISM

MATCHING SKILLS TO LABOUR MARKET NEEDS OF REGIONS IN INDUSTRIAL AND DIGITAL TRANSITION

✓ Call 1 projects

CAPACITY-BUILDING AND INSTITUTIONAL LEARNING FOR SMART SPECIALISATION

COMPETENCES FOR INNOVATION MANAGEMENT IN SMES AND ENTREPRENEURSHIP, INCLUDING SOCIAL ENTREPRENEURSHIP

COUNTERACTING REGIONAL (URBAN-RURAL) DISPARITIES OF HUMAN CAPITAL AND BRAIN DRAIN

## Specific Objective 2.1

Supporting the energy transition to a climate-neutral central Europe

6

FUNDED PROJECTS

Canva ©

## SO2.1 thematic fields

SMART INTEGRATION OF CARBON-NEUTRAL SOLUTIONS ACROSS SECTORS

✓ Call 1 projects

RENEWABLE ENERGY SOURCES

✓ Call 1 projects

ENERGY EFFICIENCY OF BUILDINGS AND PUBLIC INFRASTRUCTURES

✓ Call 1 projects

REDUCTION OF GREENHOUSE GAS EMISSIONS FROM INDUSTRY AND OTHER SECTORS

ENERGY PLANNING AT LOCAL AND REGIONAL LEVELS

✓ Call 1 projects

ENERGY DEMAND MANAGEMENT AND BEHAVIOURAL CHANGE

✓ Call 1 projects

FINANCING SCHEMES FOR ENERGY EFFICIENCY AND RENEWABLE ENERGY INVESTMENTS

ENERGY POVERTY

## Specific Objective 2.2

Increasing the resilience to climate change risks in central Europe



6

FUNDED PROJECTS

Canva ©

## SO2.2 thematic fields

✓ Call 1 projects

CLIMATE CHANGE RESILIENCE AND ADAPTATION MEASURES

✓ Call 1 projects

CLIMATE-PROOF LANDSCAPE AND URBAN PLANNING

✓ Call 1 projects

RESILIENCE TO WEATHER EXTREMES AND RELATED HAZARDS (RAINFALL EVENTS, FLOODS, LANDSLIDES, HEAT, DRAUGHTS, WATER SCARCITY, WILDFIRES ETC.)

✓ Call 1 projects

RISK AWARENESS, PREVENTION AND MANAGEMENT

✓ Call 1 projects

SOCIO-ECONOMIC AND HEALTH-RELATED IMPACTS OF CLIMATE CHANGE

## Specific Objective 2.3

Taking circular economy forward in central Europe



9  
FUNDED PROJECTS

## SO2.3 thematic fields

WASTE PREVENTION AND MANAGEMENT,  
RECYCLING AND RECOVERY OF RESOURCES AND  
RAW MATERIALS

✓ Call 1 projects

CIRCULAR ECONOMY VALUE CHAINS

SUSTAINABLE PRODUCT DESIGN  
(E.G. ECO-DESIGN) AND PRODUCT  
DEVELOPMENT PROCESSES

REPAIR AND RE-USE

✓ Call 1 projects

CLEAN PRODUCTION PROCESSES AND  
CLOSED LOOP SYSTEMS

✓ Call 1 projects

BEHAVIOURAL CHANGES OF PRODUCERS,  
CONSUMERS, PUBLIC BUYERS ETC.

✓ Call 1 projects

## Specific Objective 2.4

Safeguarding the environment in central Europe

5

FUNDED PROJECTS



AdobeStock ©

## SO2.4 thematic fields

✓ Call 1 projects

BIODIVERSITY CONSERVATION AND RECOVERY INCLUDING URBAN GREEN SPACES

✓ Call 1 projects

PROTECTION OF NATURAL HERITAGE, ECOSYSTEMS AND VALUABLE AREAS INCLUDING NATURA 2000 SITES

REDUCTION OF ENVIRONMENTAL POLLUTION (AIR, WATER, SOIL, NOISE, LIGHT ETC.) AND THEIR HUMAN HEALTH IMPACTS

INTEGRATED ENVIRONMENTAL MANAGEMENT AND SUSTAINABLE USE OF NATURAL RESOURCES

✓ Call 1 projects

SUSTAINABLE LAND MANAGEMENT AND LANDSCAPE PLANNING

✓ Call 1 projects

ECOSYSTEM SERVICES (E.G. PRODUCTION OF FOOD AND WATER, CLEAN AIR, RECREATIONAL BENEFITS)

✓ Call 1 projects

SUSTAINABLE TOURISM AND THE VALORISATION OF NATURAL HERITAGE

RESTORATION OF DEGRADED ECOSYSTEMS

## Specific Objective 2.5

### Greening urban mobility in central Europe

3

FUNDED  
PROJECTS

AdobeStock ©

## SO2.5 thematic fields

✓ Call 1 projects

SUSTAINABLE URBAN MOBILITY PLANNING

QUALITY AND EFFICIENCY OF GREEN, URBAN  
PUBLIC TRANSPORT SERVICES

SMART TRAFFIC AND MOBILITY MANAGEMENT  
INCLUDING COMMUTING SOLUTIONS

SUSTAINABLE MULTIMODAL CONNECTIONS  
BETWEEN URBAN AND PERI-URBAN AREAS

✓ Call 1 projects

SUSTAINABLE MULTIMODAL URBAN FREIGHT  
AND LOGISTIC SOLUTIONS  
(INCLUDING THE “LAST MILE”)

REDUCTION OF GREENHOUSE GASES  
AND OTHER AIR POLLUTANTS FROM  
URBAN TRANSPORT

ACCESSIBILITY OF URBAN PUBLIC TRANSPORT  
FOR EVERYONE, ESPECIALLY FOR ELDERLY  
AND FRAIL PEOPLE

## Specific Objective 3.1

Improving transport connections of rural and peripheral regions in central Europe

4

FUNDED PROJECTS



## S03.1 thematic fields

✓ Call 1 projects

DEMAND-RESPONSIVE AND FLEXIBLE REGIONAL PASSENGER TRANSPORT

✓ Call 1 projects

ACCESSIBILITY OF RURAL AND REMOTE AREAS AND THEIR CONNECTIVITY TO MAIN EU TRANSPORT CORRIDORS

REMOVAL OF TRANSPORT BARRIERS AND BOTTLENECKS ACROSS BORDERS AND BEYOND

STRATEGIC REGIONAL TRANSPORT AND SPATIAL PLANNING

✓ Call 1 projects

MULTI-MODAL FREIGHT TRANSPORT AND LOGISTIC CHAINS IN RURAL AND PERIPHERAL AREAS AND CONNECTIONS TO TRANSPORT NODES



## Specific Objective 4.1

Strengthening  
governance for  
integrated territorial  
development  
in central Europe

6

FUNDED  
PROJECTS

Canva ©

## SO4.1 thematic fields:

✓ Call 1 projects

REDUCTION OF ADMINISTRATIVE BARRIERS,  
BETTER POLICY MAKING  
AND COOPERATION BEYOND BORDERS

✓ Call 1 projects

MULTI-LEVEL & MULTI-SECTOR GOVERNANCE  
AMONG AREAS WITH FUNCTIONAL TIES BEYOND  
BORDERS

DIGITAL GOVERNANCE

✓ Call 1 projects

PARTICIPATORY DECISION-MAKING  
PROCESSES (E.G. CITIZEN INVOLVEMENT)

✓ Call 1 projects

INTEGRATED TERRITORIAL DEVELOPMENT  
STRATEGIES, E.G. ADDRESSING DEMOGRAPHIC  
CHANGE, PUBLIC SERVICES OF GENERAL  
INTEREST (SUCH AS HEALTH, EDUCATION,  
SOCIAL SERVICES) AND TOURISM AND CULTURE

## HOW CAN YOU LEARN MORE?

- Watch our thematic tutorials on our YouTube channel

<https://www.interreg-central.eu/support-for-applicants/#explainers-and-tutorials>



- Get familiar with funded projects

[www.interreg-central.eu/project-gateway](http://www.interreg-central.eu/project-gateway)

### Project gateway

Get to know the 53 projects that we fund so far. More information on their activities will follow soon.



35

## Outcomes of the First Call



# 53

Interreg CENTRAL EUROPE cooperation projects support the development of a smarter, greener, better connected and more integrated central Europe after the first call



Find out more about our projects: [www.interreg-central.eu/project-gateway](http://www.interreg-central.eu/project-gateway)

## COUNTRIES & PARTNERS

AUSTRIA	60
CROATIA	53
CZECHIA	50
GERMANY	58
HUNGARY	62
ITALY	88
POLAND	66
SLOVAKIA	36
SLOVENIA	80



# 120

Total budget of all first call projects

million €

# 80%

ERDF co-financing

# 560

Partners

# 192

Pilots

# 216

Strategies

# 204

Solutions

**Interreg**  
CENTRAL EUROPE



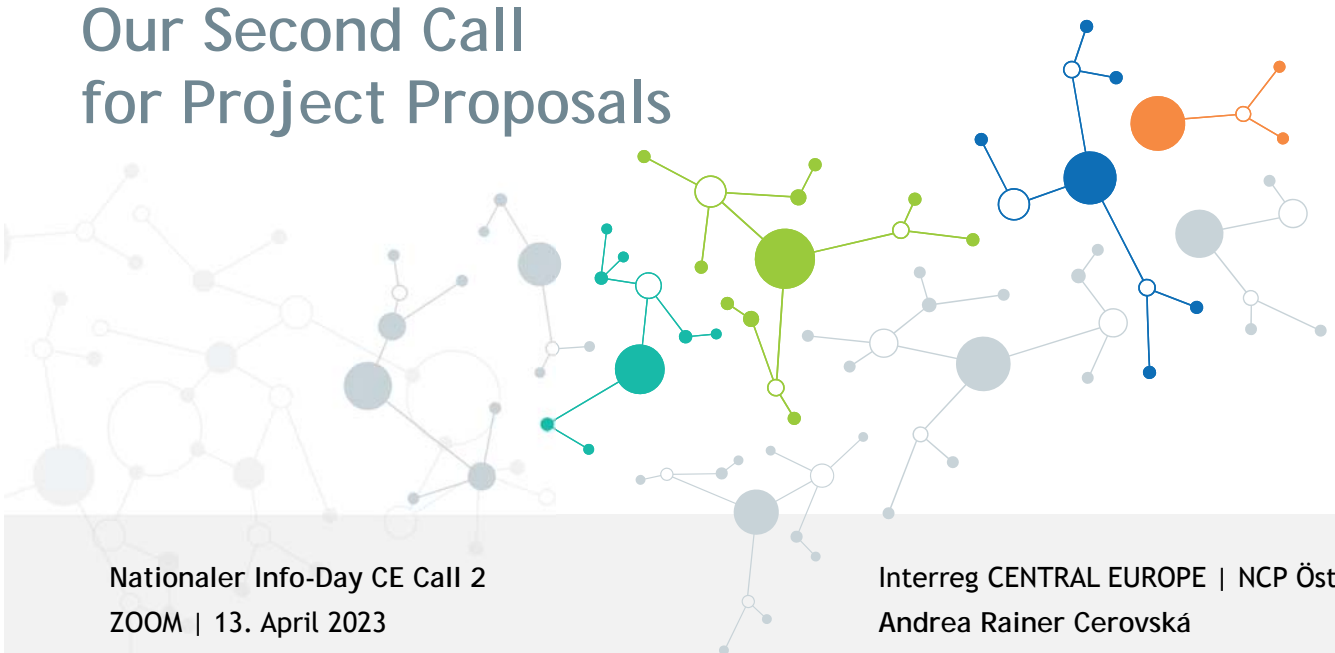
Co-funded by  
the European Union

**Interreg**  
CENTRAL EUROPE



Co-funded by  
the European Union

## Our Second Call for Project Proposals



Nationaler Info-Day CE Call 2  
ZOOM | 13. April 2023

Interreg CENTRAL EUROPE | NCP Österreich  
Andrea Rainer Cerovská

# Call Timeline



# Cooperation Basics

**Can you get funded?**

We have created a self-assessment test for you to find out.

Our funding is for many but not for everyone. You will have to meet certain criteria if you want to get your idea co-financed by us. With this test you can quickly find out if your organisation is eligible and whether the topic of your idea fits our priorities and minimum requirements.

Do you tick all the boxes?

[Take the test](#)

[www.interreg-central.eu/can-you-get-funded](http://www.interreg-central.eu/can-you-get-funded)

# Eligible partners

- Public authorities
- Private bodies (including companies) with legal personality
- International organisations under the national law of any EU Member State
- International organisations under international law (with restrictions)

## Eligible lead partners

Minimum requirements on financial capacity

# Call Basics



## THEMATIC SCOPE

The call is open for proposals in all 4 funding priorities and 9 specific objectives of the programme



## TRANSNATIONALITY

Project partnerships have to be made up of a minimum of 3 partners from 3 countries (of which two have to be in the programme area)

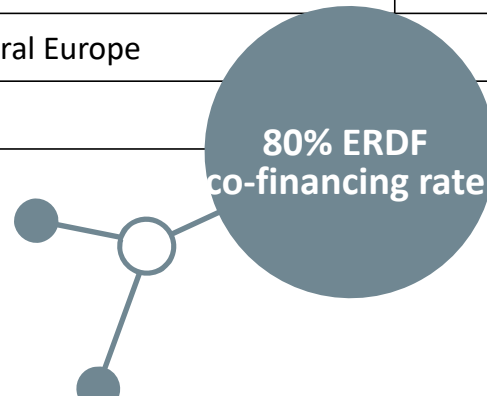


## PROCEDURE

The call applies a one-step procedure, in which applications have to be fully submitted through Jems before the closure on 17 May.

# Call Budget

Priority	Indicative ERDF Allocation (m EUR)
1. Cooperating for a smarter central Europe	18
2. Cooperating for a greener central Europe	30
3. Cooperating for a better-connected central Europe	6
4. Improving governance for cooperation in central Europe	6
<b>Total</b>	<b>60</b>



## Recommended Project Features



**PARTNERSHIP**  
From 5-12 partners



**BUDGET**  
From 1,2 million to 1,9 million EUR ERDF



**DURATION**  
Up to 30 months

# What to Read



## Interreg Programme (IP)

- Challenges and needs
- Vision and mission
- Topics, actions and expected results
- Target groups and territories

## Programme Manual

- Rules and procedures
- Requirements
- Key information
- Guidance
- Key documents

## Application package

- Project features (call-specific)
- Call budget
- Project selection details
- Templates
- Deadline

45

# Application form offline template



## APPLICATION FORM OFFLINE TEMPLATE

Second Call for Proposals



Version 1  
March 2023

- PDF file contains detailed guidance on how to fill-in the application form
- Editable Word file allows you working also offline

## Attention!

- There are some (minor) differences between this template and Jems
- “Compulsory” vs “recommended” text size
- It cannot be submitted (submission only through Jems)

46

# Documents to submit

LP & each PP

+

Private LP

## LP and PP declarations

To be filled in and signed by the lead applicant and each partner

## Simplified Financial Statement

Data of the last 2 financial years

+

- Balance sheets and profit & loss accounts of last 2 financial years
- Audit report of last financial year OR
- Reference letter from the bank

# How We Assess Proposals

CRITERIA		SUB-CRITERIA
STRATEGIC	Relevance	Intervention logic and transnationality
		Policy and territorial relevance, horizontal principles
		Innovativeness and synergies
	Partnership	Partnership composition and competences
Transnational cooperation approach		
OPERATIONAL	Implementation	Methodology and work plan
		Budget



# How You Can Assess Your Proposal

## Self-assess your project proposal

Answer the questions below and find out in what shape your project proposal is.

[www.interreg-central.eu/self-assessment-tool](http://www.interreg-central.eu/self-assessment-tool)

49

# How We Select Projects



- Carried out only on certain parts of the application form
- Only certain strategic criteria are applied

- Carried out on the whole application form
- The full set of strategic & operational criteria are applied

50

# What changed in call 2 compared to call 1?

Topic	Call 1	Call 2
Timeline	Call open for 100 days	Call open for 56 days
Budget	99,5 mEUR ERDF	60 mEUR ERDF
Recommended project features	5 to 12 partners; 1,2 to 2,4 mEUR ERDF; up to 36 months	5 to 12 partners; 1,2 to 1,9 mEUR ERDF; up to 30 months
Assessment sub-criteria	Budget as part of the methodology & work plan sub-criterion	Budget is a separate implementation sub-criterion
Relevance filter	Carried out on the whole AF	Carried out on some parts of the AF



Joint Secretariat  
Interreg CENTRAL EUROPE Programme  
Vienna, Austria



[www.interreg-central.eu](http://www.interreg-central.eu)



[info@interreg-central.eu](mailto:info@interreg-central.eu)



+43 1 8908088-2403



[facebook.com/InterregCE](https://facebook.com/InterregCE)



[Twitter.com/InterregCE](https://Twitter.com/InterregCE)



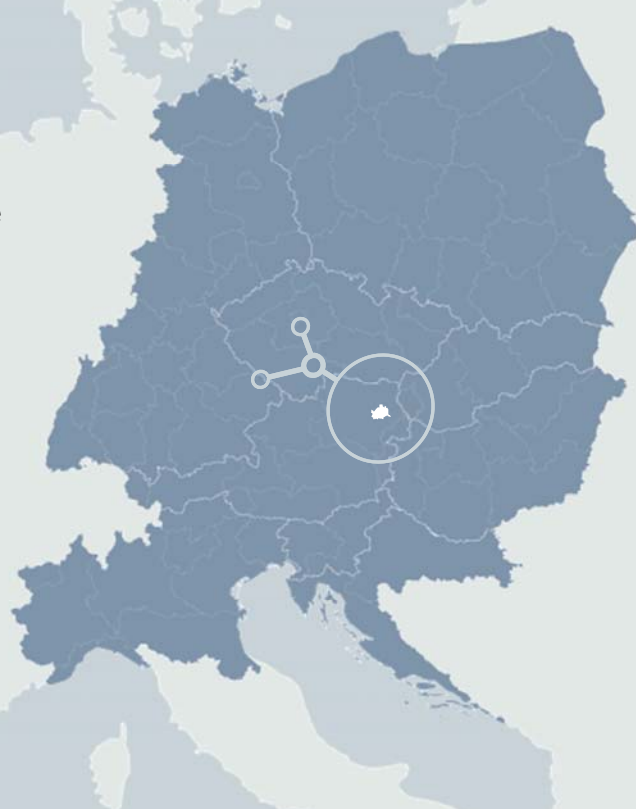
[Linkedin.com/in/interregce](https://Linkedin.com/in/interregce)



[Youtube.com/c/interregcentraleurope](https://Youtube.com/c/interregcentraleurope)



[Instagram.com/interregce](https://Instagram.com/interregce)





## Fragen & Antworten SLI.DO

### Interreg Central Europe – Eine Projektgeschichte aus Österreich: DigiCare4CE

Sandra Dohr, Geriatriische Gesundheitszentren der Stadt Graz – Albert Schweitzer Institut für Geriatrie und Gerontologie

# Digital transformation of long-term care facilities for older people



Nationaler Info-Day  
zum 2. Call Interreg Central Europe Programme  
13.04.2023

Geriatrische Gesundheitszentren der Stadt Graz  
Sandra Dohr, BA MA

## ÜBERSICHT

Projekt-  
vorstellung



Zeitverlauf  
Einreichung



Förderliche  
Faktoren



Hinderliche  
Faktoren



Fazit &  
Empfehlungen





Smarter  
CE

DigiCare4CE

Interreg  
CENTRAL EUROPE



Co-funded by  
the European Union

## DigiCare4CE - Ausgangslage

DigiCare4CE

- Demografischer Wandel & Alterung der Gesellschaft
- Pflegebedürftigkeit steigt - Pflege älterer Menschen wird zu einer Herausforderung
- Mangel an qualifizierten Pflegekräften
- Digitale Lösungen bieten Pflegepersonal Unterstützung, aber Potenzial der Digitalisierung wird noch zu wenig genutzt



# DigiCare4CE - Projektvorhaben

DigiCare4CE

DigiCare4CE fördert innovative Lösungen zur Verbesserung der Pflegequalität:

Entwicklung einer transnationalen Strategie für digitale Transformation von Pflegeeinrichtungen

Testen des Einsatzes neuer Technologien in Pilotaktionen

Erarbeitung von Aktionspläne für breitere Umsetzung



## DigiCare4CE auf einen Blick



Priorität 1: *Cooperating for a smarter central Europe*

Dauer: 03.2023 - 02.2026

# LÄNDER & REGIONEN

## Projektpartner

1. Deggendorf Institute of Technology (GER)
2. Geriatric Health Care Centers of the City of Graz (AT)
3. Institute for Older Care and Sheltered Homes (IT)
4. Association of Social Services Providers Czech Republic (CZ)
5. Technical University of Kosice (SK)
6. Anton Trstenjak Institute of Gerontology and Intergenerational Relations (SI)
7. Czech Institute of Informatics, Robotics and Cybernetics of the Technical University in Prague (CZ)
8. Health Agency of Lower Austria (AT)
9. European Grouping of Territorial Cooperation Via Carpatia (SK)
10. Rzeszow Regional Development Agency (PL)



## ZEITVERLAUF - EINREICHUNG



**November 2021**  
Launch 1. Call Interreg  
Central Europe Programme

**2019 - 2022**



Interreg CE “I-CARE-SMART”  
Dissemination - neue Einreichung  
geplant

**Dezember 2021**

Vorbereitungsworkshop mit  
Projektmanagement-Agentur  
Partner waren z.T. bekannt





## Jänner 2022

Launch Jems - online Antragstellung,  
Koordinationsmeetings



## Februar 2022

Partnership declaration  
Finale Einreichung "DigiCare4CE"  
Antragsfrist: 23.02.2022

## August 2022

Formblatt für österreichische Projektpartner



## Jänner - März 2023

Anpassungen (Budgetkürzung & -verteilung,  
Konkretisierung der AP)  
Offizieller Projektstart: 01.03.2023

## Dezember 2022

Projektzusage



## April 2023

Partnership Agreement  
Kick-off Veranstaltung, PR  
Start der inhaltlichen Projektarbeit

**Interreg**  
CENTRAL EUROPE



Co-funded by  
the European Union

DigiCare4CE





# LESSONS LEARNED - 01

## Förderliche Faktoren bei der Einreichung

- Antragstellung mit bereits bestehendem Konsortium/Projektpartnern (Projektdissemination)
- Vernetzung & Zusammenarbeit mit denselben Organisationen in unterschiedlichen Projekten
- Projekt Lead:
  - Straffes Projektmanagement & inhaltliche Leitung bündeln
  - Leadership
- Agentur für Projektmanagement beauftragen
- Problem- und Fragestellungen sowie Aufgaben eingrenzen & klar definieren
  - Antrag als roter Faden und Grundlage für das Projekt

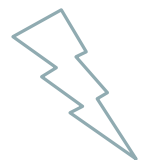


65

# LESSONS LEARNED - 02

## Hinderliche Faktoren bei der Einreichung

- Unstrukturierte Zusammenarbeit - unklare Rollendefinition, kein Leadership
  - *Wer übernimmt Projekt Lead?*
  - *Wer sind Partner?*
  - *Wer ist für das Projektmanagement zuständig?*
  - *Wie wird zusammengearbeitet?*
- Mangelnde Eingrenzung des Themenbereichs & der Arbeitspakete
- Mitarbeiter:innen-Fluktuation: Mitglieder (Personen) bei Projektpartnern wechseln
- Bei Budgetkürzungen wenig Interventionsmöglichkeiten



66

# FAZIT

## Tipps für die Einreichung



- Bereits bestehende Kooperationen & Netzwerke aus Projekten nutzen
- Projektmanagement Agentur (u.a. für Einreichung) beauftragen
- Genug Vorlaufzeit einplanen
- Klare Definition der Rollen - Projekt Lead, Projektpartner
- Vorbereitungsmeetings geben bereits erste Anzeichen für weitere Projektzusammenarbeit
- Mögliche Budgetkürzungen einplanen aufgrund geringer Interventionsmöglichkeiten nach Projektzusage



DigiCare4CE  
[interreg-central.eu/projects/digicare4ce/](https://interreg-central.eu/projects/digicare4ce/)



[www.ggz.graz.at](http://www.ggz.graz.at)



[sandra.dohr@stadt.graz.at](mailto:sandra.dohr@stadt.graz.at)



+43 316 7060 1061



[Linkedin.com/company/geriatriche-gesundheitszentren-der-stadt-graz](https://www.linkedin.com/company/geriatriche-gesundheitszentren-der-stadt-graz/)



[Instagram.com/geriatrichesgesundheitszentren](https://www.instagram.com/geriatrichesgesundheitszentren)



## Interreg Central Europe – Projekt- und Finanzmanagement (inkl. Förderfähigkeitsregeln)

Claudia Pamperl, Interreg Central Europe Joint Secretariat

Andrea Rainer Cerovská, ÖROK-Gst./NCP



# Financial aspects in Interreg CE 2021-27

# HIERARCHY OF RULES

## Hierarchy of ELIGIBILITY Rules

1. EU Rules as set out in the Regulations (CPR; ERDF and Interreg)

2. Programme Rules as set out in the programme manual

3. National/institutional rules **BUT ONLY** for matters not covered by eligibility rules set in the EU and programme rules

- This hierarchy is **ONLY** for eligibility of expenditure. All other applicable EU and national rules are on a higher hierarchical level than rules set by the Interreg CE Programme

71

# GENERAL FRAMEWORK

	Interreg CE 14-20	Interreg CE 21-27
<b>General</b>		
ERDF Co-financing rate	80% (AT; DE; IT) 85% (CZ; HR; HU; PL; SI; SK)	80% for all beneficiaries
<b>Application</b>		
Preparation & Contracting Lump Sum	Max € 15.000 (Total)	€ 17.500 (Total) € 14.000 (ERDF)
Work Packages in Application Form (AF)	All WPs in AF (WP M, WP T, WP C, WPI)	No WP Management, WP Communication, WP Investment
Threshold for investment description in AF	€ 15.000 (BL5 & BL6) Specific WP for Investment	€ 25.000 (CC5 & CC6) No specific WP for Investment
Budget in AF	Per Partner/BL/WP/Period	Per Partner/Cost category/Period

72

# GENERAL ELIGIBILITY

	Interreg CE 14-20	Interreg CE 21-27
<b>Eligibility</b>		
Value added tax (VAT)	Recoverable VAT not eligible	Recoverable VAT eligible if project budget is less than € 5 million
Gifts	Eligible if cost per gift does not exceed € 50. Max. € 500 for gifts at project level	Gifts are NOT eligible
Programme procurement rule	Programme threshold - € 5.000 (excl. VAT) Private PPs had to follow procurement procedures similar to applicable EU/national rules	Threshold is now € 10.000 (excl. VAT) For private PPs only market research required (unless stricter national rules apply)
PPs from outside CE area	PP budget - maximum 20% of project ERDF	No limitation (however only allowed in duly justified cases)

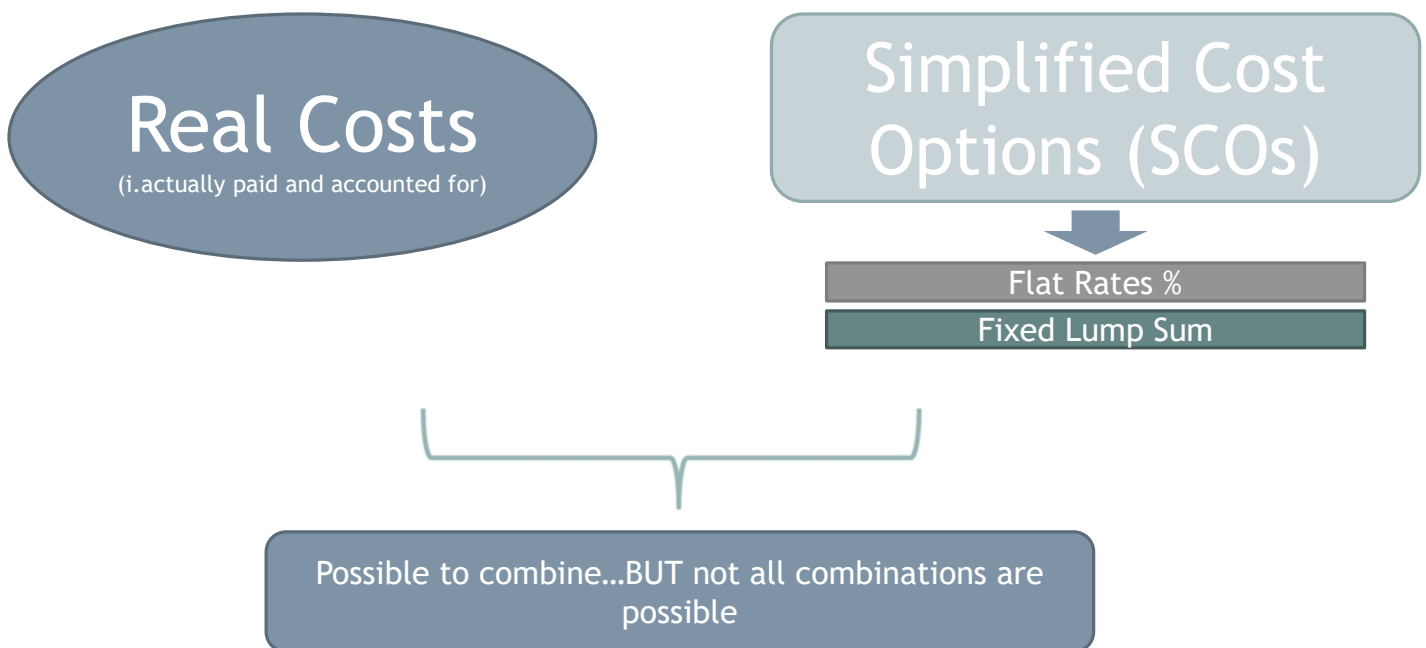
# COST CATEGORIES (1)

	Definition	Forms of reimbursement
<b>Cost Categories</b>		
Staff Costs (CC1)	Salary payments Other costs linked to salary payments	<ul style="list-style-type: none"> <li>Real costs (full-time; part-time in the project - fixed % of time per month)</li> <li>Flat rate (20 % if direct costs other than staff costs)</li> </ul>
Office and administrative costs (CC2)	Office rent, insurance/taxes, office supplies, accounting, maintenance, IT systems, bank charges, ..exhaustive list!	<ul style="list-style-type: none"> <li>Flat rate of 15 % of eligible staff costs</li> </ul>
Travel and accomm. costs (CC3)	Travel tickets, costs of meals, accommodation costs, visa costs	<ul style="list-style-type: none"> <li>Flat rate (country specific: between 5 and 11 %), Austria: 5 %</li> </ul>
External expertise and services costs (CC4)	Studies, survey, training, translations, publicity, financial management, ..	<ul style="list-style-type: none"> <li>Real costs</li> </ul>
Equipment costs (CC5)	Office equipment, IT hard-/software, lab. equipment, tools, .. exhaustive list!	<ul style="list-style-type: none"> <li>Real costs</li> </ul>
Infrastructure and works (CC6)	Building permits, building material, labour, specialised interventions	<ul style="list-style-type: none"> <li>Real costs</li> </ul>

# COST CATEGORIES (2)

	Interreg CE 14-20	Interreg CE 21-27
SCOs and Cost Categories		
Terminology	Budget Lines (BLs)	Cost categories (CCs)
Staff Costs	For staff working part-time in the project - 3 possible calculation options: fixed % of time per month; Flexible no. of hours per month (1.720 calculation method); hourly rate as per contract	For staff working part-time in the project - ONLY 1 option i.e. fixed % of time per month
Travel and accommodation costs	Real costs	Flat rate (country specific) Austria: 5 %
Equipment costs	Distinction between office equipment and thematic equipment	No distinction
Infrastructure and works	Not specifically foreseen as a budget line in the regulations therefore a programme-specific BL was set up	Foreseen as a separate cost category including a definition (coming from regulation) of what constitutes this category
Direct costs calculated as 40% of staff costs	N/A	New possibility

# REIMBURSEMENT OPTIONS IN INTERREG CE 2021-2027



# SIMPLIFIED COST OPTIONS IN INTERREG CE

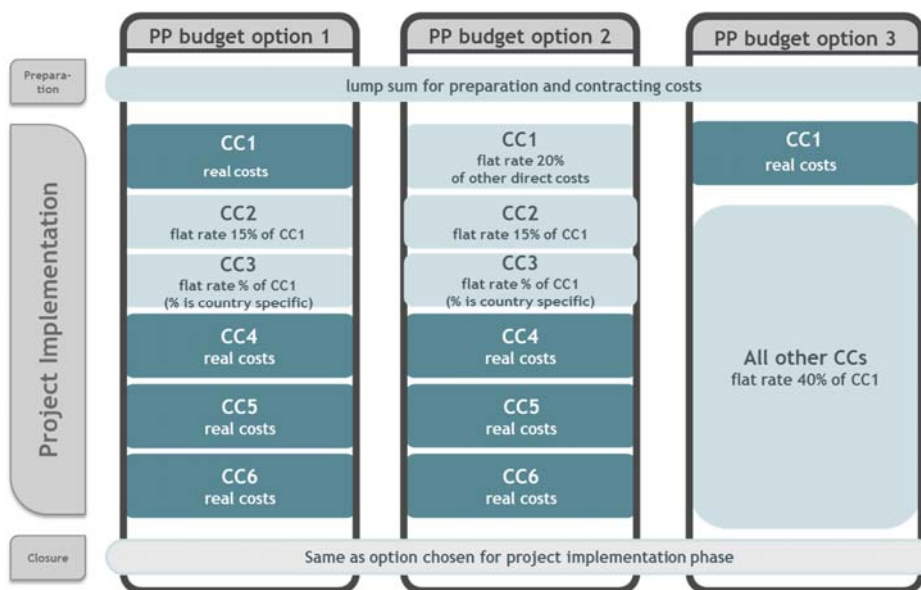
## Lump sum for preparation and contracting

- ✓ Also applied in CE14-20 - Amount increased from € 15.000 to € 17.500 total cost (€14.000 ERDF)
- ✓ Has to be included in AF (Part E) for the amount to be eventually paid

## Flat rates

Cost Category (CC)	Features
Staff costs (CC1)	<ul style="list-style-type: none"> <li>➤ 20% of the direct costs other than the direct staff costs - i.e. External expertise and services (CC4); Equipment (CC5) and Infrastructure and works (CC6)</li> <li>➤ Not mandatory. To be decided at Partner level when drafting the AF</li> <li>➤ Also applied in CE14-20</li> </ul>
Office & administrative costs (CC2)	<ul style="list-style-type: none"> <li>➤ 15% of eligible staff costs</li> <li>➤ Mandatory</li> <li>➤ Also applied in CE14-20</li> </ul>
Travel & accommodation costs (CC3)	<ul style="list-style-type: none"> <li>➤ ___% of eligible staff costs (% depending on country; 5 % for AUSTRIA)</li> <li>➤ Mandatory</li> <li>➤ New</li> </ul>
Direct costs other than Staff Costs (i.e. CC2-6)	<ul style="list-style-type: none"> <li>➤ 40 % of eligible direct staff costs</li> <li>➤ Not mandatory. To be decided at Partner level when drafting the AF</li> </ul>

## Possible combinations at partner level



Options have to be chosen by the PPs in the AF and remain throughout project lifetime. Ineligible expenditure in a CC has an impact on flat rates that have the CC as a basis for the calculation

# FOCUS ON STAFF COSTS (CC1)

## Staff Costs - Definition

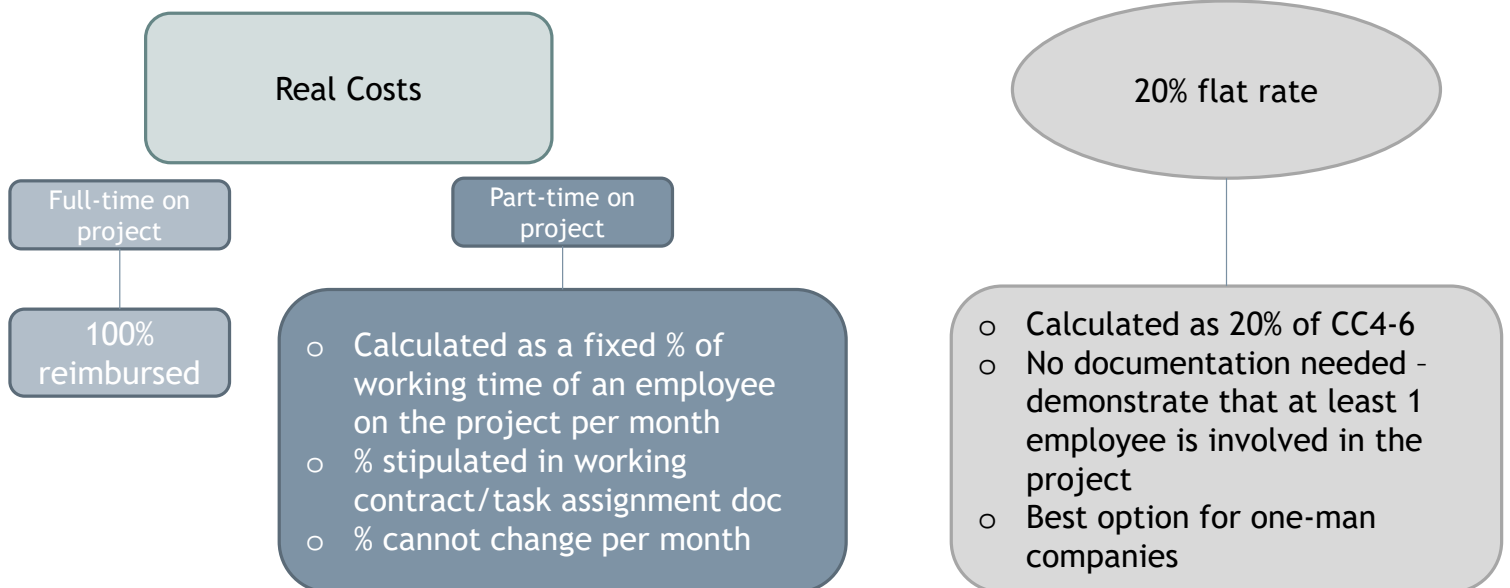
- ✓ Consists of **gross employment costs** of staff employed by the beneficiary for implementing the project
- ✓ Staff can either be **already employed** by the beneficiary or **contracted specifically** for the project
- ✓ Staff may be employed vis-à-vis the project either on a **full-time basis** or on a **part-time basis**

NOTE: Payments to natural persons working for the beneficiary under a contract other than an employment contract may be assimilated to salary payments and such a contract is considered as an employment document. Such costs are eligible under CC1 if all the required conditions are met. Beneficiaries should pre-check with their national controllers.

79

# FOCUS ON STAFF COSTS (CC1)

## Staff Costs - Reimbursement Options



80



# FOCUS ON STAFF COSTS (CC1)

## Staff Costs - Examples of Calculations

### Fixed % per month

- Monthly gross employment costs of the employee working on the project is EUR 5.000,00
- Employee assigned to work 50% of the total working time in the Interreg CENTRAL EUROPE project.

Staff costs to be claimed = Total monthly salary (gross salary) \* Fixed percentage  
Staff costs to be claimed = EUR 5.000,00 \* 50% = EUR 2.500,00

### 20% Flat rate

- In the financial reporting period 1, the beneficiary incurred and reported the following direct costs:

External expertise and services:	EUR 15.500,00
Equipment:	EUR 1.500,00
Total amount:	EUR 17.000,00

Staff costs to be claimed = total direct costs \* 20%  
EUR 17.000,00 \* 20% = EUR 3.400,00

81

# PROCUREMENT RULES

For contracts of works/supplies/services rules on procurement have to be followed



EU  
National  
Programme

The  
stricter rule  
applies



> 10.000 EUR  
< national/EU  
thresholds

Adequate market  
research is required



Procurement  
rules also apply  
to private  
partners

Private partners have to  
follow the programme rule  
i.e. market research for  
contracts above 10.000 EUR  
(with exceptions)

82

## Unterstützungsangebote und nationale Eckpunkte für die Projektentwicklung inkl. österreichisches Prüfsystem 2021-2027

Claudia Pamperl, Interreg CE Joint Secretariat

Andrea Rainer Cerovská, ÖROK-Gst./NCP

Vivian Thurner, Bundesministerium für Land- und Forstwirtschaft, Regionen und Wasserwirtschaft

## How We Support You



### VIDEO TUTORIALS

We have published 9 thematic and 5 technical tutorials in a dedicated playlist on our YouTube channel. Subscribe to get all updates!



### PERSONAL SUPPORT

From 31 March to 10 May we will offer individual consultations on our programme community platform. You can also get in touch with your national contact point at any time.



### ONLINE SUPPORT

We answer your frequently asked questions online. If you cannot find an answer there, you can get in touch with our two helpdesks.

# Individual consultations

- From 31 March to 10 May, we offer consultations with JS experts
- Consultations can be requested and will take place on our Applicant Community

## What to consider before requesting your consultation



Have an advanced project proposal



Assess your idea before asking for a consultation



Request your consultation slot



Prepare for the consultation

# Where to Find Other Applicants and Ideas

Interreg CENTRAL EUROPE Applicant Community

Introduction How to find a partner How to become a partner Contact

Welcome to our applicant matchmaking community!

This community will help you to get in touch with other organisations from across central Europe and facilitate bilateral exchanges in view of the upcoming call for project proposals of Interreg CENTRAL EUROPE that will open on 22 March 2023 in all specific objectives with an indicative budget of 60m EUR.

If you are interested in joining a project idea or in finding partners for your own project idea, this community is the best place to start your cooperation!

Register now

MANAGED BY Interreg CENTRAL EUROPE

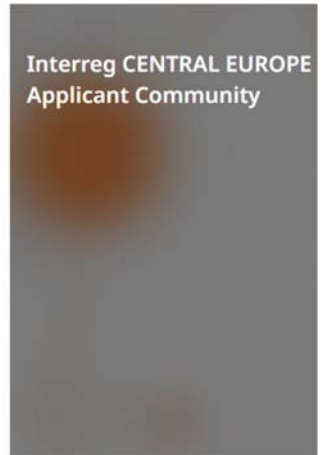
<https://community.interreg-central.eu>

# The applicant community

- Join partnerships  
*(browse project ideas)*
- Look for partners  
*(share your own ideas)*
- Organise meetings  
*(directly with your contacts)*
- Get individual consultation  
*(from JS to lead applicants)*
- Participate to events  
*(organised by the programme)*



How to become a partner    How to find a partner    Contact



**Interreg**  
CENTRAL EUROPE



Co-funded by  
the European Union



**Managing Authority**  
Joint Secretariat



[www.interreg-central.eu](http://www.interreg-central.eu)



[info@interreg-central.eu](mailto:info@interreg-central.eu)



+43 1 8908088-2403



[facebook.com/InterregCE](https://facebook.com/InterregCE)



[twitter.com/InterregCE](https://twitter.com/InterregCE)



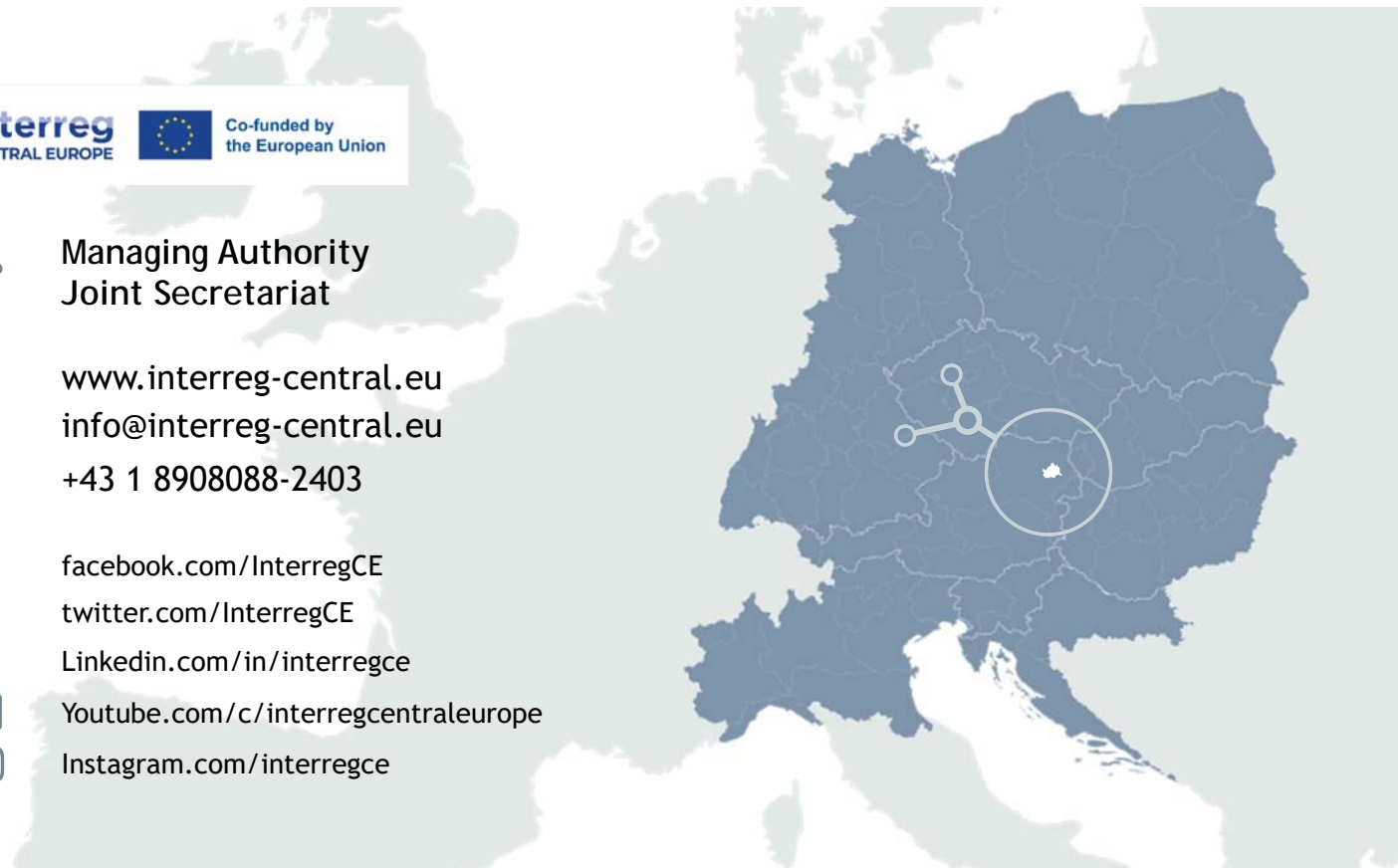
[Linkedin.com/in/interregce](https://Linkedin.com/in/interregce)



[Youtube.com/c/interregcentraleurope](https://Youtube.com/c/interregcentraleurope)



[Instagram.com/interregce](https://Instagram.com/interregce)





## National Contact Point (NCP) Österreich – Kontakt & Informationen

- Nationale Website für transnationale und interregionale INTERREG-Programme: <https://www.oerok.gv.at/kooperationen/>
- NCP Projektdatenbank zu Projekten 2014-2020 und 2000-2013 mit österreichischer Beteiligung: <https://www.projektdatenbank-oerok.at/>
- NCP-Newsletter: aktuelle Infos & Veranstaltungshinweise aus den transnat. & interreg. INTERREG-Programme: <https://www.oerok.gv.at/kooperationen/info-service-oesterreich-ncp/ncp-newsletter>

Martina Bach	Anna Maria Kramann	Andrea Rainer Cerovská
Alpenraumprogramm, EUSALP, URBACT	Danube Transnational / Danube Region, EUSDR, Interreg Europe	Central Europe
Mail: bach@oerok.gv.at Tel: +43 1 53 53 444-22	Mail: kramann@oerok.gv.at Tel: +43 1 53 53 444-21	Mail: cerovska@oerok.gv.at Tel: +43 1 53 53 444-16



## Nationale Evaluierung

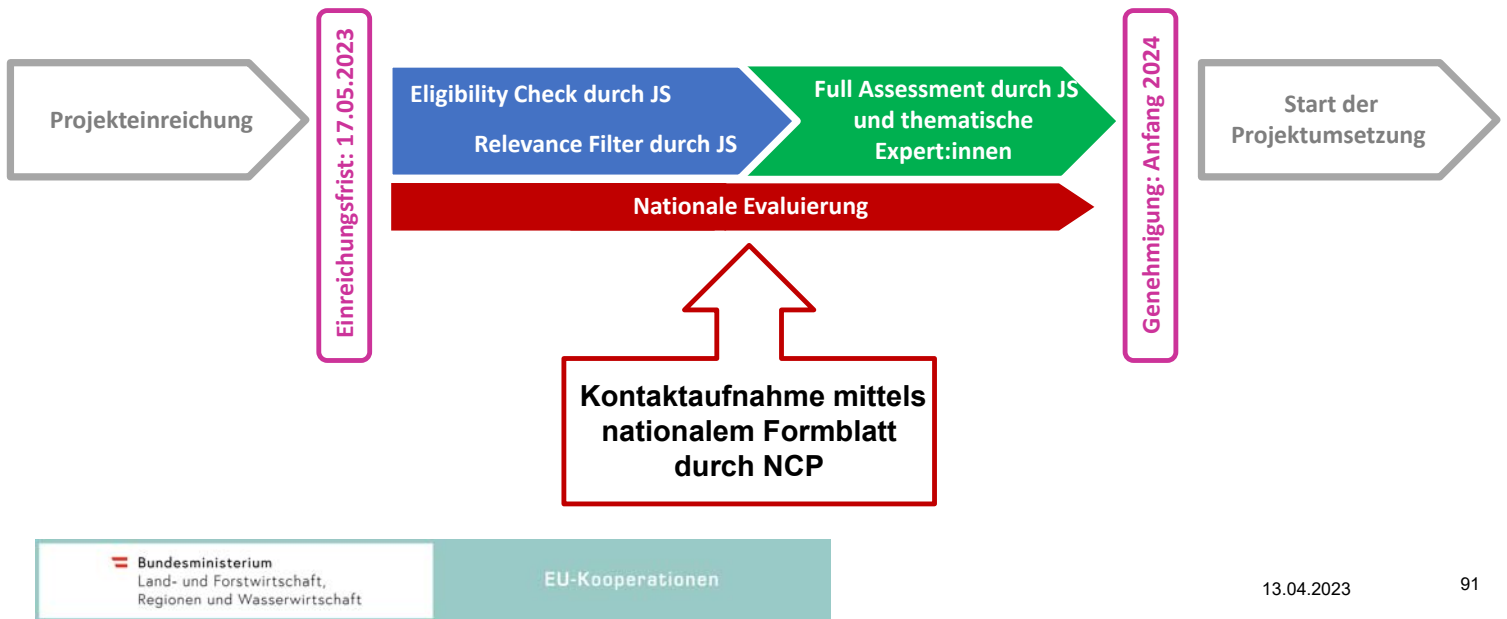
### Abfragen & Überprüfung von nationaler Seite im Rahmen der Projektevaluierung

Folgende Aspekte werden im Rahmen der nationalen Evaluierung nach Projekteinreichung national abgefragt und überprüft:

- **Rechtlicher Status der Projektantragsteller** (Rechtspersönlichkeit, öffentlich/privat)
- **Finanzielle und technische Kapazität** der Projektantragsteller (bei Bedarf)



## Nationale Evaluierung – Zeitpunkt



# Kontrollsystem in Österreich für die Programmperiode 2021-2027

## Rechtliche Grundlage

- gemäß Art. 46 Abs. 3 der Interreg-VO ist in jedem Partnerland eine Prüfstelle als Kontrollinstanz einzurichten
- Vereinbarung nach Art. 15a-B-VG zwischen dem Bund und den Ländern („15a-Vereinbarung“), Art. 7 Abs 1 regelt die Aufgaben der Prüfstelle
- Kontrollsystem in AT ist ein dezentrales System mit 4 operativen Prüfstellen und einer Koordinierenden Prüfstelle im BML
- Ansprechpersonen der Koordinierenden Prüfstelle
  - Vivian Thurner, vivian.thurner@bml.gv.at
  - Irena Hnatkova, irena.hnatkova@bml.gv.at

93

## Prüfstellen in Österreich für die Programmperiode 2021-2027

- im Art. 7 Abs. 3 der 15a-Vereinbarung ist festgelegt, dass das BML einen Dritten (Buchhaltungsagentur des Bundes) mit der Funktion als Prüfstelle beauftragt
- Kosten sind förderfähig (Kostenkategorie: external expertise and services)

### 4 Prüfstellen:

**Buchhaltungsagentur des Bundes** 300,- EUR + 5 % v. Eckkosten ohne USt.

**Prüfstelle Salzburg** 1.000,- EUR + 3 % v. Eckkosten ohne USt.

**Prüfstelle Burgenland** 5 % v. budgetierten und genehmigten Gesamtkosten ohne USt.

**Wirtschaftsagentur Burgenland GmbH** 5 % v. budgetierten und genehmigten

Gesamtkosten zzgl. USt

94

## Zuordnung zu den Prüfstellen Burgenland & Salzburg (gem. Art. 7 der 15a Vereinbarung)

1. Begünstigte im **inhaltlich/ thematischen** Zuständigkeitsbereich oder im Auftrag der Länder Burgenland oder Salzburg
2. alle Vorhaben mit einer **Förderung aus Landesmitteln** von Burgenland oder Salzburg; bei mehreren Bundes- oder Landesförderstellen erfolgt die Zuordnung zu jener Vertragspartei, auf die der größte nationale Förderungsanteil entfällt
3. alle Begünstigten, die mehrheitlich von Burgenland oder Salzburg **finanziert** werden bzw. deren Organe mehrheitlich von einem der beiden Bundesländer beschickt sind
4. alle Begünstigten im **Zuständigkeitsbereich oder im Auftrag** von Städten oder Gemeinden oder alle Begünstigte, deren Vorhaben eine Förderung aus Mitteln von Städten oder Gemeinden erhält, wenn sie in den Bundesländern Burgenland oder Salzburg liegen

95

## Beauftragung der Prüfstelle



- Nach der Projektgenehmigung wird jedem Projektpartner eine Prüfstelle vom BML zugewiesen
- Übermittlung des vorgegebenen Standard Vertrag zur Beauftragung der Prüfstelle inkl. Kontaktdaten mittels NCP
- Beauftragung erfolgt direkt durch den Projektpartner mittels vorgegebenen Standard Vertrag
- Bitte um rasche Kontaktaufnahme und Vertragsübermittlung an die zugewiesene Prüfstelle

96



## Ansprechpersonen / Kontakt

- Hauptansprechpartner für Sie in Österreich bei Fragen zur Projektabwicklung sind der **National Contact Point (NCP)** in Wien
  - Martina Bach, bach@oerok.gv.at
  - Andrea Rainer Cerovska, cerovska@oerok.gv.at
  - Anna Maria Kramann, kramann@oerok.gv.at
- Weiterer Hauptansprechpartner ist der **Lead Partner** des Projektes **bzw.** für den Lead Partner das jeweilige **Gemeinsame Sekretariat**
- Für Prüffragen die Ihnen zugewiesene **Prüfstelle**

97

## Sonstiges

- Alle Dokumente bitte genau durchlesen
- Einhaltung der Fristen
- Anweisungen NCP einhalten
- Haftung für ordnungsgemäße Durchführung
- Beschwerdemöglichkeit mittels Form C - verfügbar ab Q2/2023 (NCP Website)
- **Kein EFRE gefördertes Projekt ohne Prüfung**



=



98

# Danke für Ihre Aufmerksamkeit!

Vivian Thurner, MA  
BML, Abt. III/6  
[Vivian.thurner@bml.gv.at](mailto:Vivian.thurner@bml.gv.at)

 OROK



## Fragen & Antworten SLI.DO



## Resümee

## Kontakte und Informationen

### Interreg Central Europe Joint Secretariat

Kirchberggasse 33-35/11  
1070 Wien

Tel.: +43 1 8908 088 – 2403

Email: [info@interreg-central.eu](mailto:info@interreg-central.eu)

Website: [www.interreg-central.eu](http://www.interreg-central.eu)

### Interreg Central Europe National Contact Point

**Andrea Rainer Cerovská**

ÖROK-Geschäftsstelle  
Fleischmarkt 1  
1010 Wien

Tel.: +43 1 53 53 444-16

Email: [cerovska@oerok.gv.at](mailto:cerovska@oerok.gv.at)

Website:

<https://www.oerok.gv.at/kooperationen/etz-transnational-netzwerke/central-europe-2021-2027>

**ÖSTERREICHISCHE  
RAUMORDNUNGSKONFERENZ  
GESCHÄFTSSTELLE**



Fleischmarkt 1, 1010 Wien  
Tel.: +43 1 53 53 444  
Fax: +43 1 53 53 444-54  
oerok@oerok.gv.at  
[www.oerok.gv.at](http://www.oerok.gv.at)

## **Vielen Dank für Ihre Aufmerksamkeit!**

National Contact Point für transnationale und  
interregionale INTERREG-Programme

<https://www.oerok.gv.at/kooperationen/>

