

PROGRAMME COMPLEMENT

INTERREG IIIA

Austria – Czech Republic

Based on Commission Decision C (2001) 2127 of 12 September 2001
revised by Commission Decision C (2002) 1703 of 27 July 2002, considering the comments of the
Commission D (2002) 310549 of 08 July 2002 and D (2002) 310858 of 24 October 2002,
revised by Commission Decision C (2004) 4523 of 18 November 2004
revised by Commission Decision K (2005) 4972
revised by Commission Decision (2007) D/231053 of 20 August 2007

1	INTRODUCTION	5
2	OVERVIEW OF THE PRIORITIES AND MEASURES	7
3	DETAILED DESCRIPTION OF THE MEASURES	9
4	PROJECT SELECTION: CRITERIA AND PROCEDURES	93
4.1	Project Selection Procedure	94
4.2	Project Selection Criteria	96
4.3	Priority criteria for project selection	101
4.4	Minimum requirements of information on project level	102
5	INFORMATION AND PUBLICITY ACTIVITIES	107
5.1	General	107
5.2	Goals and target groups	108
5.3	Content and strategy	109
5.4	Indicative budget	111
5.5	Competent authority	111
5.6	Evaluation criteria	111
6	DESCRIPTION OF THE AGREEMENT ON DATA EXCHANGE BETWEEN THE EU AND THE MANAGING AUTHORITY/PAYING AUTHORITY	115
7	FINANCING PLAN	119

1 INTRODUCTION

Following the accession of Czech Republic to the European Union on 1st May 2004 the former Interreg IIIA/Phare CBC programme on the external border Austria – Czech Republic has now been converted into a full Interreg IIIA programme on an internal EU border. The Community Initiative Programme (CIP) that has been revised by the decisions of the Commission C (2004) 4523 of 18 November 2004 and K (2005) 4972 of 15 December 2005 forms the basis for the presented amended Programme Complement.

Besides the CIP the following listed documents build the legal frame for the given Programme Complement:

the EU regulations laying down provisions for the Structural Funds, in particular Council Regulations (EC) No. 1257/1999 of 17.5.1999, No. 1260/1999 of 21.6.1999 and No. 1263/1999 of 21.6.1999, Regulations (EC) No. 1783/1999 of the European Parliament and of the Council of 12.7.1999, Commission Regulations (EC) No. 1681/1994 of 11.7.1994, No. 643/2000 of 28.3.2000, No. 1159/2000 of 30.5.2000, No. 438/2001 of 2.3.2001 and No. 2355/2002 of 27.12.2002, No. 448/2004 of 10.3.2004 and Commission Staff Working Paper on “Guidelines on the criteria and modalities for the use of structural funds in electronic communications” SEC(2003)895 of 28 July 2003.

The structure of the document has not been changed.

The main changes in the document are to be found in the following sections:

Chapter 3: the detailed description of the measures has been streamlined to an internal Interreg IIIA programme also indicating that Priority 6 (Special support for Border Regions) does only apply on the Austrian side;

Chapter 4: Project selection has been amended following the recommendations of the mid-term and the on-going programme evaluation

Chapter 5: Communication plan has been up-dated

Chapter 6: Data exchange has been up-dated

Chapter 7: Financial Plan has been amended

All Phare related information has been omitted. But as the Phare CBC Programme will still be in place for some time all relevant regulations remain valid and can be looked up at the former version of the Programme Complement.

Thus the old version of the Programme Complement as well as the JPD still builds the legal basis for the implementation of the Phare CBC Programme Czech Republic - Austria whereas the CIP and this revised version of the Programme Complement is valid for the implementation of the Interreg IIIA Programme Austria – Czech Republic.

By the end of 2003 the Mid-term evaluation has been carried out. The Mid-term evaluation stated that the experience gained so far in implementation did not show shortcomings which would require a change at the level of objectives. And the recommendations of the ex-ante evaluation were either already incorporated in the final versions of the programme documents or they have been taken into account during implementation. Therefore the chapter on the ex-ante evaluation has been omitted from this document too.

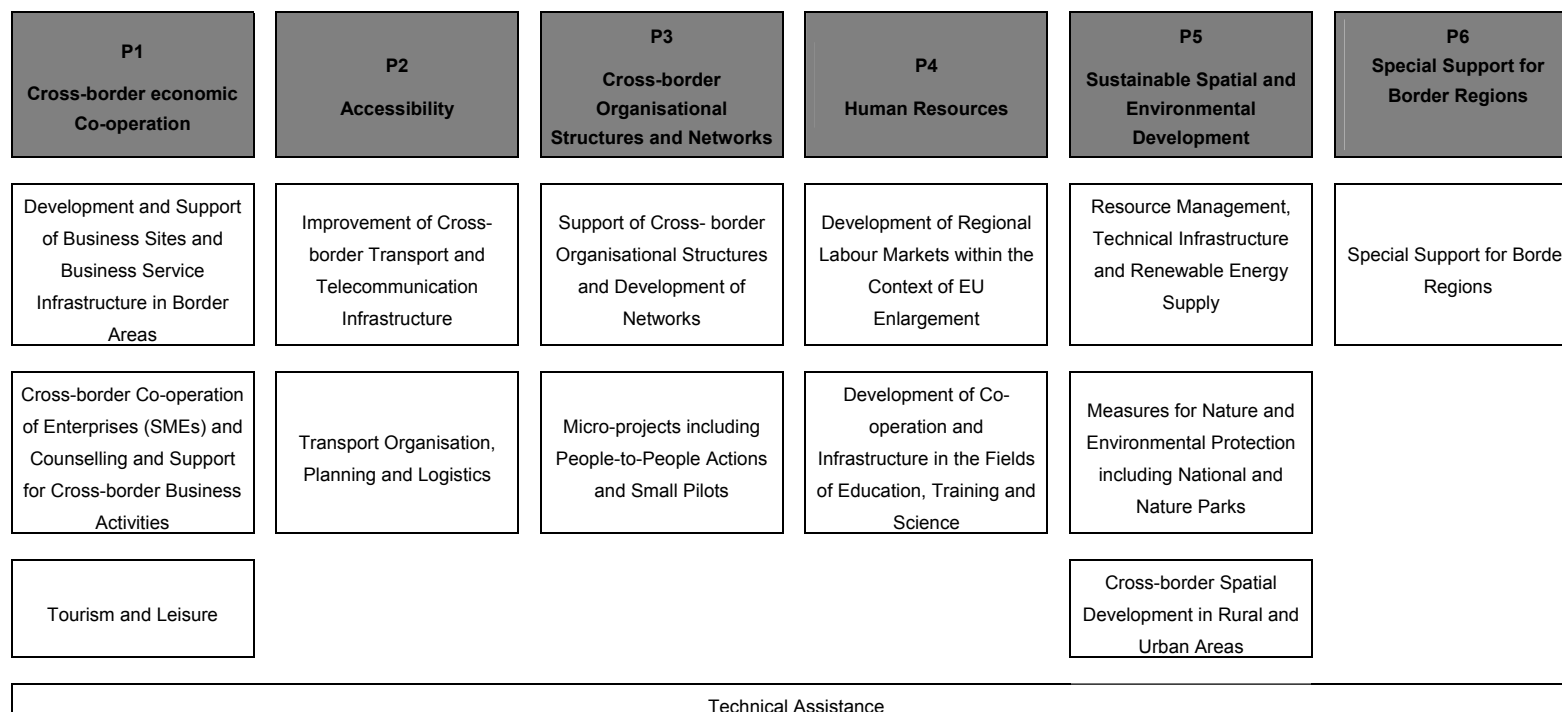
As there are no substantial changes of the SWOT analysis the ex-ante evaluation is still valid that states that “the priorities and measures selected respond to the problems and needs identified in the situation analysis”.

Thus the decision of the programme authorities to maintain the programme’s objectives and structure (priorities, measures) is considered to be still valid and the revised programme complement is in line with the findings of the mid-term evaluation.

2 OVERVIEW OF THE PRIORITIES AND MEASURES

The programme consists of six priority axes comprising a total number of 15 measures. Technical assistance, as seventh priority axes, applies to all six priorities.

Figure 1: Overview of the Programme Structure by Priority



Priority 6 “Special Support for Border Regions” is treated under a separate budget line. The funds for this additional priority have been allocated entirely for the year 2002 and can be spent only at the Austrian side of the border until the end of 2004.

3 DETAILED DESCRIPTION OF THE MEASURES

Priority Axis 1 / Measure 1:

Development and Support of Business Sites and Business Service Infrastructure in Border Areas

1 Contents / Object of the Measure

The rising demand on infrastructure and business services from enterprises and plants looking to locate and expand define the framework conditions for industrial and trade locational development. Existing potentials, experiences and contacts as well as bilateral cooperation agreements with the neighbouring countries and cities are the ideal conditions for starting activities in the area of cross-border economic cooperation.

Special attention is devoted to the promotion of cooperation in science and business in those areas with a forward-looking competence focus of activity with respect to cross-border cooperation. Cities as locations of universities and non-university research facilities play an important role in this context.

These measures are aimed primarily at material projects, and within the scope of Measure 2 mostly immaterial projects are to be promoted. The allocation of complex projects to one or other of the measures is based on the main objective of the planned project.

Relying on the options listed in the JPD projects with the focus in the following areas will be supported:

Establishment, operation and co-operation of cross-border-orientated business innovation and information centres (e.g. competence centres, technology transfer centres, impulse centres, science parks, "Grenzüberschreitende Impulszentren - GIZ" (cross-border impulse centres)); providing business services to SMEs, in particular by means of monetary assistance, strengthening of the capital base and supporting SMEs with cross-border economic activities

Creation of a business-orientated infrastructure for locations near the border

Support of cross-border business settlements and economic development projects

Support of cross-border co-operation projects between science and business to encourage innovative ideas and to commercialise the output of R&D

Dissemination of information of the R&D results

2 Goals

<p>Promotion and improvement of the conditions for business start-ups in the cross-border area, among other things, by improving the access to capital, loans and services for enterprises and by providing capital and services for cross-border economic activities</p> <p>Development of co-operation between national and international partners, in particular between science and business</p> <p>Improvement of the conditions for business settlements and expansions on both sides of the border region</p> <p>Development of (in a broader sense) cross-border economic core competencies (e.g. telecommunication, transport and logistics, environmental and medical technologies, East-West know-how transfer)</p> <p>Expansion of cross-border business services</p> <p>Guiding SMEs to innovation and technology</p> <p>Increasing the competitiveness of enterprises (especially SMEs)</p>

3 Recipients / Beneficiaries

Austria	Czech Republic
<p>Local and regional authorities</p> <p>Associations</p> <p>Natural and legal persons under private and public law and partnerships under civil law</p> <p>NGOs</p>	<p>Municipalities (associations of the municipalities) – Act No.128/2000 Coll., on Municipalities.</p> <p>Towns – Act No. 128/2000 Coll., on Municipalities.</p> <p>Regions – Act No.129/2000 Coll., on Regions.</p> <p>Organizations established by municipalities and regions (and 100% in their ownership) providing public services – necessary statement from the companies register.</p> <p>Non-governmental non-profit organizations (NGOs) – according to the Government Principles for Providing State Budget Funds to the Non-profit Organizations they are defined as:</p> <ul style="list-style-type: none"> • civic associations – acting under Act No.83/1991 Coll., on the Associations of the Citizens • public-benefit organizations – established under Act No.248/1995 Coll., on Public-benefit Organizations • church corporate bodies – established under Act No.3/2002 Coll., on Church and Religious institutions (insofar as they provide health, education and social services or social protection of children) • Interest association of the corporate bodies established under Act No. 40/1964 Coll., Civil Code (as amended) in order to provide service for the regional development in the border regions with Austria. • foundations and endowment funds – established under Act No.227/1997 Coll., on Foundation and Endowment fund <p>Chambers of commerce and agrarian chambers – Act No. 301/1992 Coll., on the Chamber of Commerce and Agrarian Chamber.</p> <p>State established organization</p>

4 Formal Criteria for EU Co-financing

Economic and organisational capacity of the entity responsible for the project

Amount and appropriateness of the costs of the project

Secured financing, appropriateness of the ratio between own funds and public assistance (taking into account the possible EU co-financing according to the programme as well as any other national public funds applied for, already granted or promised)

Relevant project aim in line with sectoral policy objectives (if required, also including statements of other administrative bodies concerned)

Fulfilment of the specific requirements for assistance under INTERREG IIIA – pursuant to the CIP and the Programme Complement (see item no. 5)

Compliance with the criteria for ERDF assistance (pursuant to Council Regulation no. 1783/99) and with the Commission Regulation concerning the eligibility of operations (also Regulation no. 1685/00)

Compliance with other relevant EU regulations (subsidy laws, rules for the awarding of public contracts, environmental law, etc.)

Observance of the condition that any current business of institutions within the framework of their legal mandate or any activities covered by base subsidies cannot be funded under Interreg IIIA.

5 Specific Criteria for the Project Selection

See chapter 3 of the Programme Complement.

6 Eligible Costs

As a general rule:

Project-related material costs and operating expenses

Personnel costs

Planning costs

Project-related investment costs (e.g. construction, infrastructure, development, machinery, hard/software)

Consulting expenses

7 Type and Amount of EU Assistance

Unrecoverable assistance, according to programme 50% at max. for Austria, 75% at max. for Czech Republic

In this connection, it must be observed that the maximum amount of permissible assistance for a specific project according to EU competition law – composed of financial support from EU Structural Funds and national funds – will not be exceeded.

8 Implementation Instruments – Legal Basis

a) Legal basis for the granting of the EU funds

b) Legal basis for the granting of national funds

Austria	Czech Republic
<p>a) Einzelentscheidungen der Bundesländer Niederösterreich, Oberösterreich und Wien</p> <p>b)</p> <ol style="list-style-type: none"> 1. Einzelentscheidungen der Bundesländer Niederösterreich, Oberösterreich und Wien 2. Einzelentscheidungen von Gemeinden in Niederösterreich, Oberösterreich 3. Allgemeine Rahmenrichtlinie für die Gewährung von Förderungen aus Bundesmitteln (BMF.-Z.01 3301/7-II/3/77 vom 5. Mai 1977, geltende Fassung) 4. Einzelentscheidungen des Bundes 5. ERP-Fonds: Richtlinie "ERP-Infrastrukturprogramm" 6. Sonderrichtlinie für regionale Impulsförderung RIF 2000-2006 7. Richtlinien für die Förderungsaktion der NÖ Grenzlandförderungsgesellschaft 8. Eco-Plus-Richtlinien für die regionale Infrastrukturförderung in Niederösterreich (N109/98 Laufzeit bis 31.12.2006) 9. Telematik & C-Tech Wien (Zuschüsse; de minimis) 10. Innovations- und Technologieförderung der Stadt Wien (Zuschüsse; notifiziert FTE) 11. Umwelt- und Technologieförderung der Stadt Wien (Zinszuschüsse, Laufzeit ab 1.3.2001 bis auf Widerruf; de-minimis) 	<p>a)</p> <ul style="list-style-type: none"> - Individual acts of the regions, South Bohemia, South Moravia, Vysočina - individual acts of the municipalities from the regions South Bohemia, South Moravia, Vysočina - Law No. 218/2000 Sb. on budgetary rules and changes of some relevant Acts - Law No. 205/2000 Sb. on budgetary rules of territorial bodies <p>b)</p> <ul style="list-style-type: none"> - Individual acts of the regions, South Bohemia, South Moravia, Vysočina - individual acts of the municipalities from the regions South Bohemia, South Moravia, Vysočina - Law No. 218/2000 Sb. on budgetary rules and changes of some relevant Acts - Law No. 205/2000 Sb. on budgetary rules of territorial bodies

9 Competent Authority / Contact Point for SF Grants

Austria	Czech Republic
<p>Niederösterreich: Amt der Niederösterreichischen Landesregierung, Abt. RU2, Landhausplatz 1, A-3109 St. Pölten</p> <p>Tel: ++(43)(2742)-9005-14329</p> <p>Fax: ++(43)(2742)-9005-14170</p> <p>E-mail: martin.kavalek@noel.gv.at</p> <p>Oberösterreich: Amt der Oberösterreichischen Landesregierung, Koordinationsstelle für EU-Regionalpolitik, Annagasse 2, 4010 Linz</p> <p>Tel: ++(43) (732) 7720-14823</p> <p>Fax: ++(43) (732) 7720-14819</p> <p>E-mail: robert.schroetter@ooe.gv.at</p> <p>Wien: Amt der Wiener Landesregierung, MA 27 – EU-Förderungen, Rathaus, A-1080 Wien</p> <p>Tel: ++(43)(1)-4000-82582</p> <p>Fax: ++(43)(1)-4000-7215</p> <p>E-mail: sto@meu.magwien.gv.at</p> <p>In the event of difficulties in deciding who is to be responsible, the Managing Authority (Republic of Austria, Federal Chancellery, Department IV/4, Hohenstaufengasse 3, A-1010 Vienna) shall reach a decision on the assignment of a project to a responsible authority for the co-ordination of the project.</p>	<p>Regional office of Jihomoravský kraj. Žerotínovo nám.3/5, 601 82 Brno tel:++420 541 651 306 Fax: ++420 541 651 349 Email: zatloukal.artur@kr-jihomoravsky.cz</p> <p>Regional office of kraj Vysočina Žižkova 16, 58601 Jihlava Tel:++420 564 602 545 Fax: ++420 564 602 423 Email: moudra.j@kr-vysocina.cz</p> <p>Regional office of Jihočeský kraj U Zimního stadionu 1952/2, 37076 České Budějovice Tel: ++420 386 720 144 Fax: ++420 386 359 011 Email: navara@kraj-jihocesky.cz</p> <p>Centre for Regional Development Vinohradská 46 Praha 2, 120 41 Tel: ++420 221580 201 Fax: ++420 221580 248 Email: ryslavy@crr.cz</p> <p>CRD Regional office for NUTS II South East Obilní trh 7 624 00 Brno tel/fax: ++ 420 541212357 Email: jihovychod@crr.cz</p>

10 Code Numbers for Assistance from the Structural Funds

161, 162, 163, 164, 1641, 165, 166, 167, 182, 183

11 Desired Effects on the Integration of the Border Region

Creation of and co-operation in cross-border business centres

Enhanced attractiveness of the location area on both sides of the border

Cross-border know-how transfer

12 Indicators for Monitoring and Evaluation

Impact Indicators:

To create and expand cross-border business information and communication, and business services structures
To improve the overall conditions for building up cross-border co-operation between and among businesses as well as co-operation networks
Know-how and technology transfer, networking with science, R&D facilities
Common external image / integrated marketing of border regions
Reduction of legal and technical barriers

Output Indicators:

Number of projects providing physical support for SME (plant and equipment etc.)
Number of projects providing financial support to introduce environmental technologies or to develop eco-products
Number of projects providing business advisory services
Number of projects providing support for information networks, operational expenditure, technology oriented business databases, software, presentations, cooperation meetings, participation in fares etc.
Number of projects providing support for building up and establish regional impulse centres
Number of projects providing new financial engineering (venture and seed capital funds, etc.) for SME; Number of new business launched
Number of projects providing services in the support of the social economy (providing care for pendants, health and safety, cultural activities);
Number of vocational training and training projects; Number of trainees
Number of projects providing support for RTDI infrastructure;
Number of projects creating networks or services for knowledge transfer

Co-operation Indicators:

5 phases of cross-border co-operation; planned / achieved

Gender mainstreaming indicators:

the project: has equality between the sexes as its main focus, is positive in terms of male-female equality or is neutral in terms of such equality

Environmental Indicator:

the project: has the environment as its main focus; is environmentally friendly; is environmentally neutral

Location Indicator:

the project is: urban; rural; not geographically delimited

Priority Axis 1 / Measure 2:

Cross-border Co-operation of Enterprises (SMEs) and Counselling and Support of Cross-border Business Activities

1 Contents / Object of the Measure

The majority of small and medium-sized companies in the cross-border region are inadequately equipped technologically, have a low innovation intensity, and lack an export orientation, which results in a rather weak cooperative behaviour. Especially noticeable is the lack of cooperation among businesses with regard to employee training and research, and development. Even less attention is given to the possibilities offered by existing cross-border economic structures and the regional production and service priorities to intensify purchasing and sales relationships, to set up co-operation networks, joint marketing activities and the establishment of corresponding networks to improve competitiveness. More so than in Austria, the restructuring of some economic sectors in the Czech Republic, e.g. in the agricultural sector, is of great significance.

Relying on the options listed in the CIP projects with the focus in the following areas will be supported:

- Support of economic co-operation and co-operation of and with R&D institutions; support of joint development of new products and new production processes, including marketing and advertising activities (e.g. industry and agriculture), development of qualification associations of enterprises (e.g. management skills)
- Building up cross-border business co-operation networks and platforms (e.g. supply and demand networks, SMEs & joint ventures, business broking and clustering) for all sectors
- Supporting of existing platforms of innovative companies in order to encourage innovative ideas and to commercialise outputs of R&D
- Accompanying consultancy and coaching of cross-border economic activities (e.g. export/import, different legal systems)
- Development of new cross-border business services incl. Private and social services (e.g. technology transfer, information distribution, consultancy)
- Building up information systems and support for the implementation of events (partner-markets, trade fairs, information on financing etc.)
- Supporting analyses and studies with the focus on the contents of this measure
- Support for changing the traditional structures of production (e.g. agriculture) through know-how transfer, increasing producer awareness of niche markets, speciality markets and opportunities to obtain added value

Priority Axis 1 / Measure 2:

Cross-border Co-operation of Enterprises (SMEs) and Counselling and Support of Cross-border Business

Activities

2 Goals

Development of regional core competencies (e.g. telecommunications, transport and logistics, environmental and medical technologies, East-West know-how transfer)

Intensified business co-operation projects (esp. SMEs) in the border area for strengthening the region's economic power and fostering export activities

Increasing the innovative power and competitiveness of enterprises (esp. SMEs)

Securing and expanding employment in the industrial and the service sector in the border regions

Increasing awareness of opportunities for economic collaboration, added value opportunities and the development of non-traditional enterprises

3 Recipients / Beneficiaries

Austria	Czech Republic
<p>Local and regional authorities</p> <p>Associations</p> <p>Natural and legal persons under private and public law and partnerships under civil law</p> <p>NGOs</p>	<p>Municipalities (associations of the municipalities) – Act No.128/2000 Coll., on Municipalities.</p> <p>Towns – Act No. 128/2000 Coll., on Municipalities.</p> <p>Regions – Act No.129/2000 Coll., on Regions.</p> <p>Organizations established by municipalities and regions (and 100% in their ownership) providing public services – necessary statement from the companies register.</p> <p>Non-governmental non-profit organizations (NGOs) – according to the Government Principles for Providing State Budget Funds to the Non-profit Organizations they are defined as:</p> <ul style="list-style-type: none"> • civic associations – acting under Act No.83/1991 Coll., on the Associations of the Citizens • public-benefit organizations – established under Act No.248/1995 Coll., on Public-benefit Organizations • church corporate bodies – established under Act No.3/2002 Coll., on Church and Religious institutions (insofar as they provide health, education and social services or social protection of children) • Interest association of the corporate bodies established under Act No. 40/1964 Coll., Civil Code (as amended) in order to provide service for the regional development in the border regions with Austria. • foundations and endowment funds – established under Act No.227/1997 Coll., on Foundation and Endowment fund <p>Chambers of commerce and agrarian chambers – Act No. 301/1992 Coll., on the Chamber of Commerce and Agrarian Chamber.</p> <p>State established organization</p>

4 Formal Criteria for EU Co-financing

Economic and organisational capacity of the entity responsible for the project

Amount and appropriateness of the costs of the project

Secured financing, appropriateness of the ratio between own funds and public assistance (taking into account the possible EU co-financing according to the programme as well as any other national public funds applied for, already granted or promised)

Relevant project aim in line with sectoral policy objectives (if required, also including statements of other administrative bodies concerned)

Fulfilment of the specific requirements for assistance under INTERREG IIIA – pursuant to the CIP and the Programme Complement (see item no. 5)

Compliance with the criteria for ERDF assistance (pursuant to Council Regulation no. 1783/99) and with the Commission Regulation concerning the eligibility of operations

Compliance with other relevant EU regulations (subsidy laws, rules for the awarding of public contracts, environmental law, etc.)

Observance of the condition that any current business of institutions within the framework of their legal mandate or any activities covered by base subsidies cannot be funded under Interreg IIIA.

5 Specific Criteria for the Project Selection

See chapter 3 of the Programme Complement.

6 Eligible Costs

As a general rule:

Project-related material costs and operating expenses

Personnel costs

Planning costs

Project-related investment costs (e.g. construction, infrastructure, development, machinery, hard/software)

Consulting expenses

7 Type and Amount of EU Assistance

Unrecoverable assistance, according to programme 50% at max. for Austria, 75% at max. for Czech Republic

However, in this connection and if applicable (depending on the project), it must be observed that the maximum amount of permissible assistance for a specific project according to EU competition law will not be exceeded.

8 Implementation Instruments – Legal Basis

- a) Legal basis for the granting of the EU funds
- b) Legal basis for the granting of national funds

Austria	Czech Republic
<p>a) Einzelentscheidungen der Bundesländer Niederösterreich, Oberösterreich und Wien</p> <p>b)</p> <ol style="list-style-type: none"> 1. Einzelentscheidungen der Länder Niederösterreich, Oberösterreich und Wien 2. Einzelentscheidungen von Gemeinden in Niederösterreich, Oberösterreich 3. Allgemeine Rahmenrichtlinie für die Gewährung von Förderungen aus Bundesmitteln (BMF.-Z.01 3301/7-II/3/77 vom 5. Mai 1977, geltende Fassung) 4. Einzelentscheidungen des Bundes 5. Bundesministerium für Wirtschaft und Arbeit (BMWA): -Einzelentscheidung 6. Bundesministerium für Verkehr, Innovation und Technologie (BMVIT): -Sonderrichtlinie Produktfindung -Richtlinien für die Gewährung von Förderungen gemäß Innovations- und Technologiefondsgesetz (ITFG) <p>Telematik & C-Tech Wien (Zuschüsse, de minimis) Öko Business Plan der Stadt Wien (Zuschüsse, de minimis) Nahversorgungs Starthilfe der Stadt Wien (Zuschüsse, de minimis) Strukturverbesserungsaktion der Stadt Wien (Zuschüsse, notifiziert KMU) Innovations- und Technologieförderung der Stadt Wien (Zuschüsse, notifiziert FTE) Eco-Plus-Richtlinie für regionale betriebliche Investitionsprojekte in Niederösterreich (N 109/98, Laufzeit bis 31.12.2006) Richtlinien für die Förderungsaktion der NÖ Grenzlandförderungsgesellschaft Richtlinien für die Förderung der Markterschließung des Landes Niederösterreich NÖ d 24 Richtlinien für die Förderung von Kooperationen des Landes Niederösterreich NÖ d 25</p>	<p>a)</p> <ul style="list-style-type: none"> - Individual acts of the regions, South Bohemia, South Moravia, Vysočina - individual acts of the municipalities from the regions South Bohemia, South Moravia, Vysočina - Law No. 218/2000 Sb. on budgetary rules and changes of some relevant Acts - Law No. 205/2000 Sb. on budgetary rules of territorial bodies <p>b)</p> <ul style="list-style-type: none"> - Individual acts of the regions, South Bohemia, South Moravia, Vysočina - individual acts of the municipalities from the regions South Bohemia, South Moravia, Vysočina - Law No. 218/2000 Sb. on budgetary rules and changes of some relevant Acts - Law No. 205/2000 Sb. on budgetary rules of territorial bodies

Priority Axis 1 / Measure 2:

Cross-border Co-operation of Enterprises (SMEs) and Counselling and Support of Cross-border Business Activities

9 Competent Authority / Contact Point for SF Grants

Austria	Czech Republic
<p>Niederösterreich: Amt der Niederösterreichischen Landesregierung, Abt. RU2, Landhausplatz 1, A-3109 St. Pölten</p> <p>Tel: ++(43)(2742)-9005-14329</p> <p>Fax: ++(43)(2742)-9005-14170</p> <p>E-mail: martin.kavalek@noel.gv.at</p> <p>Oberösterreich: Amt der Oberösterreichischen Landesregierung, Koordinationsstelle für EU-Regionalpolitik, Annagasse 2, 4010 Linz</p> <p>Tel: ++(43) (732) 7720-14823</p> <p>Fax: ++(43) (732) 7720-14819</p> <p>E-mail: robert.schroetter@ooe.gv.at</p> <p>Wien: Amt der Wiener Landesregierung, MA 27 – EU-Förderungen, Rathaus, A-1080 Wien</p> <p>Tel: ++(43)(1)-4000-82582</p> <p>Fax: ++(43)(1)-4000-7215</p> <p>E-mail: sto@meu.magwien.gv.at</p> <p>In the event of difficulties in deciding who is to be responsible, the Managing Authority (Republic of Austria, Federal Chancellery, Department IV/4, Hohenstaufengasse 3, A-1010 Vienna) shall reach a decision on the assignment of a project to a responsible authority for the co-ordination of the project.</p>	<p>Regional office of Jihomoravský kraj. Žerotínovo nám.3/5, 601 82 Brno tel:++420 541 651 306 Fax: ++420 541 651 349 Email: zatloukal.artur@kr-jihomoravsky.cz</p> <p>Regional office of kraj Vysočina Žižkova 16, 58601 Jihlava Tel:++420 564 602 545 Fax: ++420 564 602 423 Email: moudra.j@kr-vysocina.cz</p> <p>Regional office of Jihočeský kraj U Zimního stadionu 1952/2, 37076 České Budějovice Tel: ++420 386 720 144 Fax: ++420 386 359 011 Email: navara@kraj-jihocesky.cz</p> <p>Centre for Regional Development Vinohradská 46 Praha 2, 120 41 Tel: ++420 221580 201 Fax: ++420 221580 248 Email: ryslavy@crr.cz</p> <p>CRD Regional office for NUTS II South East Obilní trh 7 624 00 Brno tel/fax: ++ 420 541212357 Email: jihovychod@crr.cz</p>

10 Code Numbers for Assistance from the Structural Funds

161, 162, 163, 164, 1641, 165, 166, 182, 183, 167+113+128, 1305+1307

Priority Axis 1 / Measure 2:

Cross-border Co-operation of Enterprises (SMEs) and Counselling and Support of Cross-border Business Activities

11 Desired Effects on the Integration of the Border Region

Cross-border co-operation projects of enterprises, networks and clusters
Enhanced attractiveness of the location area on both sides of the border
Cross-border know-how transfer

12 Indicators for Monitoring and Evaluation

Impact Indicators:

Expansion of market / integrated development of offerings, marketing and external image
Integrated production (factor combinations) and development of services, building up of supply and delivery relationships
Intensifying partner searches, and the development and creation of co-operation projects and networks
Know-how and technology transfer, consulting, common services for enterprises
Support for co-operation among enterprises in sectors experiencing strong structural changes

Output Indicators:

Number of projects providing physical support for SME (plant and equipment etc.) [number of jobs created]
Number of projects providing financial support to introduce environmental technologies or to develop eco-products
Number of projects providing business advisory services
Number of projects providing support for information networks, operational expenditure, technology oriented business databases, software, presentations, cooperation meetings, participation in fares etc.
Number of projects providing support for building up and establishing regional impulse centres
Number of projects providing new financial engineering (venture and seed capital funds, etc.) for SME; Number of new business launched
Number of projects providing services in the support of the social economy (providing care for pendants, health and safety, cultural activities;
Number of projects providing support for RTDI infrastructure;
Number of projects creating networks or services for knowledge transfer
Number of vocational training and training projects (rural development, forestry, SMEs); number of trainees
Number of projects providing services for promoting the adoption and the development of rural areas

Cooperation Indicators:

5 phases of crossborder cooperation; planned / achieved

Gender mainstreaming indicators:

the project: has equality between the sexes as its main focus, is positive in terms of male-female equality or is neutral in terms of such equality

Environmental Indicator:

the project: has the environment as its main focus; is environmental friendly; is environmentally neutral

Location Indicator:

the project is: urban; rural; not geographically delimited

Priority Axis 1 / Measure 3: Tourism and Leisure

1 Contents / Object of the Measure

Great importance for the development of the Austrian-Czech border region is given to the tourism and leisure industry. Overall the significance, except for a few areas and towns, on both sides of the border is still rather small. Meanwhile, it is the peripheral rural zones in the extended catchment areas of urban agglomerations as well as the fledgling soft tourism offerings that have sparked increasing demand over the past few years.

In the Austrian-Czech border region there is still a large deficit regarding the development and design of tourism offerings, company structures, the quality of the services, marketing measures and the co-operation and organisational structure.

<p>Relying on the options listed in the JPD projects with the focus in the following areas will be supported:</p> <p>Extension: and improvement of activities in health, wellness, congress and cultural tourism, nature tourism</p> <p>Development of joint destinations and destination management</p> <p>Networks of facilities and tourist offers</p> <p>Joint marketing of the border regions</p> <p>Development of joint and harmonised attractions</p> <p>Development of a joint soft tourist infrastructure</p> <p>Building up and developing of joint information, reservation etc. Systems for collaboration in tourism and leisure</p> <p>Support of know-how transfer activities (e.g. practical experiences from existing local/regional tourist boards)</p> <p>Support of agro-tourism activities</p> <p>Development and support of joint tourism and leisure-time facilities</p>

2 Goals

<p>Joint development, enhanced attractiveness and modernisation of cross-border tourist and leisure facilities, products and services</p> <p>Enhancing business in the field of tourism and leisure time activities while at the same time taking nature and the environment into account (sustainability)</p> <p>Enhancing the attractiveness of and modernising tourist and leisure facilities / services</p> <p>Using the potential for synergy effects with other sectors (tourism-induced demand effects)</p> <p>Highlighting the special features of the joint region</p> <p>Joint appearance on international markets (broader spectrum of tourist and leisure facilities/services)</p> <p>Harmonised strategies and activities on third markets</p>

3 Recipients / Beneficiaries

Austria	Czech Republic
<p>Local and regional authorities</p> <p>Associations</p> <p>Natural and legal persons under private and public law and partnerships under civil law</p> <p>NGOs</p>	<p>Municipalities (associations of the municipalities) – Act No.128/2000 Coll., on Municipalities.</p> <p>Towns – Act No. 128/2000 Coll., on Municipalities.</p> <p>Regions – Act No.129/2000 Coll., on Regions.</p> <p>Organizations established by municipalities and regions (and 100% in their ownership) providing public services – necessary statement from the companies register.</p> <p>Non-governmental non-profit organizations (NGOs) – according to the Government Principles for Providing State Budget Funds to the Non-profit Organizations they are defined as:</p> <ul style="list-style-type: none"> • civic associations – acting under Act No.83/1991 Coll., on the Associations of the Citizens • public-benefit organizations – established under Act No.248/1995 Coll., on Public-benefit Organizations • church corporate bodies – established under Act No.3/2002 Coll., on Church and Religious institutions (insofar as they provide health, education and social services or social protection of children) • Interest association of the corporate bodies established under Act No. 40/1964 Coll., Civil Code (as amended) in order to provide service for the regional development in the border regions with Austria. • foundations and endowment funds – established under Act No.227/1997 Coll., on Foundation and Endowment fund <p>Chambers of commerce and agrarian chambers – Act No. 301/1992 Coll., on the Chamber of Commerce and Agrarian Chamber.</p> <p>State established organization</p>

4 Formal Criteria for EU Co-financing

Economic and organisational capacity of the entity responsible for the project

Amount and appropriateness of the costs of the project

Secured financing, appropriateness of the ratio between own funds and public assistance (taking into account the possible EU co-financing according to the programme as well as any other national public funds applied for, already granted or promised)

Relevant project aim in line with sectoral policy objectives (if required, also including statements of other administrative bodies concerned)

Fulfilment of the specific requirements for assistance under INTERREG IIIA – pursuant to the CIP and the Programme Complement (see item no. 5)

Compliance with the criteria for ERDF assistance (pursuant to Council Regulation no. 1783/99) and with the Commission Regulation concerning the eligibility of operations

Compliance with other relevant EU regulations (subsidy laws, rules for the awarding of public contracts, environmental law, etc.)

Observance of the condition that any current business of institutions within the framework of their legal mandate or any activities covered by base subsidies cannot be funded under Interreg IIIA.

5 Specific Criteria for the Project Selection

See chapter 3 of the Programme Complement.

6 Eligible Costs

As a general rule:

Project-related material costs and operating expenses

Personnel costs

Planning costs

Project-related investment costs (e.g. construction, infrastructure, development, machinery, hard/software)

Consulting expenses

7 Type and Amount of EU Assistance

Unrecoverable assistance, according to programme 50% at max. for Austria, 75% at max. for Czech Republic

In this connection, it must be observed that the maximum amount of permissible assistance for a specific project according to EU competition law – composed of financial support from EU Structural Funds and national funds – will not be exceeded.

8 Implementation Instruments – Legal Basis

- a) Legal basis for the granting of the EU funds
- b) Legal basis for the granting of national funds

Austria	Czech Republic
<p>a) Einzelentscheidungen der Bundesländer Niederösterreich, Oberösterreich und Wien</p> <p>b) Einzelentscheidungen der Länder Niederösterreich, Oberösterreich und Wien</p> <ol style="list-style-type: none"> 1. Allgemeine Rahmenrichtlinie für die Gewährung von Förderungen aus Bundesmitteln (BMF.-Z.01 3301/7-II/3/77 vom 5. Mai 1977, geltende Fassung) 2. Einzelentscheidungen von Gemeinden in Niederösterreich, Oberösterreich 3. Einzelentscheidungen des Bundes 4. ERP-Fonds: Richtlinie "ERP – Tourismusprogramm" 5. Bundesministerium für Wirtschaft und Arbeit (BMWA): TOP-Tourismus-Förderung 2000-2006 6. Einzelentscheidung 7. Einzelentscheidung des Bundesministeriums für Bildung, Wissenschaft und Kultur (BMBWK) 8. Einzelentscheidung des Bundeskanzleramtes (BKA) 9. Eco-Plus-Richtlinien für die regionale Infrastrukturförderung in Niederösterreich (N109/98 Laufzeit bis 31.12.2006) 11. NÖ Kulturförderungsgesetz 1996. LGBl.5301; Richtlinien für die Förderung nach dem NÖ Kulturförderungsgesetz 1996 12. NÖ.F.I.T.2006TOP (Investitionsförderung) N 157 / 96 (Verlängerungsnotifikation wurde bereits beantragt) 13. NÖ.F.I.T.2006INFRA (Investitionsförderung – unterliegt nicht dem Wettbewerbsrecht) 14. NÖ.F.I.T.2006PROFIL (Softwareförderung) N 16 	<p>a)</p> <ul style="list-style-type: none"> - Individual acts of the regions, South Bohemia, South Moravia, Vysočina - individual acts of the municipalities from the regions South Bohemia, South Moravia, Vysočina - Law No. 218/2000 Sb. on budgetary rules and changes of some relevant Acts - Law No. 205/2000 Sb. on budgetary rules of territorial bodies <p>b)</p> <ul style="list-style-type: none"> - Individual acts of the regions, South Bohemia, South Moravia, Vysočina - individual acts of the municipalities from the regions South Bohemia, South Moravia, Vysočina - Law No. 218/2000 Sb. on budgetary rules and changes of some relevant Acts - Law No. 205/2000 Sb. on budgetary rules of territorial bodies

9 Competent Authority / Contact Point for SF Grants

Austria	Czech Republic
<p>Niederösterreich: Amt der Niederösterreichischen Landesregierung, Abt. RU2, Landhausplatz 1, A-3109 St. Pölten</p> <p>Tel: ++(43)(2742)-9005-14329</p> <p>Fax: ++(43)(2742)-9005-14170</p> <p>E-mail: martin.kavalek@noel.gv.at</p> <p>Oberösterreich: Amt der Oberösterreichischen Landesregierung, Koordinationsstelle für EU-Regionalpolitik, Annagasse 2, 4010 Linz</p> <p>Tel: ++(43) (732) 7720-14823</p> <p>Fax: ++(43) (732) 7720-14819</p> <p>E-mail: robert.schroetter@ooe.gv.at</p> <p>Wien: Amt der Wiener Landesregierung, MA 27 – EU-Förderungen, Rathaus, A-1080 Wien</p> <p>Tel: ++(43)(1)-4000-82582</p> <p>Fax: ++(43)(1)-4000-7215</p> <p>E-mail: sto@meu.magwien.gv.at</p> <p>In the event of difficulties in deciding who is to be responsible, the Managing Authority (Republic of Austria, Federal Chancellery, Department IV/4, Hohenstaufengasse 3, A-1010 Vienna) shall reach a decision on the assignment of a project to a responsible authority for the co-ordination of the project.</p>	<p>Regional office of Jihomoravský kraj. Žerotínovo nám.3/5, 601 82 Brno tel:++420 541 651 306 Fax: ++420 541 651 349 Email: zatloukal.artur@kr-jihomoravsky.cz</p> <p>Regional office of kraj Vysočina Žižkova 16, 58601 Jihlava Tel:++420 564 602 545 Fax: ++420 564 602 423 Email: moudra.j@kr-vysocina.cz</p> <p>Regional office of Jihočeský kraj U Zimního stadionu 1952/2, 37076 České Budějovice Tel: ++420 386 720 144 Fax: ++420 386 359 011 Email: navara@kraj-jihocesky.cz</p> <p>Centre for Regional Development Vinohradská 46 Praha 2, 120 41 Tel: ++420 221580 201 Fax: ++420 221580 248 Email: ryslavy@crr.cz</p> <p>CRD Regional office for NUTS II South East Obilní trh 7 624 00 Brno tel/fax: ++ 420 541212357 Email: jihovychod@crr.cz</p>

10 Code Numbers for Assistance from the Structural Funds

1711-1714, 1712+1713, 172 + 173, 174, 1310

11 Desired Effects on the Integration of the Border Region

Cross-border co-ordination and marketing of offerings
Strengthening of the tourism and leisure-time industry in the border area
Closing gaps in border-related infrastructural facilities for tourism

12 Indicators for Monitoring and Evaluation

Impact Indicators:

Expansion of the market / integrated development of offerings, marketing and external image

Development of services and integrated production (factor combinations)

Intensifying partner searches, and the development and creation of co-operation projects and networks

Know-how transfer, consulting, common services for enterprises

Improving the services and products and the joint use of tourism infrastructure.

Output Indicators:

Number of projects providing support for tourism facilities, attractions, tourism business

km of biking / hiking / horseback riding path constructed

Number of projects providing support for crossborder products and services for sporting, cultural and leisure activities

Number of vocational training and training projects (tourism); number of trainees

Number of projects providing support for rural tourism

Cooperation Indicators:

5 phases of crossborder cooperation; planned / achieved

Gender mainstreaming indicators:

the project: has equality between the sexes as its main focus, is positive in terms of male-female equality or is neutral in terms of such equality

Environmental Indicator:

the project: has the environment as its main focus; is environmental friendly; is environmentally neutral

Location Indicator:

the project is: urban; rural; not geographically delimited

Priority Axis 2 / Measure 1:

Improvement of Cross-border Transport and Telecommunication Infrastructure

1 Contents / Object of the Measure

The Austrian-Czech border region is, in large part, classified as a periphery region with adverse accessibility conditions. Accordingly the connection to better quality transport and telecommunications networks is to some extent insufficient. Decisive for the intensification of cross-border activities is border openness, as well as the availability of cross-border transport options and an infrastructure of relevance for small-scale business activity (e.g. tourism relevant infrastructure).

These measures are aimed primarily at material projects, while within the scope of Measure 2 mostly immaterial projects are to be promoted. The allocation of complex projects to one or other of the measures is based on the main objective of the planned project.

Relying on the options listed in the JPD projects with the focus in the following areas will be supported:

- Infrastructural improvements/renewal to facilitate border crossing (border crossing points, bicycle and hiking routes, road links of regional/local cross-border relevance)
- Measures in the field of border crossing procedures
- Expansion and cross-border interlinking of basic infrastructural facilities relevant for tourism (e.g. network of bicycle routes)
- Planning and implementation of road projects in border regions
- Improvement of the railway network (e.g. closing of gaps)
- Improvement of telecommunication infrastructure
- Establishment of and/or connection to data highways
- Development and establishment of telematic facilities

2 Goals

- Facilitation of movement across borders, interlinking between infrastructural facilities
- Improvement of cross-border traffic development including all transport modes
- Coordinated development of telecommunication infrastructure

3 Recipients / Beneficiaries

Austria	Czech Republic
<p>Local and regional authorities</p> <p>Associations</p> <p>Natural and legal persons under private and public law and partnerships under civil law</p> <p>NGOs</p>	<p>Municipalities (associations of the municipalities) – Act No.128/2000 Coll., on Municipalities.</p> <p>Towns – Act No. 128/2000 Coll., on Municipalities.</p> <p>Regions – Act No.129/2000 Coll., on Regions.</p> <p>Organizations established by municipalities and regions (and 100% in their ownership) providing public services – necessary statement from the companies register.</p> <p>Non-governmental non-profit organizations (NGOs) – according to the Government Principles for Providing State Budget Funds to the Non-profit Organizations they are defined as:</p> <ul style="list-style-type: none"> • civic associations – acting under Act No.83/1991 Coll., on the Associations of the Citizens • public-benefit organizations – established under Act No.248/1995 Coll., on Public-benefit Organizations • church corporate bodies – established under Act No.3/2002 Coll., on Church and Religious institutions (insofar as they provide health, education and social services or social protection of children) • Interest association of the corporate bodies established under Act No. 40/1964 Coll., Civil Code (as amended) in order to provide service for the regional development in the border regions with Austria. • foundations and endowment funds – established under Act No.227/1997 Coll., on Foundation and Endowment fund <p>Chambers of commerce and agrarian chambers – Act No. 301/1992 Coll., on the Chamber of Commerce and Agrarian Chamber.</p> <p>State established organization</p>

4 Formal Criteria for EU Co-financing

Economic and organisational capacity of the entity responsible for the project

Amount and appropriateness of the costs of the project

Secured financing, appropriateness of the ratio between own funds and public assistance (taking into account the possible EU co-financing according to the programme as well as any other national public funds applied for, already granted or promised)

Relevant project aim in line with sectoral policy objectives (if required, also including statements of other administrative bodies concerned)

Fulfilment of the specific requirements for assistance under INTERREG IIIA – pursuant to the CIP and the Programme Complement (see item no. 5)

Compliance with the criteria for ERDF assistance (pursuant to Council Regulation no. 1783/99) and with the Commission Regulation concerning the eligibility of operations

Compliance with other relevant EU regulations (subsidy laws, rules for the awarding of public contracts, environmental law, etc.)

In case of infrastructure development and electronic communications the compliance with Commission Staff Working Paper on “Guidelines on the criteria and modalities for the use of structural funds in electronic communications” SEC(2003)895 of 28 July 2003.

Observance of the condition that any current business of institutions within the framework of their legal mandate or any activities covered by base subsidies cannot be funded under Interreg IIIA.

5 Specific Criteria for the Project Selection

See chapter 3 of the Programme Complement.

6 Eligible Costs

As a general rule:

Project-related material costs and operating expenses

Personnel costs

Planning costs

Project-related investment costs (e.g. construction, infrastructure, development, machinery, hard/software)

Consulting expenses

7 Type and Amount of EU Assistance

Unrecoverable assistance, according to programme 50% at max. for Austria, 75% at max. for Czech Republic

In this connection, it must be observed that the maximum amount of permissible assistance for a specific project according to EU competition law – composed of financial support from EU Structural Funds and national funds – will not be exceeded.

Art. 29 (4) a), b)

no infrastructures which are associated with considerable net earnings

no investments in enterprises provided

8 Implementation Instruments – Legal Basis

a) Legal basis for the granting of the EU funds

b) Legal basis for the granting of national funds

Austria	Czech Republic
<p>a) Einzelentscheidungen der Bundesländer Niederösterreich, Oberösterreich und Wien</p> <p>b)</p> <ol style="list-style-type: none"> 1. Einzelentscheidungen der Länder Niederösterreich, Oberösterreich und Wien 2. Einzelentscheidungen von Gemeinden in Niederösterreich, Oberösterreich 3. Allgemeine Rahmenrichtlinie für die Gewährung von Förderungen aus Bundesmitteln (BMF.-Z.01 3301/7-II/3/77 vom 5. Mai 1977, geltende Fassung) 4. Einzelentscheidungen des Bundes 4. Telematik & C-Tech Wien (Zuschüsse, de minimis) 5. Innovations- und Technologieförderung der Stadt Wien (Zuschüsse, notifiziert FTE), 6. U-Bahn Hilfsaktion d. Stadt Wien &WKW (Zuschüsse, Zinszuschuß) 	<p>a)</p> <ul style="list-style-type: none"> - Individual acts of the regions, South Bohemia, South Moravia, Vysočina - individual acts of the municipalities from the regions South Bohemia, South Moravia, Vysočina - Law No. 218/2000 Sb. On budgetary rules and changes of some relevant Acts - Law No. 205/2000 Sb. On budgetary rules of territorial bodies <p>b)</p> <ul style="list-style-type: none"> - Individual acts of the regions, South Bohemia, South Moravia, Vysočina - individual acts of the municipalities from the regions South Bohemia, South Moravia, Vysočina - Law No. 218/2000 Sb. On budgetary rules and changes of some relevant Acts - Law No. 205/2000 Sb. On budgetary rules of territorial bodies

9 Competent Authority / Contact Point for SF Grants

Austria	Czech Republic
<p>Niederösterreich: Amt der Niederösterreichischen Landesregierung, Abt. RU2, Landhausplatz 1, A-3109 St. Pölten</p> <p>Tel: ++(43)(2742)-9005-14329</p> <p>Fax: ++(43)(2742)-9005-14170</p> <p>E-mail: martin.kavalek@noel.gv.at</p> <p>Oberösterreich: Amt der Oberösterreichischen Landesregierung, Koordinationsstelle für EU-Regionalpolitik, Annagasse 2, 4010 Linz</p> <p>Tel: ++(43) (732) 7720-14823</p> <p>Fax: ++(43) (732) 7720-14819</p> <p>E-mail: robert.schroetter@ooe.gv.at</p> <p>Wien: Amt der Wiener Landesregierung, MA 27 – EU-Förderungen, Rathaus, A-1080 Wien</p> <p>Tel: ++(43)(1)-4000-82582</p> <p>Fax: ++(43)(1)-4000-7215</p> <p>E-mail: sto@meu.magwien.gv.at</p> <p>In the event of difficulties in deciding who is to be responsible, the Managing Authority shall reach a decision on the assignment of a project to a responsible authority for the coordination of the project.</p>	<p>Regional office of Jihomoravský kraj. Žerotínovo nám.3/5, 601 82 Brno tel:++420 541 651 306 Fax: ++420 541 651 349 Email: zatloukal.artur@kr-jihomoravsky.cz</p> <p>Regional office of kraj Vysočina Žižkova 16, 58601 Jihlava Tel:++420 564 602 545 Fax: ++420 564 602 423 Email: moudra.j@kr-vysocina.cz</p> <p>Regional office of Jihočeský kraj U Zimního stadionu 1952/2, 37076 České Budějovice Tel: ++420 386 720 144 Fax: ++420 386 359 011 Email: navara@kraj-jihocesky.cz</p> <p>Centre for Regional Development Vinohradská 46 Praha 2, 120 41 Tel: ++420 221580 201 Fax: ++420 221580 248 Email: ryslavy@crr.cz</p> <p>CRD Regional office for NUTS II South East Obilní trh 7 624 00 Brno tel/fax: ++ 420 541212357 Email: jihovychod@crr.cz</p>

10 Code Numbers for Assistance from the Structural Funds

311-319, 322, 323, 324

11 Desired Effects on the Integration of the Border Region

Harmonisation / increased compatibility of infrastructure systems in the border region

Development of common standards

Physical and virtual networking within the border region

Improvement of accessibility within the border region

12 Indicators for Monitoring and Evaluation

Impact Indicators:

(Preparation of) cross-border infrastructure, faster and improved transportation links

(Preparation of) links to international transportation routes

Cross-border networking of business locations

Improving the services and products, and integrated use of information technology and telecommunications infrastructure.

Cross-border development and use of IT applications, telematics services, etc.

Output Indicators:

Number of projects providing support for the improvement of rail, road, airport, urban transport, ports, multimodal transport intelligent transport systems;

Number of projects providing support for the improvement of Information and Communication technology

Number of projects providing IT services and applications for citizens (health, administration, education)

Vocational training and training projects (information society); number of projects providing IT services and applications for SMEs

Cooperation Indicators:

5 phases of crossborder cooperation; planned / achieved

Gender mainstreaming indicators:

the project: has equality between the sexes as its main focus, is positive in terms of male-female equality or is neutral in terms of such equality

Environmental Indicator:

the project: has the environment as its main focus; is environmental friendly; is environmentally neutral

Location Indicator:

the project is: urban; rural; not geographically delimited

**Priority Axis 2 / Measure 2:
Transport Organisation, Planning and Logistics**

1 Contents / Object of the Measure

Planning, organisation and optimisation of cross-border public transport are necessary to be able to manage the strong growth in cross-border traffic in the case of EU enlargement and to meet the intra-regional and inter-regional activity and communication needs in respect to transport and information technology.

The coordination of projects, information about planning, offerings etc. are an important prerequisite for an efficient organisation of current and future traffic flow as well as information and communications needs.

Relying on the options listed in the JPD projects with the focus in the following areas will be supported:

- Feasibility studies and planning, as well as preparative development and implementation planning in the common border area
- Studies, applications
- Promotion of cross-border public short-distance transport systems and telecommunication systems (associations between transport organisations, harmonisation of schedules)
- Improvement and enhancement of systems for cross-border public transport and logistics
- Support of the cross-border-orientated elements of transport organisation and planning with a special focus on border crossing centres of business and tourism
- Development and establishment of cross-border information systems, transport and logistics schemes, planning and feasibility studies and analyses, establishment of logistics centres, development and establishment of networks

2 Goals

<p>Improvement of cross-border transport flows and cross-border mobility</p> <p>Improvement of cross-border accessibility</p> <p>Improvement of links to the TEN (Trans European Network) and PEN (Pan European Network)</p> <p>Co-ordinated implementation of the activities for developing the transport sector in the cross-border region</p> <p>Removal of obstacles resulting from different systems and providers in the field of cross-border telecommunication</p>

3 Recipients / Beneficiaries

Austria	Czech Republic
<p>Local and regional authorities</p> <p>Associations</p> <p>Natural and legal persons under private and public law and partnerships under civil law</p> <p>NGOs</p>	<p>Municipalities (associations of the municipalities) – Act No.128/2000 Coll., on Municipalities.</p> <p>Towns – Act No. 128/2000 Coll., on Municipalities.</p> <p>Regions – Act No.129/2000 Coll., on Regions.</p> <p>Organizations established by municipalities and regions (and 100% in their ownership) providing public services – necessary statement from the companies register.</p> <p>Non-governmental non-profit organizations (NGOs) – according to the Government Principles for Providing State Budget Funds to the Non-profit Organizations they are defined as:</p> <ul style="list-style-type: none"> • civic associations – acting under Act No.83/1991 Coll., on the Associations of the Citizens • public-benefit organizations – established under Act No.248/1995 Coll., on Public-benefit Organizations • church corporate bodies – established under Act No.3/2002 Coll., on Church and Religious institutions (insofar as they provide health, education and social services or social protection of children) • Interest association of the corporate bodies established under Act No. 40/1964 Coll., Civil Code (as amended) in order to provide service for the regional development in the border regions with Austria. • foundations and endowment funds – established under Act No.227/1997 Coll., on Foundation and Endowment fund <p>Chambers of commerce and agrarian chambers – Act No. 301/1992 Coll., on the Chamber of Commerce and Agrarian Chamber.</p> <p>State established organization</p>

4 Formal Criteria for EU Co-financing

Economic and organisational capacity of the entity responsible for the project

Amount and appropriateness of the costs of the project

Secured financing, appropriateness of the ratio between own funds and public assistance (taking into account the possible EU co-financing according to the programme as well as any other national public funds applied for, already granted or promised)

Relevant project aim in line with sectoral policy objectives (if required, also including statements of other administrative bodies concerned)

Fulfilment of the specific requirements for assistance under INTERREG IIIA – pursuant to the CIP and the Programme Complement (see item no. 5)

Compliance with the criteria for ERDF assistance (pursuant to Council Regulation no. 1783/99) and with the Commission Regulation concerning the eligibility of operations

Compliance with other relevant EU regulations (subsidy laws, rules for the awarding of public contracts, environmental law, etc.)

Observance of the condition that any current business of institutions within the framework of their legal mandate or any activities covered by base subsidies cannot be funded under Interreg IIIA.

5 Specific Criteria for the Project Selection

See chapter 3 of the Programme Complement.

6 Eligible Costs

As a general rule:

Project-related material costs and operating expenses

Personnel costs

Planning costs

Project-related investment costs (e.g. construction, infrastructure, development, machinery, hard/software)

Consulting expenses

7 Type and Amount of EU Assistance

Unrecoverable assistance, according to programme 50% at max. for Austria, 75% at max. for Czech Republic

In this connection, it must be observed that the maximum amount of permissible assistance for a specific project according to EU competition law – composed of financial support from EU Structural Funds and national funds – will not be exceeded.

8 Implementation Instruments – Legal Basis

a) Legal basis for the granting of the EU funds

b) Legal basis for the granting of national funds

Austria	Czech Republic
<p>a) Einzelentscheidungen der Bundesländer Niederösterreich, Oberösterreich und Wien</p> <p>b)</p> <ol style="list-style-type: none"> 1. Einzelentscheidungen der Länder Niederösterreich, Oberösterreich und Wien 2. Einzelentscheidungen von Gemeinden in Niederösterreich, Oberösterreich 3. Allgemeine Rahmenrichtlinie für die Gewährung von Förderungen aus Bundesmitteln (BMF.-Z.01 3301/7-II/3/77 vom 5. Mai 1977, geltende Fassung) 4. Einzelentscheidungen des Bundes 5. Telematik & C-Tech Wien (Zuschüsse, de minimis) 6. Innovations- und Technologieförderung der Stadt Wien (Zuschüsse, notifiziert FTE), 7. U-Bahn Hilfsaktion d. Stadt Wien & WKW (Zuschüsse, Zinszuschuß) 	<p>a)</p> <ul style="list-style-type: none"> - Individual acts of the regions, South Bohemia, South Moravia, Vysočina - individual acts of the municipalities from the regions South Bohemia, South Moravia, Vysočina - Law No. 218/2000 Sb. On budgetary rules and changes of some relevant Acts - Law No. 205/2000 Sb. On budgetary rules of territorial bodies <p>b)</p> <ul style="list-style-type: none"> - Individual acts of the regions, South Bohemia, South Moravia, Vysočina - individual acts of the municipalities from the regions South Bohemia, South Moravia, Vysočina - Law No. 218/2000 Sb. On budgetary rules and changes of some relevant Acts - Law No. 205/2000 Sb. On budgetary rules of territorial bodies

9 Competent Authority / Contact Point for SF Grants

Austria	Czech Republic
<p>Niederösterreich: Amt der Niederösterreichischen Landesregierung, Abt. RU2, Landhausplatz 1, A-3109 St. Pölten</p> <p>Tel: ++(43)(2742)-9005-14329</p> <p>Fax: ++(43)(2742)-9005-14170</p> <p>E-mail: martin.kavalek@noel.gv.at</p> <p>Oberösterreich: Amt der Oberösterreichischen Landesregierung, Koordinationsstelle für EU-Regionalpolitik, Annagasse 2, 4010 Linz</p> <p>Tel: ++(43) (732) 7720-14823</p> <p>Fax: ++(43) (732) 7720-14819</p> <p>E-mail: robert.schroetter@ooe.gv.at</p> <p>Wien: Amt der Wiener Landesregierung, MA 27 – EU-Förderungen, Rathaus, A-1080 Wien</p> <p>Tel: ++(43)(1)-4000-82582</p> <p>Fax: ++(43)(1)-4000-7215</p> <p>E-mail: sto@meu.magwien.gv.at</p> <p>In the event of difficulties in deciding who is to be responsible, the Managing Authority (Republic of Austria, Federal Chancellery, Department IV/4, Hohenstaufengasse 3, A-1010 Vienna) shall reach a decision on the assignment of a project to a responsible authority for the co-ordination of the project.</p>	<p>Regional office of Jihomoravský kraj. Žerotínovo nám.3/5, 601 82 Brno tel:++420 541 651 306 Fax: ++420 541 651 349 Email: zatloukal.artur@kr-jihomoravsky.cz</p> <p>Regional office of kraj Vysočina Žižkova 16, 58601 Jihlava Tel:++420 564 602 545 Fax: ++420 564 602 423 Email: moudra.j@kr-vysocina.cz</p> <p>Regional office of Jihočeský kraj U Zimního stadionu 1952/2, 37076 České Budějovice Tel: ++420 386 720 144 Fax: ++420 386 359 011 Email: navara@kraj-jihocesky.cz</p> <p>Centre for Regional Development Vinohradská 46 Praha 2, 120 41 Tel: ++420 221580 201 Fax: ++420 221580 248 Email: ryslavy@crr.cz</p> <p>CRD Regional office for NUTS II South East Obilní trh 7 624 00 Brno tel/fax: ++ 420 541212357 Email: jihovychod@crr.cz</p>

10 Code Numbers for Assistance from the Structural Funds

311-319, 322, 323, 324

11 Desired Effects on the Integration of the Border Region

Integration of the border region by harmonising and optimising cross-border transport services, especially with regard to public and combined transport

Ensuring a better connection of the border region to the Transeuropean Networks

Improving/facilitating neighbourly trade and intensified networking through an improved infrastructure

Preparation and consensus-building (accompanying) cooperation in international transport issues concerning the border area

12 Indicators for Monitoring and Evaluation

Impact Indicators:

(Preparation of the) improvement of cross-border infrastructure, faster and improved transportation links

(Preparation of) links to international transportation routes

Harmonised, integrated planning and use of transportation and telecommunications infrastructure

Contribution to shifting traffic loads (from roads) through the harmonised/integrated use of transportation infrastructure and means

Contribution to establishing and strengthening cross-border logistics

Output Indicators:

Number of research and planning projects providing support for the improvement of rail, road, airport, urban transport, ports, multimodal transport intelligent transport systems;

Number of research and planning projects providing support for the improvement of Information and Communication technology

Number of projects providing IT services and applications for citizens (health, administration, education)

Vocational training and training projects (information society); number of projects providing IT services and applications for SMEs

Cooperation Indicators:

5 phases of crossborder cooperation; planned / achieved

Gender mainstreaming indicators:

the project: has equality between the sexes as its main focus, is positive in terms of male-female equality or is neutral in terms of such equality

Environmental Indicator:

the project: has the environment as its main focus; is environmental friendly; is environmentally neutral

Location Indicator:

the project is: urban; rural; not geographically delimited

Priority Axis 3 / Measure 1:

Support of Cross-border Organisational Structures and Development of Networks

1 Contents / Object of the Measure

The prerequisite for the smooth functioning of a future integrated cross-border region from an economic and social viewpoint is the creation of the necessary institutional conditions to coordinate a broad range of cross-border activities.

On the Czech side it is especially necessary, also with regard to the pending public administration reform of the middle tier, to strengthen and further develop the institutional structures and their capacities at a local and regional level with the aim of raising the region's development resources and level of preparation for EU-accession.

During the bilateral convergence process the regional and spatial development of the cross-border region will also be harmonised and not merely in the area immediately next the border but also at a local and regional level.

Relying on the options listed in the JPD projects with the focus in the following areas will be supported:

(Further) development of organisational structures and thematic co-operation networks (e. g. Euregios, regional management, networks of cities, administration and regional development agencies, thematic networks in health, agriculture, youth, women, social care, integration, civil protection/defence, culture, crime prevention ...)

Developing of urban-hinterlands co-operation projects

Co-ordination and organisation of cross-border projects

Public relations work and information management

Activities to improve the competence of institutions working in the fields of regional and socio-cultural development

2 Goals

Optimising co-operation between associations, unions, administrations and authorities and NGO's in the border regions

Improvement of resources, structures and capacity for preparation, monitoring and evaluation of cross-border projects

Ensuring better acceptance of neighbours, especially with a view to the enlargement of the EU

Development networks to strengthen cross-border integration and intensification of the economic, social and cultural contacts

3 Recipients / Beneficiaries

Austria	Czech Republic
<p>Local and regional authorities</p> <p>Associations</p> <p>Natural and legal persons under private and public law and partnerships under civil law</p> <p>NGOs</p>	<p>Municipalities (associations of the municipalities) – Act No.128/2000 Coll., on Municipalities.</p> <p>Towns – Act No. 128/2000 Coll., on Municipalities.</p> <p>Regions – Act No.129/2000 Coll., on Regions.</p> <p>Organizations established by municipalities and regions (and 100% in their ownership) providing public services – necessary statement from the companies register.</p> <p>Non-governmental non-profit organizations (NGOs) – according to the Government Principles for Providing State Budget Funds to the Non-profit Organizations they are defined as:</p> <ul style="list-style-type: none"> • civic associations – acting under Act No.83/1991 Coll., on the Associations of the Citizens • public-benefit organizations – established under Act No.248/1995 Coll., on Public-benefit Organizations • church corporate bodies – established under Act No.3/2002 Coll., on Church and Religious institutions (insofar as they provide health, education and social services or social protection of children) • Interest association of the corporate bodies established under Act No. 40/1964 Coll., Civil Code (as amended) in order to provide service for the regional development in the border regions with Austria. • foundations and endowment funds – established under Act No.227/1997 Coll., on Foundation and Endowment fund <p>Chambers of commerce and agrarian chambers – Act No. 301/1992 Coll., on the Chamber of Commerce and Agrarian Chamber.</p> <p>State established organization</p>

4 Formal Criteria for EU Co-financing

<p>Economic and organisational capacity of the entity responsible for the project</p> <p>Amount and appropriateness of the costs of the project</p> <p>Secured financing, appropriateness of the ratio between own funds and public assistance (taking into account the possible EU co-financing according to the programme as well as any other national public funds applied for, already granted or promised)</p> <p>Relevant project aim in line with sectoral policy objectives (if required, also including statements of other administrative bodies concerned)</p> <p>Fulfilment of the specific requirements for assistance under INTERREG IIIA – pursuant to the CIP and the Programme Complement (see item no. 5)</p> <p>Compliance with the criteria for ERDF assistance (pursuant to Council Regulation no. 1783/99) and with the Commission Regulation concerning the eligibility of operations</p> <p>Compliance with other relevant EU regulations (subsidy laws, rules for the awarding of public contracts, environmental law, etc.)</p> <p>Observance of the condition that any current business of institutions within the framework of their legal mandate or any activities covered by base subsidies cannot be funded under Interreg IIIA.</p>

5 Specific Criteria for the Project Selection

<p>See chapter 3 of the Programme Complement.</p>

6 Eligible Costs

As a general rule:

Project-related material costs and operating expenses (e.g. organisation and realisation of events)

Personnel costs

Planning costs

Project-related investment costs

Consulting expenses

7 Type and Amount of EU Assistance

Unrecoverable assistance, according to programme 50% at max. for Austria, 75% at max. for Czech Republic

In this connection, it must be observed that the maximum amount of permissible assistance for a specific project according to EU competition law – composed of financial support from EU Structural Funds and national funds – will not be exceeded.

8 Implementation Instruments – Legal Basis

a) Legal basis for the granting of the EU funds

b) Legal basis for the granting of national funds

Austria	Czech Republic
<p>a) Einzelentscheidungen der Bundesländer Niederösterreich, Oberösterreich und Wien</p> <p>b)</p> <ol style="list-style-type: none"> 1. Einzelentscheidungen der Länder Niederösterreich, Oberösterreich und Wien 2. Einzelentscheidungen von Gemeinden in Niederösterreich, Oberösterreich 3. Allgemeine Rahmenrichtlinie für die Gewährung von Förderungen aus Bundesmitteln (BMF.-Z.01 3301/7-II/3/77 vom 5. Mai 1977, geltende Fassung) 4. Einzelentscheidungen des Bundes 5. NÖ Kulturförderungsgesetz 1996. LGBl.5301; Richtlinien für die Förderung nach dem NÖ Kulturförderungsgesetz 1996 	<p>a)</p> <ul style="list-style-type: none"> - Individual acts of the regions, South Bohemia, South Moravia, Vysočina - individual acts of the municipalities from the regions South Bohemia, South Moravia, Vysočina - Law No. 218/2000 Sb. On budgetary rules and changes of some relevant Acts - Law No. 205/2000 Sb. On budgetary rules of territorial bodies <p>b)</p> <ul style="list-style-type: none"> - Individual acts of the regions, South Bohemia, South Moravia, Vysočina - individual acts of the municipalities from the regions South Bohemia, South Moravia, Vysočina - Law No. 218/2000 Sb. On budgetary rules and changes of some relevant Acts - Law No. 205/2000 Sb. On budgetary rules of territorial bodies

9 Competent Authority / Contact Point for SF Grants

Austria	Czech Republic
<p>Niederösterreich: Amt der Niederösterreichischen Landesregierung, Abt. RU2, Landhausplatz 1, A-3109 St. Pölten</p> <p>Tel: ++(43)(2742)-9005-14329</p> <p>Fax: ++(43)(2742)-9005-14170</p> <p>E-mail: martin.kavalek@noel.gv.at</p> <p>Oberösterreich: Amt der Oberösterreichischen Landesregierung, Koordinationsstelle für EU-Regionalpolitik, Annagasse 2, 4010 Linz</p> <p>Tel: ++(43) (732) 7720-14823</p> <p>Fax: ++(43) (732) 7720-14819</p> <p>E-mail: robert.schroetter@ooe.gv.at</p> <p>Wien: Amt der Wiener Landesregierung, MA 27 – EU-Förderungen, Rathaus, A-1080 Wien</p> <p>Tel: ++(43)(1)-4000-82582</p> <p>Fax: ++(43)(1)-4000-7215</p> <p>E-mail: sto@meu.magwien.gv.at</p> <p>In the event of difficulties in deciding who is to be responsible, the Managing Authority (Republic of Austria, Federal Chancellery, Department IV/4, Hohenstaufengasse 3, A-1010 Vienna) shall reach a decision on the assignment of a project to a responsible authority for the co-ordination of the project.</p>	<p>Regional office of Jihomoravský kraj. Žerotínovo nám.3/5, 601 82 Brno tel:++420 541 651 306 Fax: ++420 541 651 349 Email: zatloukal.artur@kr-jihomoravsky.cz</p> <p>Regional office of kraj Vysočina Žižkova 16, 58601 Jihlava Tel:++420 564 602 545 Fax: ++420 564 602 423 Email: moudra.j@kr-vysocina.cz</p> <p>Regional office of Jihočeský kraj U Zimního stadionu 1952/2, 37076 České Budějovice Tel: ++420 386 720 144 Fax: ++420 386 359 011 Email: navara@kraj-jihocesky.cz</p> <p>Centre for Regional Development Vinohradská 46 Praha 2, 120 41 Tel: ++420 221580 201 Fax: ++420 221580 248 Email: ryslavy@crr.cz</p> <p>CRD Regional office for NUTS II South East Obilní trh 7 624 00 Brno tel/fax: ++ 420 541212357 Email: jihovychod@crr.cz</p>

10 Code Numbers for Assistance from the Structural Funds

1642, 1643

11 Desired Effects on the Integration of the Border Region

Creation of cross-border co-operation structures
 Support of projects across the border
 Expanding the location through cross-border integration and utilisation of synergies

12 Indicators for Monitoring and Evaluation

Impact Indicators:

Networking of private and/or public services

To create and expand co-operation networks and structures

Creation and reinforcement of structures for the regular, mutual exchange of information and project collaboration

To create and expand support structures for cross-border projects

Output Indicators:

Number of projects providing support for information networks, SME cooperation networks, development concepts, stimulation and promotional services etc.

Number of projects providing support for regional development plans, concepts and studies, regional management EuRegios etc.

Cooperation Indicators:

5 phases of crossborder cooperation; planned / achieved

Gender mainstreaming indicators:

the project: has equality between the sexes as its main focus, is positive in terms of male-female equality or is neutral in terms of such equality

Environmental Indicator:

the project: has the environment as its main focus; is environmental friendly; is environmentally neutral

Location Indicator:

the project is: urban; rural; not geographically delimited

Priority Axis 3 / Measure 2:

Micro-projects incl. People-to-People Actions and Small Pilots

1 Contents / Object of the Measure

Over the past few decades, "mental borders" have formed in the minds of the border region inhabitants due to interrupted economic, cultural and social relationships. An important foundation for intensifying communication can be achieved via regular contacts in the form of small – often regional and/or subject-specific – projects as well as steps taken in the direction of breaking down resentment and integration. The common experiences from the implementation of the programme to date have shown that integrated (chiefly non-profit orientated) "micro projects" were very helpful for the development of common contacts and project experiences. With this measure, this experience will also be used and further developed in the future.

Relying on the options listed in the JPD projects with the focus in the following areas will be supported:

Support of sustainable small projects in all fields of measures such as qualification, education, women, culture, youth, social and environmental topics, cultural exchange, integration, medicine and health, dialogue-based events, including small pilots and small-scale projects for innovative local community and urban development

Promoting innovative and cross-border small-scale projects (impulse projects) to enhance integration of the population of the border region and preparation, development and monitoring of larger Interreg projects

"People-to-people" projects to enhance cross-border contacts

Further measures in line with the programmes and their objectives that cannot be foreseen at the date hereof

2 Goals

<p>Development networks to strengthen cross-border integration and intensify the economic, social and cultural contacts</p> <p>Strengthening and promoting long-term communication and co-operation in the border region</p> <p>Fostering the social and economic integration of the border regions</p> <p>Intensifying the economic, cultural and social contacts</p> <p>Screening of potential fields of co-operation and first contacts</p> <p>Explanation: Extensive communication and cooperation between citizens and institutions in all areas of economic, social and cultural life on the basis of small-scale projects dedicated to creating a basis of trust as well as an institutional basis for cross-border integration of the border areas represent a favourable precondition for establishing long-term and sustainable cross-border cooperation. Establishment of small projects funds on both sides of the border to support small-scale activities and projects throughout the entire range of measures covered by the programme is intended to stimulate and enhance cross-border cooperation. At the same time, a representative, upstream regional level (e.g. Euregios) is to be offered an opportunity to acquire and improve its knowledge in the field of administration procedures relating to financial support provided by the Structural Funds (as well as, if applicable, national funds).</p> <p>Establishment and enhancement of "people to people" contacts. This refers, in particular, to integration in the border area through cooperation between individual population groups to "eliminate the borders in people's minds".</p> <p>Small projects for preparation, development and monitoring of projects throughout the full range of measures.</p> <p>Transfer of decisions relating to the approval of cross-border projects to a lower level (principle of subsidiarity).</p> <p>Adapting regional structures (e.g. Euregios) to the implementation structures of the Structural Funds programmes so as to ensure that these can implement small-scale innovation measures and Structural Funds programmes.</p> <p>Reducing the workload of decision-taking structures on the programme level (e.g. Steering Committee) in connection with small-regional projects.</p>

3 Recipients / Beneficiaries

Austria	Czech Republic
<p>Local and regional authorities</p> <p>Associations</p> <p>Natural and legal persons under private and public law and partnerships under civil law</p> <p>NGOs</p>	<p>Municipalities (associations of the municipalities) – Act No.128/2000 Coll., on Municipalities.</p> <p>Towns – Act No. 128/2000 Coll., on Municipalities.</p> <p>Regions – Act No.129/2000 Coll., on Regions.</p> <p>Organizations established by municipalities and regions (and 100% in their ownership) providing public services – necessary statement from the companies register.</p> <p>Non-governmental non-profit organizations (NGOs) – according to the Government Principles for Providing State Budget Funds to the Non-profit Organizations they are defined as:</p> <ul style="list-style-type: none"> • civic associations – acting under Act No.83/1991 Coll., on the Associations of the Citizens • public-benefit organizations – established under Act No.248/1995 Coll., on Public-benefit Organizations • church corporate bodies – established under Act No.3/2002 Coll., on Church and Religious institutions (insofar as they provide health, education and social services or social protection of children) • Interest association of the corporate bodies established under Act No. 40/1964 Coll., Civil Code (as amended) in order to provide service for the regional development in the border regions with Austria. • foundations and endowment funds – established under Act No.227/1997 Coll., on Foundation and Endowment fund <p>Schools and education institutions that are not established by municipalities, regions and state</p> <p>Chambers of commerce and agrarian chambers – Act No. 301/1992 Coll., on the Chamber of Commerce and Agrarian Chamber.</p> <p>State established organization</p>

4 Formal Criteria for EU Co-financing

Economic and organisational capacity of the entity responsible for the project

Amount and appropriateness of the costs of the project

Secured financing, appropriateness of the ratio between own funds and public assistance (taking into account the possible EU co-financing according to the programme as well as any other national public funds applied for, already granted or promised)

Relevant project aim in line with sectoral policy objectives (if required, also including statements of other administrative bodies concerned)

Fulfilment of the specific requirements for assistance under INTERREG IIIA – pursuant to the CIP and the Programme Complement (see item no. 5)

Compliance with the criteria for ERDF assistance (pursuant to Council Regulation no. 1783/99) and with the Commission Regulation concerning the eligibility of operations

Compliance with other relevant EU regulations (subsidy laws, rules for the awarding of public contracts, environmental law, etc.)

Observance of the condition that any current business of institutions within the framework of their legal mandate or any activities covered by base subsidies cannot be funded under Interreg IIIA.

5 Specific Criteria for the Project Selection

See chapter 3 of the Programme Complement.

6 Eligible Costs

As a general rule:

Project-related material costs and operating expenses (e.g. organising and holding events)

Personnel costs

Planning costs

Project-related investment costs

Consulting expenses

7 Type and Amount of EU Assistance

Unrecoverable assistance, according to programme 50% at max. for Austria, 75% at max. for Czech Republic

In this connection, it must be observed that the maximum amount of permissible assistance for a specific project according to EU competition law – composed of financial support from EU Structural Funds and national funds – will not be exceeded.

8 Implementation Instruments – Legal Basis

a) Legal basis for the granting of the EU funds

b) Legal basis for the granting of national funds

Austria	Czech Republic
<p>a) Einzelentscheidungen der Bundesländer Niederösterreich, Oberösterreich und Wien</p> <p>b)</p> <ol style="list-style-type: none"> 1. Einzelentscheidungen der Länder Niederösterreich, Oberösterreich und Wien 2. Einzelentscheidungen von Gemeinden in Niederösterreich, Oberösterreich 3. Allgemeine Rahmenrichtlinie für die Gewährung von Förderungen aus Bundesmitteln (BMF.-Z.01 3301/7-II/3/77 vom 5. Mai 1977, geltende Fassung) 4. Einzelentscheidungen des Bundes 5. NÖ Kulturförderungsgesetz 1996. LGBl.5301; Richtlinien für die Förderung nach dem NÖ Kulturförderungsgesetz 1996 	<p>a)</p> <ul style="list-style-type: none"> - Individual acts of the regions, South Bohemia, South Moravia, Vysočina - individual acts of the municipalities from the regions South Bohemia, South Moravia, Vysočina - Law No. 218/2000 Sb. On budgetary rules and changes of some relevant Acts - Law No. 205/2000 Sb. On budgetary rules of territorial bodies <p>b)</p> <ul style="list-style-type: none"> - Individual acts of the regions, South Bohemia, South Moravia, Vysočina - individual acts of the municipalities from the regions South Bohemia, South Moravia, Vysočina - Law No. 218/2000 Sb. On budgetary rules and changes of some relevant Acts - Law No. 205/2000 Sb. On budgetary rules of territorial bodies

9 Competent Authority / Contact Point for SF Grants

Austria	Czech Republic
<p>Niederösterreich: Amt der Niederösterreichischen Landesregierung, Abt. RU2, Landhausplatz 1, A-3109 St. Pölten</p> <p>Tel: ++(43)(2742)-9005-14329</p> <p>Fax: ++(43)(2742)-9005-14170</p> <p>E-mail: martin.kavalek@noel.gv.at</p> <p>Oberösterreich: Amt der Oberösterreichischen Landesregierung, Koordinationsstelle für EU-Regionalpolitik, Annagasse 2, 4010 Linz</p> <p>Tel: ++(43) (732) 7720-14823</p> <p>Fax: ++(43) (732) 7720-14819</p> <p>E-mail: robert.schroetter@ooe.gv.at</p> <p>Wien: Amt der Wiener Landesregierung, MA 27 – EU-Förderungen, Rathaus, A-1080 Wien</p> <p>Tel: ++(43)(1)-4000-82582</p> <p>Fax: ++(43)(1)-4000-7215</p> <p>E-mail: sto@meu.magwien.gv.at</p> <p>In the event of difficulties in deciding who is to be responsible, the Managing Authority (Republic of Austria, Federal Chancellery, Department IV/4, Hohenstaufengasse 3, A-1010 Vienna) shall reach a decision on the assignment of a project to a responsible authority for the co-ordination of the project.</p>	<p>Regional office of Jihomoravský kraj. Žerotínovo nám.3/5, 601 82 Brno tel:++420 541 651 306 Fax: ++420 541 651 349 Email: zatloukal.artur@kr-jihomoravsky.cz</p> <p>Regional office of kraj Vysočina Žižkova 16, 58601 Jihlava Tel:++420 564 602 545 Fax: ++420 564 602 423 Email: moudra.j@kr-vysocina.cz</p> <p>Regional office of Jihočeský kraj U Zimního stadionu 1952/2, 37076 České Budějovice Tel: ++420 386 720 144 Fax: ++420 386 359 011 Email: navara@kraj-jihocesky.cz</p> <p>Centre for Regional Development Vinohradská 46 Praha 2, 120 41 Tel: ++420 221580 201 Fax: ++420 221580 248 Email: ryslavy@crr.cz</p> <p>CRD Regional office for NUTS II South East Obilní trh 7 624 00 Brno tel/fax: ++ 420 541212357 Email: jihovychod@crr.cz</p>

10 Code Numbers for Assistance from the Structural Funds

1644

11 Desired Effects on the Integration of the Border Region

Establishing cross-border contacts of long-term use

Development and implementation of innovative ideas and measures by granting funds in a non-bureaucratic manner

Intensifying and supporting the cross-border integration process, especially in the social and cultural sphere, in particular with regard to the people and at a sub-regional level

12 Indicators for Monitoring and Evaluation

Impact Indicators:

Reduction of mental barriers through the creation of a sustainable and broad co-operation base

Creation of sustainable co-operation structures

Development of new topics such as the first testing of new forms of collaboration in the meaning of pilot projects

Contribution to strategic project development

Output Indicators:

Number of Micro projects incl. people to people actions and small pilots

Cooperation Indicators:

5 phases of crossborder cooperation; planned / achieved

Gender mainstreaming indicators:

the project: has equality between the sexes as its main focus, is positive in terms of male-female equality or is neutral in terms of such equality

Environmental Indicator:

the project: has the environment as its main focus; is environmental friendly; is environmentally neutral

Location Indicator:

the project is: urban; rural; not geographically delimited

Priority Axis 4 / Measure 1:

Development of Regional Labour Markets and Social Systems within the Context of EU Enlargement

1 Contents / Object of the Measure

Labour market relations and development processes in the border region are determined on the one hand by the economic structural conditions and on the other by the existing regional disparities within the region and especially in the cross-border context. The markedly divergent prosperity and wage levels have sparked intensive one-sided cross-border commuting and migration movements from the neighbouring countries. Brain drain in the neighbouring states and social tension in Austria are the result.

The first measure mainly targets the activities of the labour market policy actors, while measure 2 mainly affects actors in the education sector. The allocation of complex projects to one or other of the measures is decided on the main objective of the planned projects.

Relying on the options listed in the JPD projects with the focus in the following areas will be supported:

Cooperation between institutions in the field of labour market policy, always emphasizing equal opportunities for men and women

Provision and dissemination of information relating to differences between legal systems in connection with cross-border labour markets, economic, education and social systems

Cross-border monitoring

Transfer of know-how in the field of labour market policy through seminars and experts' meetings

Development of regulatory systems in order to establish socially integrated cross-border labour market relations

Establishment of a joint labour-market monitoring and information system (location of jobs, job placement...)

Cross-border cooperation to improve standards in the field of labour law and social law

Studies and analyses

Information and special events (e.g. manuals)

Development and establishment of networks, cooperation schemes in the field of employment, cooperation between labour market institutions, groups representing different stakeholders, etc.

Establishment of EURES partnership

Establishment of a network for neighbourly services or services in other fields pursuant to the LDEI (European Strategy for Encouraging Local Development and Employment Initiatives– Commission Communication COM(95) 273, OJ C 265, 12.10.1995)

2 Goals

<p>Establishment of cross-border labour market relationships</p> <p>Intensification of co-operation between the labour-market institutions</p> <p>Integration of cross-border strategies into the TEPs</p> <p>Preparation of framework conditions for properly functioning cross-border labour market relationships</p> <p>Improvement of cross-border information on offer and demand in the labour market</p> <p>Removal of obstacles in the context of economic, education and social systems and harmonisation of standards in labour and social law</p>

3 Recipients / Beneficiaries

Austria	Czech Republic
<p>Local and regional authorities</p> <p>Associations</p> <p>Natural and legal persons under private and public law and partnerships under civil law</p> <p>NGOs</p>	<p>Municipalities (associations of the municipalities) – Act No.128/2000 Coll., on Municipalities.</p> <p>Towns – Act No. 128/2000 Coll., on Municipalities.</p> <p>Regions – Act No.129/2000 Coll., on Regions.</p> <p>Organizations established by municipalities and regions (and 100% in their ownership) providing public services – necessary statement from the companies register.</p> <p>Non-governmental non-profit organizations (NGOs) – according to the Government Principles for Providing State Budget Funds to the Non-profit Organizations they are defined as:</p> <ul style="list-style-type: none"> • civic associations – acting under Act No.83/1991 Coll., on the Associations of the Citizens • public-benefit organizations – established under Act No.248/1995 Coll., on Public-benefit Organizations • church corporate bodies – established under Act No.3/2002 Coll., on Church and Religious institutions (insofar as they provide health, education and social services or social protection of children) • Interest association of the corporate bodies established under Act No. 40/1964 Coll., Civil Code (as amended) in order to provide service for the regional development in the border regions with Austria. • foundations and endowment funds – established under Act No.227/1997 Coll., on Foundation and Endowment fund <p>Schools and education institutions that are not established by municipalities, regions and state</p> <p>Chambers of commerce and agrarian chambers – Act No. 301/1992 Coll., on the Chamber of Commerce and Agrarian Chamber.</p> <p>State established organization</p>

4 Formal Criteria for EU Co-financing

Economic and organisational capacity of the entity responsible for the project

Amount and appropriateness of the costs of the project

Secured financing, appropriateness of the ratio between own funds and public assistance (taking into account the possible EU co-financing according to the programme as well as any other national public funds applied for, already granted or promised)

Relevant project goal in line with sectoral policy objectives (if required, also including statements of other administrative bodies concerned)

Fulfilment of the specific requirements for assistance under INTERREG IIIA – pursuant to the CIP and the Programme Complement (see item no. 5)

Compliance with the criteria for ERDF assistance (pursuant to Council Regulation no. 1783/99) and with the Commission Regulation concerning the eligibility of operations

Compliance with other relevant EU regulations (subsidy laws, rules for the awarding of public contracts, environmental law, etc.)

Observance of the condition that any current business of institutions within the framework of their legal mandate or any activities covered by base subsidies cannot be funded under Interreg IIIA.

5 Specific Criteria for the Project Selection

See chapter 3 of the Programme Complement.

6 Eligible Costs

As a general rule, the following can be funded:

- Project-related material costs and operating expenses
- Personnel costs
- Planning costs
- Project-related investment costs
- Consulting expenses

7 Type and Amount of EU Assistance

Unrecoverable assistance, according to programme 50% at max. for Austria, 75% at max. for Czech Republic

In this connection, it must be observed that the maximum amount of permissible assistance for a specific project according to EU competition law – composed of financial support from EU Structural Funds and national funds – will not be exceeded.

8 Implementation Instruments – Legal Basis

a) Legal basis for the granting of the EU funds

b) Legal basis for the granting of national funds

Austria	Czech Republic
<p>a) Einzelentscheidungen der Bundesländer Niederösterreich, Oberösterreich und Wien</p> <p>b) 1. Einzelentscheidungen der Länder Niederösterreich, Oberösterreich und Wien 2. Einzelentscheidungen von Gemeinden in Niederösterreich, Oberösterreich 3. Allgemeine Rahmenrichtlinie für die Gewährung von Förderungen aus Bundesmitteln (BMF.-Z.01 3301/7-II/3/77 vom 5. Mai 1977, geltende Fassung) 4. Einzelentscheidungen des Bundes</p>	<p>a)</p> <ul style="list-style-type: none"> - Individual acts of the regions, South Bohemia, South Moravia, Vysočina - individual acts of the municipalities from the regions South Bohemia, South Moravia, Vysočina - Law No. 218/2000 Sb. On budgetary rules and changes of some relevant Acts - Law No. 205/2000 Sb. On budgetary rules of territorial bodies <p>b)</p> <ul style="list-style-type: none"> - Individual acts of the regions, South Bohemia, South Moravia, Vysočina - individual acts of the municipalities from the regions South Bohemia, South Moravia, Vysočina - Law No. 218/2000 Sb. On budgetary rules and changes of some relevant Acts - Law No. 205/2000 Sb. On budgetary rules of territorial bodies

9 Competent Authority / Contact Point for SF Grants

Austria	Czech Republic
<p>Niederösterreich: Amt der Niederösterreichischen Landesregierung, Abt. RU2, Landhausplatz 1, A-3109 St. Pölten</p> <p>Tel: ++(43)(2742)-9005-14329</p> <p>Fax: ++(43)(2742)-9005-14170</p> <p>E-mail: martin.kavalek@noel.gv.at</p> <p>Oberösterreich: Amt der Oberösterreichischen Landesregierung, Koordinationsstelle für EU-Regionalpolitik, Annagasse 2, 4010 Linz</p> <p>Tel: ++(43) (732) 7720-14823</p> <p>Fax: ++(43) (732) 7720-14819</p> <p>E-mail: robert.schroetter@ooe.gv.at</p> <p>Wien: Amt der Wiener Landesregierung, MA 27 – EU-Förderungen, Rathaus, A-1080 Wien</p> <p>Tel: ++(43)(1)-4000-82582</p> <p>Fax: ++(43)(1)-4000-7215</p> <p>E-mail: sto@meu.magwien.gv.at</p> <p>In the event of difficulties in deciding who is to be responsible, the Managing Authority (Republic of Austria, Federal Chancellery, Department IV/4, Hohenstaufengasse 3, A-1010 Vienna) shall reach a decision on the assignment of a project to a responsible authority for the co-ordination of the project.</p>	<p>Regional office of Jihomoravský kraj. Žerotínovo nám.3/5, 601 82 Brno tel:++420 541 651 306 Fax: ++420 541 651 349 Email: zatloukal.artur@kr-jihomoravsky.cz</p> <p>Regional office of kraj Vysočina Žižkova 16, 58601 Jihlava Tel:++420 564 602 545 Fax: ++420 564 602 423 Email: moudra.j@kr-vysocina.cz</p> <p>Regional office of Jihočeský kraj U Zimního stadionu 1952/2, 37076 České Budějovice Tel: ++420 386 720 144 Fax: ++420 386 359 011 Email: navara@kraj-jihocesky.cz</p> <p>Centre for Regional Development Vinohradská 46 Praha 2, 120 41 Tel: ++420 221580 201 Fax: ++420 221580 248 Email: ryslavy@crr.cz</p> <p>CRD Regional office for NUTS II South East Obilní trh 7 624 00 Brno tel/fax: ++ 420 541212357 Email: jihovychod@crr.cz</p>

10 Code Numbers for Assistance from the Structural Funds

21, 22, 24, 323, 361, 362

11 Desired Effects on the Integration of the Border Region

Overcoming of the negative effects resulting from the disparities resulting from regional disparities in the labour market and economy between the border regions

Establishment of joint institutions and information systems as a prerequisite for the development of a cross-border integrated labour market

12 Indicators for Monitoring and Evaluation

Impact Indicators:

Reduction of organisational and legal barriers, and of information deficits

Building up and intensification of collaboration between the labour market and social policy institutions as well as social partners

Development of new, cross-border-adjusted occupational fields and qualifications

Contribution to the development of instruments and cross-border labour market and social policy/development and observation

Development of new job opportunities (creation of regional centres of core competencies)

Output Indicators:

Number of projects supporting studies, information systems etc. dealing with labour market policy or social integration

Number of cooperation projects, networks of SMEs or public administration dealing with labour market policy or social integration

Number of vocational training or training projects; number of trainees

Number of projects providing IT services and applications for citizens (health, administration, education)

Number of centres for disabled people supported

Number of kindergartens supported

Cooperation Indicators:

5 phases of crossborder cooperation; planned / achieved

Gender mainstreaming indicators:

the project: has equality between the sexes as its main focus, is positive in terms of male-female equality or is neutral in terms of such equality

Environmental Indicator:

the project: has the environment as its main focus; is environmental friendly; is environmentally neutral

Location Indicator:

the project is: urban; rural; not geographically delimited

Priority Axis 4 / Measure 2:

Development of Co-operation and Infrastructure in the Fields of Education, Training and Science

1 Contents / Object of the Measure

The variety of institutions in the area of education, and also in social and science areas are an excellent setting for intensifying cooperation projects to develop the range of offerings in education and training, and in sharing experiences. According to the scope of the European Social Fund (ESF) Regulation, all age groups and educational areas are to be addressed. Assistance will be given in particular to those age groups for whom the training coincides with the regional development priority.

Relying on the options listed in the JPD projects with the focus in the following areas will be supported:

Development and implementation of joint education, further education and qualification programmes with relevance to the regional development and the cross-border strategy (e.g. environment, tourism, new media, social services, languages courses etc.)

Improvement of education, qualification and research infrastructure

Creation and further development of cross-border information services and centres providing offers in the field of education and qualification

Support programmes for the establishment of vocational and re-qualification centres

Exchange programmes on an institutional level

Development of multi-lingual materials for teaching

Elaboration and implementation of studies and analyses in the fields of education, further education and qualification, science and research development

Supporting cooperation and transfers of know-how

Development of reference systems for education and qualification

Exchanges of pupils, students and teachers to the extent that such exchange projects represent the beginning of sustainable cooperation rather than non-recurring (mutual) activities.

Promotion of cross-border projects organised by and for minorities (exchange, support, qualification and research projects) as well as support to marginalised groups

Creation of joint counselling structures

Establishment of networks, organising seminars, special events and platforms for dialogue

Public relations work

2 Goals

Co-ordination in the field of education and qualification

Preparation of the region for the enlargement of the EU in education, further education and training

Harmonisation of labour-force profile (qualification level) with conditions and requirements of the EU countries

Intensification of co-operation between institutions of education and qualification (schools, institutions of adult education...)

Strengthening the research exchange

Joint support/offers in the field of education, qualification and information

3 Recipients / Beneficiaries

Austria	Czech Republic
<p>Local and regional authorities</p> <p>Associations</p> <p>Natural and legal persons under private and public law and partnerships under civil law</p> <p>NGOs</p>	<p>Municipalities (associations of the municipalities) – Act No.128/2000 Coll., on Municipalities.</p> <p>Towns – Act No. 128/2000 Coll., on Municipalities.</p> <p>Regions – Act No.129/2000 Coll., on Regions.</p> <p>Organizations established by municipalities and regions (and 100% in their ownership) providing public services – necessary statement from the companies register.</p> <p>Non-governmental non-profit organizations (NGOs) – according to the Government Principles for Providing State Budget Funds to the Non-profit Organizations they are defined as:</p> <ul style="list-style-type: none"> • civic associations – acting under Act No.83/1991 Coll., on the Associations of the Citizens • public-benefit organizations – established under Act No.248/1995 Coll., on Public-benefit Organizations • church corporate bodies – established under Act No.3/2002 Coll., on Church and Religious institutions (insofar as they provide health, education and social services or social protection of children) • Interest association of the corporate bodies established under Act No. 40/1964 Coll., Civil Code (as amended) in order to provide service for the regional development in the border regions with Austria. • foundations and endowment funds – established under Act No.227/1997 Coll., on Foundation and Endowment fund <p>Schools and education institutions that are not established by municipalities, regions and state</p> <p>Chambers of commerce and agrarian chambers – Act No. 301/1992 Coll., on the Chamber of Commerce and Agrarian Chamber.</p> <p>State established organization</p>

4 Formal Criteria for EU Co-financing

Economic and organisational capacity of the entity responsible for the project

Amount and appropriateness of the costs of the project

Secured financing, appropriateness of the ratio between own funds and public assistance (taking into account the possible EU co-financing according to the programme as well as any other national public funds applied for, already granted or promised)

Relevant project aim in line with sectoral policy objectives (if required, also including statements of other administrative bodies concerned)

Fulfilment of the specific requirements for assistance under INTERREG IIIA – pursuant to the CIP and the Programme Complement (see item no. 5)

Compliance with the criteria for ERDF assistance (pursuant to Council Regulation no. 1783/99) and with the Commission Regulation concerning the eligibility of operations

Compliance with other relevant EU regulations (subsidy laws, rules for the awarding of public contracts, environmental law, etc.)

Observance of the condition that any current business of institutions within the framework of their legal mandate or any activities covered by base subsidies cannot be funded under Interreg IIIA.

5 Specific Criteria for the Project Selection

See chapter 3 of the Programme Complement.

6 Eligible Costs

As a general rule:

Project-related material costs and operating expenses

Personnel costs

Planning costs

Project-related investment costs (e.g. construction, infrastructure, development, machinery, hard/software)

Consulting expenses

7 Type and Amount of EU Assistance

Unrecoverable assistance, according to programme 50% at max. for Austria, 75% at max. for Czech Republic

In this connection, it must be observed that the maximum amount of permissible assistance for a specific project according to EU competition law – composed of financial support from EU Structural Funds and national funds – will not be exceeded.

8 Implementation Instruments – Legal Basis

a) Legal basis for the granting of the EU funds

b) Legal basis for the granting of national funds

Austria	Czech Republic
<p>a) Einzelentscheidungen der Bundesländer Niederösterreich, Oberösterreich und Wien</p> <p>b)</p> <ol style="list-style-type: none"> 1. Einzelentscheidungen der Länder Niederösterreich, Oberösterreich und Wien 2. Einzelentscheidungen von Gemeinden in Niederösterreich, Oberösterreich 3. Allgemeine Rahmenrichtlinie für die Gewährung von Förderungen aus Bundesmitteln (BMF.-Z.01 3301/7-II/3/77 vom 5. Mai 1977, geltende Fassung) 4. Einzelentscheidungen des Bundes 5. NÖ Kulturförderungsgesetz 1996. LGBl.5301; Richtlinien für die Förderung nach dem NÖ Kulturförderungsgesetz 1996 6. Gesetz über die Förderung der Erwachsenenbildung und des Volksbüchereiwesens aus Landesmitteln (LGBl. 5300) 	<p>a)</p> <ul style="list-style-type: none"> - Individual acts of the regions, South Bohemia, South Moravia, Vysočina - individual acts of the municipalities from the regions South Bohemia, South Moravia, Vysočina - Law No. 218/2000 Sb. On budgetary rules and changes of some relevant Acts - Law No. 205/2000 Sb. On budgetary rules of territorial bodies <p>b)</p> <ul style="list-style-type: none"> - Individual acts of the regions, South Bohemia, South Moravia, Vysočina - individual acts of the municipalities from the regions South Bohemia, South Moravia, Vysočina - Law No. 218/2000 Sb. On budgetary rules and changes of some relevant Acts - Law No. 205/2000 Sb. On budgetary rules of territorial bodies

9 Competent Authority / Contact Point for SF Grants

Austria	Czech Republic
<p>Niederösterreich: Amt der Niederösterreichischen Landesregierung, Abt. RU2, Landhausplatz 1, A-3109 St. Pölten</p> <p>Tel: ++(43)(2742)-9005-14329</p> <p>Fax: ++(43)(2742)-9005-14170</p> <p>E-mail: martin.kavalek@noel.gv.at</p> <p>Oberösterreich: Amt der Oberösterreichischen Landesregierung, Koordinationsstelle für EU-Regionalpolitik, Annagasse 2, 4010 Linz</p> <p>Tel: ++(43) (732) 7720-14823</p> <p>Fax: ++(43) (732) 7720-14819</p> <p>E-mail: robert.schroetter@ooe.gv.at</p> <p>Wien: Amt der Wiener Landesregierung, MA 27 – EU-Förderungen, Rathaus, A-1080 Wien</p> <p>Tel: ++(43)(1)-4000-82582</p> <p>Fax: ++(43)(1)-4000-7215</p> <p>E-mail: sto@meu.magwien.gv.at</p> <p>In the event of difficulties in deciding who is to be responsible, the Managing Authority (Republic of Austria, Federal Chancellery, Department IV/4, Hohenstaufengasse 3, A-1010 Vienna) shall reach a decision on the assignment of a project to a responsible authority for the co-ordination of the project.</p>	<p>Regional office of Jihomoravský kraj. Žerotínovo nám.3/5, 601 82 Brno tel:++420 541 651 306 Fax: ++420 541 651 349 Email: zatloukal.artur@kr-jihomoravsky.cz</p> <p>Regional office of kraj Vysočina Žižkova 16, 58601 Jihlava Tel:++420 564 602 545 Fax: ++420 564 602 423 Email: moudra.j@kr-vysocina.cz</p> <p>Regional office of Jihočeský kraj U Zimního stadionu 1952/2, 37076 České Budějovice Tel: ++420 386 720 144 Fax: ++420 386 359 011 Email: navara@kraj-jihocesky.cz</p> <p>Centre for Regional Development Vinohradská 46 Praha 2, 120 41 Tel: ++420 221580 201 Fax: ++420 221580 248 Email: ryslavy@crr.cz</p> <p>CRD Regional office for NUTS II South East Obilní trh 7 624 00 Brno tel/fax: ++ 420 541212357 Email: jihovychod@crr.cz</p>

10 Code Numbers for Assistance from the Structural Funds

23+24+181+324, 323

11 Desired Effects on the Integration of the Border Region

Improvement of the infrastructure, enhancing, expanding and co-ordinating cross-border educational and qualification offers, tuned to regional needs

Preparation of the border region for the EU enlargement process and the necessary preconditions for a convergence of the region, in particular in the sector of science and education

12 Indicators for Monitoring and Evaluation

Impact Indicators:

Ongoing collaboration and exchange of information between education and science institutions, creation of co-operation structures

Development/implementation of education and qualification modules with a cross-border focus and multi-/dual lingual educational programmes and teaching materials

Intensification of scientific co-operation and exchange

Contribution to the development of reference systems for education and qualification

Establishment and further development of infrastructure (education, qualification, science & research) with a cross-border character

Output Indicators:

Number of vocational training or training projects (information society); number of trainees

Number of projects providing IT services and applications for citizens (health, administration, education)

Cooperation Indicators:

5 phases of crossborder cooperation; planned / achieved

Gender mainstreaming indicators:

the project: has equality between the sexes as its main focus, is positive in terms of male-female equality or is neutral in terms of such equality

Environmental Indicator:

the project: has the environment as its main focus; is environmental friendly; is environmentally neutral

Location Indicator:

the project is: urban; rural; not geographically delimited

Priority Axis 5 / Measure 1:

Resource management, Technical Infrastructure and Renewable Energy Supply

1 Contents / Object of the Measure

While the infrastructure in Austria is secured at a relatively high level as regards water, waste water disposal and waste management, on the Czech side there are substantial deficiencies. The expansion and modernisation of this area is of great importance as technical infrastructure standards are closely related to the development of business locations.

In Austria, competence has been built up over the past few years in technology and process development (urban and environmental technologies) with low resource exploitation and keeping emissions low; now this needs to be implemented in concrete cross-border projects.

Relying on the options listed in the JPD projects with the focus in the following areas will be supported:

- Environment and energy studies and schemes, environmental monitoring, ecological research, renewable raw materials, renewable energies and energy efficiency
- Supporting the utilisation of renewable raw materials and energies
- Application of environmentally benign technologies and processes using renewable energies and taking into account the need to ensure greater energy efficiency
- Preliminary studies, studies and pilot processes as well as provision of support in the field of the design of water management facilities for settlements, waste management and air pollution and the construction, interlinking and modernisation of supply and disposal infrastructure
- Studies and pilot projects in the field of water management
- Improvement of the environmental situation in the border region and/or in connection with cross-border problems
- Forest soil rehabilitation
- Public relations work and enhanced public awareness
- Setting up of a fund for environment and technology for enterprises acting across the border in the field of environmental protection, energy efficiency and renewable energy resources

2 Goals

<p>Intensified utilisation of renewable energy</p> <p>Optimal use of the existing resources</p> <p>Reduction and prevention of cross-border environmental impacts (water, air, soil) and rehabilitation of ecosystems that have already suffered damage</p> <p>Increased cross-border cooperation in the fields of environmental protection, environmental research and environmental management</p> <p>Increasing environmental awareness, development of efficient education and awareness building measures</p> <p>Strengthening and support of enterprises acting across the border in the field of environmental protection, energy efficiency and renewable energy resources and sustainable improvement of the environmental situation in the border region</p>

3 Recipients / Beneficiaries

Austria	Czech Republic
<p>Local and regional authorities</p> <p>Associations</p> <p>Natural and legal persons under private and public law and partnerships under civil law</p> <p>NGOs</p>	<p>Municipalities (associations of the municipalities) – Act No.128/2000 Coll., on Municipalities.</p> <p>Towns – Act No. 128/2000 Coll., on Municipalities.</p> <p>Regions – Act No.129/2000 Coll., on Regions.</p> <p>Organizations established by municipalities and regions (and 100% in their ownership) providing public services – necessary statement from the companies register.</p> <p>Non-governmental non-profit organizations (NGOs) – according to the Government Principles for Providing State Budget Funds to the Non-profit Organizations they are defined as:</p> <ul style="list-style-type: none"> • civic associations – acting under Act No.83/1991 Coll., on the Associations of the Citizens • public-benefit organizations – established under Act No.248/1995 Coll., on Public-benefit Organizations • church corporate bodies – established under Act No.3/2002 Coll., on Church and Religious institutions (insofar as they provide health, education and social services or social protection of children) • Interest association of the corporate bodies established under Act No. 40/1964 Coll., Civil Code (as amended) in order to provide service for the regional development in the border regions with Austria. • foundations and endowment funds – established under Act No.227/1997 Coll., on Foundation and Endowment fund <p>Chambers of commerce and agrarian chambers – Act No. 301/1992 Coll., on the Chamber of Commerce and Agrarian Chamber.</p> <p>State established organization</p>

4 Formal Criteria for EU Co-financing

Economic and organisational capacity of the entity responsible for the project

Amount and appropriateness of the costs of the project

Secured financing, appropriateness of the ratio between own funds and public assistance (taking into account the possible EU co-financing according to the programme as well as any other national public funds applied for, already granted or promised)

Relevant project aim in line with sectoral policy objectives (if required, also including statements of other administrative bodies concerned)

Fulfilment of the specific requirements for assistance under INTERREG IIIA – pursuant to the CIP and the Programme Complement (see item no. 5)

Compliance with the criteria for ERDF assistance (pursuant to Council Regulation no. 1783/99) and with the Commission Regulation concerning the eligibility of operations

Compliance with other relevant EU regulations (subsidy laws, rules for the awarding of public contracts, environmental law, etc.)

Observance of the condition that any current business of institutions within the framework of their legal mandate or any activities covered by base subsidies cannot be funded under Interreg IIIA.

5 Specific Criteria for the Project Selection

See chapter 3 of the Programme Complement.

6 Eligible Costs

As a general rule:

Project-related material costs and operating expenses

Personnel costs

Planning costs

Project-related investment costs (e.g. construction, infrastructure, development, machinery, hard/software)

Consulting expenses

7 Type and Amount of EU Assistance

Unrecoverable assistance, according to programme 50% at max. for Austria, 75% at max. for Czech Republic

In this connection, it must be observed that the maximum amount of permissible assistance for a specific project according to EU competition law – composed of financial support from EU Structural Funds and national funds – will not be exceeded.

Art. 29 (4) a), b)

no infrastructures which are associated with considerable net earnings

no investments in enterprises provided

8 Implementation Instruments – Legal Basis

a) Legal basis for the granting of the EU funds

b) Legal basis for the granting of national funds

Austria	Czech Republic
<p>a) Einzelentscheidungen der Bundesländer Niederösterreich, Oberösterreich und Wien</p> <p>b)</p> <ol style="list-style-type: none"> 1. Einzelentscheidungen der Länder Niederösterreich, Oberösterreich und Wien 2. Einzelentscheidungen von Gemeinden in Niederösterreich, Oberösterreich 3. Allgemeine Rahmenrichtlinie für die Gewährung von Förderungen aus Bundesmitteln (BMF.-Z.01 3301/7-II/3/77 vom 5. Mai 1977, geltende Fassung) 4. Einzelentscheidungen des Bundes <p>Einzelentscheidung</p> <ul style="list-style-type: none"> - Fernwärmeförderungsgesetz, Bundesgesetzblatt 640/82 in der dzt. Gel. F. - Wasserbautenförderungsgesetz 1985, Bundesgesetzblatt 148/1985 in der dzt. gel. F. - Wasserrechtsgesetz 1959, Bundesgesetzblatt 1959/215 in der dzt. Gel. F. - Richtlinien für die Bundeswasserbauverwaltung <ol style="list-style-type: none"> 4. Öko Business Plan der Stadt Wien (Zuschüsse, de-minimis) 5. Innovations- und Technologieförderung der Stadt Wien (Zuschüsse, notifiziert FTE) 6. Umwelt- und Technologieförderungen der Stadt Wien (Zuschüsse, Laufzeit von 1.3.2001 bis auf Widerruf, de-minimis) 	<p>a)</p> <ul style="list-style-type: none"> - Individual acts of the regions, South Bohemia, South Moravia, Vysočina - individual acts of the municipalities from the regions South Bohemia, South Moravia, Vysočina - Law No. 218/2000 Sb. On budgetary rules and changes of some relevant Acts - Law No. 205/2000 Sb. On budgetary rules of territorial bodies <p>b)</p> <ul style="list-style-type: none"> - Individual acts of the regions, South Bohemia, South Moravia, Vysočina - individual acts of the municipalities from the regions South Bohemia, South Moravia, Vysočina - Law No. 218/2000 Sb. On budgetary rules and changes of some relevant Acts - Law No. 205/2000 Sb. On budgetary rules of territorial bodies

9 Competent Authority / Contact Point for SF Grants

Austria	Czech Republic
<p>Niederösterreich: Amt der Niederösterreichischen Landesregierung, Abt. RU2, Landhausplatz 1, A-3109 St. Pölten</p> <p>Tel: ++(43)(2742)-9005-14329</p> <p>Fax: ++(43)(2742)-9005-14170</p> <p>E-mail: martin.kavalek@noel.gv.at</p> <p>Oberösterreich: Amt der Oberösterreichischen Landesregierung, Koordinationsstelle für EU-Regionalpolitik, Annagasse 2, 4010 Linz</p> <p>Tel: ++(43) (732) 7720-14823</p> <p>Fax: ++(43) (732) 7720-14819</p> <p>E-mail: robert.schroetter@ooe.gv.at</p> <p>Wien: Amt der Wiener Landesregierung, MA 27 – EU-Förderungen, Rathaus, A-1080 Wien</p> <p>Tel: ++(43)(1)-4000-82582</p> <p>Fax: ++(43)(1)-4000-7215</p> <p>E-mail: sto@meu.magwien.gv.at</p> <p>In the event of difficulties in deciding who is to be responsible, the Managing Authority (Republic of Austria, Federal Chancellery, Department IV/4, Hohenstaufengasse 3, A-1010 Vienna) shall reach a decision on the assignment of a project to a responsible authority for the co-ordination of the project.</p>	<p>Regional office of Jihomoravský kraj. Žerotínovo nám.3/5, 601 82 Brno tel:++420 541 651 306 Fax: ++420 541 651 349 Email: zatloukal.artur@kr-jihomoravsky.cz</p> <p>Regional office of kraj Vysočina Žižkova 16, 58601 Jihlava Tel:++420 564 602 545 Fax: ++420 564 602 423 Email: moudra.j@kr-vysocina.cz</p> <p>Regional office of Jihočeský kraj U Zimního stadionu 1952/2, 37076 České Budějovice Tel: ++420 386 720 144 Fax: ++420 386 359 011 Email: navara@kraj-jihocesky.cz</p> <p>Centre for Regional Development Vinohradská 46 Praha 2, 120 41 Tel: ++420 221580 201 Fax: ++420 221580 248 Email: ryslavy@crr.cz</p> <p>CRD Regional office for NUTS II South East Obilní trh 7 624 00 Brno tel/fax: ++ 420 541212357 Email: jihovychod@crr.cz</p>

10 Code Numbers for Assistance from the Structural Funds

341-345, 162, 163, 1301+1308+1312+1313, 353, 125, 126, 127, 332+333, 151+152

11 Desired Effects on the Integration of the Border Region

Development of a shared understanding and a common view regarding resource management, technical infrastructure and renewable energy

Elaborating a common basis for planning and decision-making in these fields towards a compatibility of systems and common standards

Exploiting cross-border synergy effects when extending and further developing existing technical infrastructure facilities

12 Indicators for Monitoring and Evaluation

Impact Indicators:

Contribution to the development and implementation of joint (environmental) standards and monitoring

Co-ordinated environmental and resource management, creation of co-operation structures

Utilisation of renewable energy resources and natural resources

Improvement of environmental status/reduction of emissions

Improving the standard and joint use of environmental infrastructure and technology

Output Indicators

Number of projects dealing with air pollution, noise reduction, improvements of urban and industrial waste disposal or recycling facilities, drinking water (collection, storage, treatment distribution) or the improvement in sewerage and purification

Number of projects providing financial support to introduce environmental technologies or to develop eco-products [environmental impact of firms activities in terms of decreased pollution (CO₂, in %)]

Number of projects providing business advisory services for small and medium-sized enterprises

Number of projects dealing with land improvement, agricultural water resources management, preservation of the environment (land, forestry and landscape conservation, animal welfare, recovery after damage by and prevention of natural disasters)

Number of projects designed to protect, improve or re-establish natural spaces (national parks, nature parks)

Number of projects dealing with restoring forestry production potential damaged by natural disasters or fire and introducing appropriate prevention instruments

Number of projects dealing with afforestation of non-agricultural land km² (ha) reafforested

Projects designed to preserve and improve the ecological balance of protected forests; km² (ha) afforestation

Number of projects designed to utilise renewable energy sources and power and heat coupling systems and to improve both efficiency and energy control, incl. planning and transfer of know-how

Number of investment projects in plants and equipment or in environmental friendly technologies, clean and economical energy technologies production of solar energy MJ/a

Cooperation Indicators:

5 phases of crossborder cooperation; planned / achieved

Gender mainstreaming indicators:

the project: has equality between the sexes as its main focus, is positive in terms of male-female equality or is neutral in terms of such equality

Environmental Indicator:

the project: has the environment as its main focus; is environmental friendly; is environmentally neutral

Location Indicator:

the project is: urban; rural; not geographically delimited

Priority Axis 5 / Measure 2:

Measures for Nature and Environmental Protection including National and Nature Parks

1 Contents / Object of the Measure

The Austrian border region consists of many small-scale protection areas (e.g. Natura 2000 areas) and large-scale landscape protection areas which play a major role in tourism and for the ecology.

Relying on the options listed in the JPD projects with the focus in the following areas will be supported:

Maintenance, expansion and sustainable development of nature and environmental protection measures in national and nature parks as well as nature protection areas, European protection areas and landscape protection areas

Supporting infrastructural measures in national and nature parks as well as planning and monitoring of projects

Development of subject-specific basic knowledge relating to plant and animal life and implementation of protected areas

Measures of nature and environmental protection beyond the protection areas defined by the law

Public relation work and awareness building

2 Goals

Preserving the high natural value of the border region

Protection of natural resources

Offer-oriented development of cross-border national and nature parks as well as joint interlinking and marketing thereof

Increased inclusion of the local population into the preparation of programme / project development in protected areas

Increasing the awareness of the value of an intact nature and landscape; development of efficient education and awareness building measures

Protection and preservation of the high quality of the nature, natural resources and landscape conditions

3 Recipients / Beneficiaries

Austria	Czech Republic
<p>Local and regional authorities</p> <p>Associations</p> <p>Natural and legal persons under private and public law and partnerships under civil law</p> <p>NGOs</p>	<p>Municipalities (associations of the municipalities) – Act No.128/2000 Coll., on Municipalities.</p> <p>Towns – Act No. 128/2000 Coll., on Municipalities.</p> <p>Regions – Act No.129/2000 Coll., on Regions.</p> <p>Organizations established by municipalities and regions (and 100% in their ownership) providing public services – necessary statement from the companies register.</p> <p>Non-governmental non-profit organizations (NGOs) – according to the Government Principles for Providing State Budget Funds to the Non-profit Organizations they are defined as:</p> <ul style="list-style-type: none"> • civic associations – acting under Act No.83/1991 Coll., on the Associations of the Citizens • public-benefit organizations – established under Act No.248/1995 Coll., on Public-benefit Organizations • church corporate bodies – established under Act No.3/2002 Coll., on Church and Religious institutions (insofar as they provide health, education and social services or social protection of children) • Interest association of the corporate bodies established under Act No. 40/1964 Coll., Civil Code (as amended) in order to provide service for the regional development in the border regions with Austria. • foundations and endowment funds – established under Act No.227/1997 Coll., on Foundation and Endowment fund <p>Chambers of commerce and agrarian chambers – Act No. 301/1992 Coll., on the Chamber of Commerce and Agrarian Chamber.</p> <p>State established organization</p>

4 Formal Criteria for EU Co-financing

<p>Economic and organisational capacity of the entity responsible for the project</p> <p>Amount and appropriateness of the costs of the project</p> <p>Secured financing, appropriateness of the ratio between own funds and public assistance (taking into account the possible EU co-financing according to the programme as well as any other national public funds applied for, already granted or promised)</p> <p>Relevant project aim in line with sectoral policy objectives (if required, also including statements of other administrative bodies concerned)</p> <p>Fulfilment of the specific requirements for assistance under INTERREG IIIA – pursuant to the CIP and the Programme Complement (see item no. 5)</p> <p>Compliance with the criteria for ERDF assistance (pursuant to Council Regulation no. 1783/99) and with the Commission Regulation concerning the eligibility of operations</p> <p>Compliance with other relevant EU regulations (subsidy laws, rules for the awarding of public contracts, environmental law, etc.)</p> <p>Observance of the condition that any current business of institutions within the framework of their legal mandate or any activities covered by base subsidies cannot be funded under Interreg IIIA.</p>

5 Specific Criteria for the Project Selection

<p>See chapter 3 of the Programme Complement.</p>

6 Eligible Costs

As a general rule:

Project-related material costs and operating expenses

Personnel costs

Planning costs

Project-related investment costs (e.g. construction, infrastructure, development, machinery, hard/software)

Consulting expenses

7 Type and Amount of EU Assistance

Unrecoverable assistance, according to programme 50% at max. for Austria, 75% at max. for Czech Republic

In this connection, it must be observed that the maximum amount of permissible assistance for a specific project according to EU competition law – composed of financial support from EU Structural Funds and national funds – will not be exceeded.

Art. 29 (4) a), b)

no infrastructures which are associated with considerable net earnings

no investments in enterprises provided

8 Implementation Instruments – Legal Basis

a) Legal basis for the granting of the EU funds

b) Legal basis for the granting of national funds

Austria	Czech Republic
<p>a) Einzelentscheidungen der Bundesländer Niederösterreich, Oberösterreich und Wien</p> <p>b)</p> <ol style="list-style-type: none"> 1. Einzelentscheidungen der Länder Niederösterreich, Oberösterreich und Wien 2. Einzelentscheidungen von Gemeinden in Niederösterreich, Oberösterreich 3. Allgemeine Rahmenrichtlinie für die Gewährung von Förderungen aus Bundesmitteln (BMF.-Z.01 3301/7-II/3/77 vom 5. Mai 1977, geltende Fassung) 4. Einzelentscheidungen des Bundes <p>Einzelentscheidung</p> <ul style="list-style-type: none"> - NÖ Nationalparkgesetz, Landesgesetzblatt 5505-0 - Vereinbarungen gemäß Artikel 15 a BVG zwischen dem Bund und den Ländern Niederösterreich und Wien zur Errichtung und Erhaltung eines Nationalparks Donauauen, Landesgesetzblatt 5506-0 (SK und H) - Vereinbarung gemäß Artikel 15a BVG zwischen dem Bund und dem Land Niederösterreich zur Errichtung und Erhaltung eines Nationalparks Thayatal, Landesgesetzblatt 5507-0 (CZ und SK) - NÖ Naturschutzgesetz 2000, Landesgesetzblatt 5500-0 vom 31.8.2000 - Richtlinie zur Förderung der Naturparke in NÖ - Richtlinie des NÖ Landschaftsfonds 	<p>a)</p> <ul style="list-style-type: none"> - Individual acts of the regions, South Bohemia, South Moravia, Vysočina - individual acts of the municipalities from the regions South Bohemia, South Moravia, Vysočina - Law No. 218/2000 Sb. On budgetary rules and changes of some relevant Acts - Law No. 205/2000 Sb. On budgetary rules of territorial bodies <p>b)</p> <ul style="list-style-type: none"> - Individual acts of the regions, South Bohemia, South Moravia, Vysočina - individual acts of the municipalities from the regions South Bohemia, South Moravia, Vysočina - Law No. 218/2000 Sb. On budgetary rules and changes of some relevant Acts - Law No. 205/2000 Sb. On budgetary rules of territorial bodies

9 Competent Authority / Contact Point for SF Grants

Austria	Czech Republic
<p>Niederösterreich: Amt der Niederösterreichischen Landesregierung, Abt. RU2, Landhausplatz 1, A-3109 St. Pölten</p> <p>Tel: ++(43)(2742)-9005-14329</p> <p>Fax: ++(43)(2742)-9005-14170</p> <p>E-mail: martin.kavalek@noel.gv.at</p> <p>Oberösterreich: Amt der Oberösterreichischen Landesregierung, Koordinationsstelle für EU-Regionalpolitik, Annagasse 2, 4010 Linz</p> <p>Tel: ++(43) (732) 7720-14823</p> <p>Fax: ++(43) (732) 7720-14819</p> <p>E-mail: robert.schroetter@ooe.gv.at</p> <p>Wien: Amt der Wiener Landesregierung, MA 27 – EU-Förderungen, Rathaus, A-1080 Wien</p> <p>Tel: ++(43)(1)-4000-82582</p> <p>Fax: ++(43)(1)-4000-7215</p> <p>E-mail: sto@meu.magwien.gv.at</p> <p>In the event of difficulties in deciding who is to be responsible, the Managing Authority (Republic of Austria, Federal Chancellery, Department IV/4, Hohenstaufengasse 3, A-1010 Vienna) shall reach a decision on the assignment of a project to a responsible authority for the co-ordination of the project.</p>	<p>Regional office of Jihomoravský kraj. Žerotínovo nám.3/5, 601 82 Brno tel:++420 541 651 306 Fax: ++420 541 651 349 Email: zatloukal.artur@kr-jihomoravsky.cz</p> <p>Regional office of kraj Vysočina Žižkova 16, 58601 Jihlava Tel:++420 564 602 545 Fax: ++420 564 602 423 Email: moudra.j@kr-vysocina.cz</p> <p>Regional office of Jihočeský kraj U Zimního stadionu 1952/2, 37076 České Budějovice Tel: ++420 386 720 144 Fax: ++420 386 359 011 Email: navara@kraj-jihocesky.cz</p> <p>Centre for Regional Development Vinohradská 46 Praha 2, 120 41 Tel: ++420 221580 201 Fax: ++420 221580 248 Email: ryslavy@crr.cz</p> <p>CRD Regional office for NUTS II South East Obilní trh 7 624 00 Brno tel/fax: ++ 420 541212357 Email: jihovychod@crr.cz</p>

10 Code Numbers for Assistance from the Structural Funds

1301+1308+1312+1313, 125, 126, 127, 353

11 Desired Effects on the Integration of the Border Region

Development of a shared understanding and a common view regarding the environment, nature and environmental protection and eco-friendly exploitation of the common natural resources

Elaborating a common basis for planning and decision-making in these fields towards a compatibility of systems and common standards

Exploiting cross-border synergy effects when extending and further developing the environmental infrastructure

Joint eco-friendly development and marketing of the common environmental potential

12 Indicators for Monitoring and Evaluation

Impact Indicators:

Contribution to the development and implementation of joint (environmental) standards

Integration and joint protection/use of ecologically valuable zones and natural heritage

Co-ordinated management of nature and national parks, creation and expansion of co-operation structures

Common external image and marketing of nature and national parks

Improved standard and joint use of nature and national park infrastructure, environmental infrastructure and technology

Output Indicators:

Number of projects dealing with land improvement, agricultural water resources management, preservation of the environment (land, forestry and landscape conservation, animal welfare, recovery after damage by and prevention of natural disasters)

Number of projects dealing with restoring forestry production potential damaged by natural disasters or fire and introducing appropriate prevention instruments km²(ha) reforested

Number of projects dealing with afforestation of non-agricultural land km² (ha) reforested

Number of project dealing with improving / maintaining the ecological stability of protective forests km² (ha) reforested

Number of projects dealing with prevention, upgrading and rehabilitation of natural areas, national and nature parks

Cooperation Indicators:

5 phases of crossborder cooperation; planned / achieved

Gender mainstreaming indicators:

the project: has equality between the sexes as its main focus, is positive in terms of male-female equality or is neutral in terms of such equality

Environmental Indicator:

the project: has the environment as its main focus; is environmental friendly; is environmentally neutral

Location Indicator:

the project is: urban; rural; not geographically delimited

Priority Axis 5 / Measure 3: Cross-border Spatial Development in Rural and Urban Areas

1 Contents / Object of the Measure

The development of an integrated cross-border region calls for a harmonised strategy in the area of spatial development and planning. Experience has shown that up to now only few joint spatial development concepts have been produced or initiated to date. Where this has been achieved, the experience has been highly positive with respect to cooperation and information exchange and the policy has also created impulses for the regional economy and planning work.

The focus of the spatial development strategies in this border region is on the economic and infrastructure development of rural regional parts and the development of sustainable land use concepts, the development and preservation of nature areas and in the field of settlement structures (e.g. suburbanisation processes, land flight, etc.).

Relying on the options listed in the JPD projects with the focus in the following areas will be supported::

Studies on spatial development / regional planning (e.g. development schemes, subspace assessments, development of perspectives for spatial development and natural spaces, location planning, etc.)

Development schemes, (feasibility) studies

Strategic studies and analyses serving the purpose of preparing for EU enlargement and cross-border pilot projects

Establishment of information systems (e.g. databases, spatial information systems, environmental monitoring)

Cooperation in the field of spatial planning and the establishment of cross-border cooperation, consulting and information centres

2 Goals

Creation of a spatially balanced settlement and economic structure

Development of rural and urban space as well as development of urban agglomerations, always taking into account the need for sustainable development

Improving the quality of life and the quality of the environment as well as sustainable protection of the natural resources serving as a basis for life

Improvement and preservation of extensively utilised cultural landscapes

Balanced economic, cultural and ecological development of the border area (e.g. in the framework of the cross-border processes of the local Agenda 21)

3 Recipients / Beneficiaries

Austria	Czech Republic
<p>Local and regional authorities</p> <p>Associations</p> <p>Natural and legal persons under private and public law and partnerships under civil law</p> <p>NGOs</p>	<p>Municipalities (associations of the municipalities) – Act No.128/2000 Coll., on Municipalities.</p> <p>Towns – Act No. 128/2000 Coll., on Municipalities.</p> <p>Regions – Act No.129/2000 Coll., on Regions.</p> <p>Organizations established by municipalities and regions (and 100% in their ownership) providing public services – necessary statement from the companies register.</p> <p>Non-governmental non-profit organizations (NGOs) – according to the Government Principles for Providing State Budget Funds to the Non-profit Organizations they are defined as:</p> <ul style="list-style-type: none"> • civic associations – acting under Act No.83/1991 Coll., on the Associations of the Citizens • public-benefit organizations – established under Act No.248/1995 Coll., on Public-benefit Organizations • church corporate bodies – established under Act No.3/2002 Coll., on Church and Religious institutions (insofar as they provide health, education and social services or social protection of children) • Interest association of the corporate bodies established under Act No. 40/1964 Coll., Civil Code (as amended) in order to provide service for the regional development in the border regions with Austria. • foundations and endowment funds – established under Act No.227/1997 Coll., on Foundation and Endowment fund <p>Chambers of commerce and agrarian chambers – Act No. 301/1992 Coll., on the Chamber of Commerce and Agrarian Chamber.</p> <p>State established organization</p>

4 Formal Criteria for EU Co-financing

<p>Economic and organisational capacity of the entity responsible for the project</p> <p>Amount and appropriateness of the costs of the project</p> <p>Secured financing, appropriateness of the ratio between own funds and public assistance (taking into account the possible EU co-financing according to the programme as well as any other national public funds applied for, already granted or promised)</p> <p>Relevant project aim in line with sectoral policy objectives (if required, also including statements of other administrative bodies concerned)</p> <p>Fulfilment of the specific requirements for assistance under INTERREG IIIA – pursuant to the CIP and the Programme Complement (see item no. 5)</p> <p>Compliance with the criteria for ERDF assistance (pursuant to Council Regulation no. 1783/99) and with the Commission Regulation concerning the eligibility of operations</p> <p>Compliance with other relevant EU regulations (subsidy laws, rules for the awarding of public contracts, environmental law, etc.)</p> <p>Observance of the condition that any current business of institutions within the framework of their legal mandate or any activities covered by base subsidies cannot be funded under Interreg IIIA.</p>

5 Specific Criteria for the Project Selection

See chapter 3 of the Programme Complement.

6 Eligible Costs

As a general rule:

Project-related material costs and operating expenses

Personnel costs

Planning costs

Project-related investment costs (e.g. construction, infrastructure, development, machinery, hard/software)

Consulting expenses

7 Type and Amount of EU Assistance

Unrecoverable assistance, according to programme 50% at max. for Austria, 75% at max. for Czech Republic

In this connection, it must be observed that the maximum amount of permissible assistance for a specific project according to EU competition law – composed of financial support from EU Structural Funds and national funds – will not be exceeded.

Art 29 (4) a), b)

no infrastructures which are associated with considerable net earnings

no investments in enterprises provided

8 Implementation Instruments – Legal Basis

a) Legal basis for the granting of the EU funds

b) Legal basis for the granting of national funds

Austria	Czech Republic
<p>a) Einzelentscheidungen der Bundesländer Niederösterreich, Oberösterreich und Wien</p> <p>b)</p> <ol style="list-style-type: none"> 1. Einzelentscheidungen der Länder Niederösterreich, Oberösterreich und Wien 2. Einzelentscheidungen von Gemeinden in Niederösterreich, Oberösterreich 3. Allgemeine Rahmenrichtlinie für die Gewährung von Förderungen aus Bundesmitteln (BMF.-Z.01 3301/7-II/3/77 vom 5. Mai 1977, geltende Fassung) 4. Einzelentscheidungen des Bundes 	<p>a)</p> <ul style="list-style-type: none"> - Individual acts of the regions, South Bohemia, South Moravia, Vysočina - individual acts of the municipalities from the regions South Bohemia, South Moravia, Vysočina - Law No. 218/2000 Sb. On budgetary rules and changes of some relevant Acts - Law No. 205/2000 Sb. On budgetary rules of territorial bodies <p>b)</p> <ul style="list-style-type: none"> - Individual acts of the regions, South Bohemia, South Moravia, Vysočina - individual acts of the municipalities from the regions South Bohemia, South Moravia, Vysočina - Law No. 218/2000 Sb. On budgetary rules and changes of some relevant Acts - Law No. 205/2000 Sb. On budgetary rules of territorial bodies

9 Competent Authority / Contact Point for SF Grants

Austria	Czech Republic
<p>Niederösterreich: Amt der Niederösterreichischen Landesregierung, Abt. RU2, Landhausplatz 1, A-3109 St. Pölten</p> <p>Tel: ++(43)(2742)-9005-14329</p> <p>Fax: ++(43)(2742)-9005-14170</p> <p>E-mail: martin.kavalek@noel.gv.at</p> <p>Oberösterreich: Amt der Oberösterreichischen Landesregierung, Koordinationsstelle für EU-Regionalpolitik, Annagasse 2, 4010 Linz</p> <p>Tel: ++(43) (732) 7720-14823</p> <p>Fax: ++(43) (732) 7720-14819</p> <p>E-mail: robert.schroetter@ooe.gv.at</p> <p>Wien: Amt der Wiener Landesregierung, MA 27 – EU-Förderungen, Rathaus, A-1080 Wien</p> <p>Tel: ++(43)(1)-4000-82582</p> <p>Fax: ++(43)(1)-4000-7215</p> <p>E-mail: sto@meu.magwien.gv.at</p> <p>In the event of difficulties in deciding who is to be responsible, the Managing Authority (Republic of Austria, Federal Chancellery, Department IV/4, Hohenstaufengasse 3, A-1010 Vienna) shall reach a decision on the assignment of a project to a responsible authority for the co-ordination of the project.</p>	<p>Regional office of Jihomoravský kraj. Žerotínovo nám.3/5, 601 82 Brno tel:++420 541 651 306 Fax: ++420 541 651 349 Email: zatloukal.artur@kr-jihomoravsky.cz</p> <p>Regional office of kraj Vysočina Žižkova 16, 58601 Jihlava Tel:++420 564 602 545 Fax: ++420 564 602 423 Email: moudra.j@kr-vysocina.cz</p> <p>Regional office of Jihočeský kraj U Zimního stadionu 1952/2, 37076 České Budějovice Tel: ++420 386 720 144 Fax: ++420 386 359 011 Email: navara@kraj-jihocesky.cz</p> <p>Centre for Regional Development Vinohradská 46 Praha 2, 120 41 Tel: ++420 221580 201 Fax: ++420 221580 248 Email: ryslavy@crr.cz</p> <p>CRD Regional office for NUTS II South East Obilní trh 7 624 00 Brno tel/fax: ++ 420 541212357 Email: jihovychod@crr.cz</p>

10 Code Numbers for Assistance from the Structural Funds

351+352+353+354, 1306, 1642, 1643

11 Desired Effects on the Integration of the Border Region

Identifying the joint potential/opportunities and risks stemming from the common border area

Adaptation of concepts, plans, programmes and strategies to these common findings and views

Recognition of the common region as a basis for strategic planning

12 Indicators for Monitoring and Evaluation

Impact Indicators:

Harmonisation of settlement and infrastructure development and planning, landscape planning/use, social and economic development of locations

Harmonisation of planning and use of environmental and urban technologies

Harmonisation of strategic preparation for EU enlargement

Analysis and study of regional development potentials and strategies

Creation and expansion of co-operation structures and networks

Output Indicators:

Number of research and planning projects dealing with upgrading and rehabilitation of industrial sites, rehabilitation of urban areas, biodiversity etc. or preservation of cultural heritage

Number of projects dealing with renovation and development of villages or protection and conservation of the rural heritage

Number of projects providing support for information networks, SME cooperation networks, development concepts, stimulation and promotional services etc.

Number of projects providing support for regional development plans, concepts and studies, regional management, EuRegios etc.

Cooperation Indicators:

5 phases of crossborder cooperation; planned / achieved

Gender mainstreaming indicators:

the project: has equality between the sexes as its main focus, is positive in terms of male-female equality or is neutral in terms of such equality

Environmental Indicator:

the project: has the environment as its main focus; is environmental friendly; is environmentally neutral

Location Indicator:

the project is: urban; rural; not geographically delimited

Priority Axis 6 / Special Support for Border Regions

On 25th July 2001, the Commission passed the so-called „Community Action for Border Regions“ [KOM(2001) 437 final version], i.e. a document describing the impacts the upcoming enlargement of the European Union will have on the regions bordering on accession countries. This action plan suggests a number of measures for the benefit of these regions to help them prepare for the enlargement of the European Union. The Commission proposed to add the financial resources dedicated to this purpose to the INTERREG programmes in the form of a single common priority called "special support for regions bordering on accession countries". This priority is valid only for the Austrian border region, the funds are available only for the year 2002 and have to be spent until end of 2004.

Objectives

The financial resources are dedicated to supporting activities serving to ensure a smooth transition in the border regions and sustainable acceptance of the enlargement of the European Union by the general public. The new priority is intended to support environmentally favourable projects that are directly associated with the enlargement of the European Union and will improve the competitive strength of the border regions.

Strategies

Support will in particular be granted for:

- Activities to support those small and medium-sized enterprises that will be particularly affected by the enlargement of the EU so as to enhance cross-border economic cooperation.
- Expansion of cross-border traffic routes to ensure sustainable and environmentally friendly development of potentials in the fields of tourism and nature on both sides of the respective border.
- Educational measures and intercultural cooperation, including measures to promote the integration of other cultural and language groups so as to reduce cultural and language barriers.

Priority Axis 6

1 Contents / Object of the Measure

a) Small and Medium Sized Enterprises that are particularly affected by the EU enlargement

This measure contains target-oriented preparation of and support for those small and medium-sized enterprises that are particularly affected by the upcoming enlargement of the EU so as to enable them to adapt to the impending modifications of the economic framework conditions. Full opening of the borders, free movement of persons and goods and freedom of establishment will completely change the economic framework conditions even though the full scope of these changes will, as a consequence of the transition periods to be agreed, not be felt immediately. Small and medium-sized enterprises, in particular, are often subject to limitations in terms of human resources and time, and therefore find it difficult to engage to a significant degree in research, development, cooperation projects and measures to improve their market situation without external support.

b) Development of the cross-border transport network

This measure contains cross-border projects in the field of traffic, especially to improve the utilisation of potentials in the field of tourism and nature.

The measure focuses, among other things, on providing structures facilitating the crossing of the river March and improving the access to existing and historically significant border crossing points in the region. An additional priority consists of reviving and expanding the historical railway connections between Vienna and Bratislava.

Creating, expanding and reactivating border crossing points between Austria and Czech Republic is intended to reduce the barrier function of the border between the countries, especially in the context of small-scale cross-border activities, and to improve the framework conditions for cross-border tourism.

c) Training activities and intercultural cooperation including measures to promote integration of other cultural and language groups

Activities to promote cultural exchange and intercultural cooperation (e.g. cross-border events, exhibitions) (e.g. joint events, exhibitions).

Cooperation projects involving minorities.

(Further) development of cross-border organisational structures and cooperation networks as well as theme-specific networks (culture marketing, media platform).

Projects to improve minority language skills (e.g. in small and medium-sized enterprises).

2 Goals

- | | |
|----|---------------------------------------------------------------------------------------------------------------------------------------------------------------------------------------------------------------------------------------------------------------------------------------------------------------------------------------------------------------------------------------------------------------------------------------------------------------------------------------------------------------------------------------------------------------------------------------------------------------------------------------------------------------------------------------------------------------------------------------------------------------------------------------------------------------------------------------------------------------------------------------------------------------------------|
| a) | Increasing the innovative power and competitiveness of enterprises (esp. SMEs) in the light of the EU enlargement
Support of set-up platforms and networks to increase business links
Improvement of cross-border information about offer and demand in the labour sector
Strengthening enterprises that engage in cross-border activities in the field of environmental protection and make a sustainable contribution to improving the environmental situation in the border area.
Support of telematic and IT-initiatives
Creation of a business-related infrastructure that properly responds to the needs of enterprises
Intensified business co-operation projects (esp. SMEs) in the border area for strengthening the region's economic power and fostering export activities
Initiation of cross-border language and management training facilities for small and medium-sized enterprises. |
| b) | Reducing the barrier function of the border between the countries, especially in the context of small-scale cross-border activities and cross-border tourism.
Improving accessibility, especially with a view to the transportation of goods. |
| c) | Initiation of cross-border exchange projects in the field of culture and languages.
Development of networks to enhance cross-border integration and intensification of economic, social and cultural contacts.
Promoting the preservation of minority languages.
Improving acceptance of the neighbours, especially with a view to the upcoming enlargement of the EU. |

3 Recipients / Beneficiaries

Enterprises Special-purpose companies Associations Local and regional authorities Natural and legal persons under private and public law and partnerships under civil law Transport operators Interest groups Regional associations Transport alliances Other infrastructure operators Research institutions

4 Formal Criteria for EU Co-financing

Economic and organisational capacity of the entity responsible for the project

Amount and appropriateness of the costs of the project

Secured financing, appropriateness of the ratio between own funds and public assistance (taking into account the possible EU co-financing according to the programme as well as any other national public funds applied for, already granted or promised)

Relevant project aim in line with sectoral policy objectives (if required, also including statements of other administrative bodies concerned)

Fulfilment of the specific requirements for assistance under INTERREG IIIA– pursuant to the CIP and the Programme Complement (see item no. 5)

Compliance with the criteria for ERDF assistance (pursuant to Council Regulation no. 1783/99) and with the Commission Regulation concerning the eligibility of operations (also Regulation no. 1685/00)

Compliance with other relevant EU regulations (subsidy laws, rules for the awarding of public contracts, environmental law, etc.)

Observance of the condition that any current business of institutions within the framework of their legal mandate or any activities covered by base subsidies cannot be funded under Interreg IIIA.

5 Specific Criteria for the Project Selection

See chapter 3 of the Programme Complement.

6 Eligible Costs

As a general rule:

Project-related material costs and operating expenses

Personnel costs

Planning costs

Project-related investment costs (e.g. construction, infrastructure, development, machinery, hard/software)

Consulting expenses

7 Type and Amount of EU Assistance

Unrecoverable assistance, according to programme 50% at max.

In this connection, it must be observed that the maximum amount of permissible assistance for a specific project according to EU competition law – composed of financial support from EU Structural Funds and national funds – will not be exceeded.

8 Implementation Instruments – Legal Basis

a) Legal basis for the granting of the EU funds

b) Legal basis for the granting of national funds

a)

Einzelentscheidungen der Bundesländer Niederösterreich, Oberösterreich und Wien

b)

12. Einzelentscheidungen der Bundesländer Niederösterreich, Oberösterreich und Wien

13. Einzelentscheidungen von Gemeinden in Niederösterreich, Oberösterreich

14. Allgemeine Rahmenrichtlinie für die Gewährung von Förderungen aus Bundesmitteln (BMF.-Z.01 3301/7-II/3/77 vom 5. Mai 1977, geltende Fassung)

15. Einzelentscheidungen des Bundes

NÖ Kulturförderungsgesetz 1996. LGBl.5301; Richtlinien für die Förderung nach dem NÖ Kulturförderungsgesetz 1996

16. ERP-Fonds: Richtlinie "ERP-Infrastrukturprogramm"

17. Sonderrichtlinie für regionale Impulsförderung RIF 2000-2006

18. Richtlinien für die Förderungsaktion der NÖ Grenzlandförderungsgesellschaft

19. Eco-Plus-Richtlinien für die regionale Infrastrukturförderung in Niederösterreich (N109/98 Laufzeit bis 31.12.2006)

20. Telematik & C-Tech Wien (Zuschüsse; de minimis)

21. Innovations- und Technologieförderung der Stadt Wien (Zuschüsse; notifiziert FTE)

Umwelt- und Technologieförderung der Stadt Wien (Zinszuschüsse, Laufzeit ab 1.3.2001 bis auf Widerruf; de-minimis)

9 Competent Authority / Contact Point for SF Grants

Niederösterreich: Amt der Niederösterreichischen Landesregierung, Abt. RU2, Landhausplatz 1, A-3109 St. Pölten

Tel: ++(43)(2742)-9005-14329

Fax: ++(43)(2742)-9005-14170

E-mail: martin.kavalek@noel.gv.at

Oberösterreich: Amt der Oberösterreichischen Landesregierung, Koordinationsstelle für EU-Regionalpolitik, Annagasse 2, 4010 Linz

Tel: ++(43) (732) 7720-14823

Fax: ++(43) (732) 7720-14819

E-mail: robert.schroetter@ooe.gv.at

Wien: Amt der Wiener Landesregierung, MA 27 – EU-Förderungen, Rathaus, A-1080 Wien

Tel: ++(43)(1)-4000-82582

Fax: ++(43)(1)-4000-7215

E-mail: sto@meu.magwien.gv.at

In the event of difficulties in deciding who is to be responsible, the Managing Authority (Republic of Austria, Federal Chancellery, Department IV/4, Hohenstaufengasse 3, A-1010 Vienna) shall reach a decision on the assignment of a project to a responsible authority for the co-ordination of the project.

10 Code Numbers for Assistance from the Structural Funds

a) 162, 163, 164, 165, 167; b) 311-319; 1712, 1713; c) 1732, 1714, 22, 23

11 Desired Effects on the Integration of the Border Region

- a) Creation of and co-operation in cross-border business centres
Enhanced attractiveness of the location area on both sides of the border
Cross-border know-how transfer
- b) Integration of the border region by harmonising and optimising cross-border transport services, especially with regard to public and combined transport
Improvement of the links of the border region to Trans-European Network
Improving/facilitating neighbourly trade and intensified networking through an improved infrastructure
- c) Reduction of information deficits and mental barriers at the local and regional level
Networking of private and/or public institutions with an intercultural focus
Development and implementation of intercultural education and qualification offerings (with a focus on minorities)
Promotion of minority language facilities with cross-border effects
Development and implementation of cultural exchange programmes with longterm effects

12 Indicators for Monitoring and Evaluation

Impact Indicators:

- a) Creation and expansion of infrastructure facilitating cross-border activities and responding to the needs of enterprises and establishment and expansion of business-related services.
Improvement of framework conditions for the establishment of cross-border cooperation between enterprises and on a superordinate level as well as enhancement of cooperation networks.
Common presence vis-à-vis third parties / integrated marketing of the region.
Elimination of legal and technical barriers.
- b) (Preparation of the) improvement of cross-border infrastructure, faster and improved transportation links
(Preparation of) links to international transportation routes
Contribution to the creation and reinforcement of cross-border logistics
Improving the services and products and the joint use of tourism infrastructure.
- c) Continuous cooperation and exchange of information between educational and scientific institutions, establishment of cooperation structures.
Development and implementation of education and qualification modules with a cross-border focus and bilingual/multilingual training courses / teaching materials.
Establishment or consolidation of structures facilitating regular mutual intercultural exchange of information.
Establishment and expansion of structures serving to maintain and accompany cross-border intercultural projects.

Output Indicators:

- a) Number of projects providing physical support for SME (plant and equipment etc.) [number of jobs created]
Number of projects providing financial support to introduce environmental technologies or to develop eco-products
Number of projects providing business advisory services for small and medium-sized companies
Number of support projects for information networks, business planning, new technologies, cooperation networks, participation in fairs, etc.
Number of projects supporting R&D networks and transfer of technology
Number of vocational training and training projects (SMEs); number of trainees
- b) Number of projects providing support for the improvement of rail, road, airport, urban transport, ports, multimodal transport intelligent transport systems;
km of biking / hiking / horseback riding path constructed
- c) Number of vocational education and training projects (number of participants).
Number of projects supporting intercultural networks and exchange programmes .

Co-operation Indicators:

5 phases of cross-border co-operation; planned / achieved

Gender mainstreaming indicators:

the project: has equality between the sexes as its main focus, is positive in terms of male-female equality or is neutral in terms of such equality

Environmental Indicator:

the project: has the environment as its main focus; is environmentally friendly; is environmentally neutral

Location Indicator:

the project is: urban; rural; not geographically delimited

Technical Assistance

According to Article 23 of Regulation (EU) Nr. 1260/1999, technical assistance has the propose of aiding the preparation, support, evaluation and control work involved in the programme and is subdivided by Rule 11 of Regulation (EC) Nr. 448/2004 into two areas:

TA-1: Administration, implementation, support and control

TA-2: Other activities within the scope of technical assistance

Technical Assistance-1: Administration, implementation, support and control activities (pursuant to Rule 11, par. 2 Regulation (EC) 448/2004)

1 Contents / Object of the Measure

Relying on the options listed in the JPD projects with the focus in the following areas will be supported:

- Activities in connection with the preparation, selection, evaluation and support of interventions and operations
- Activities involving meetings of the Monitoring Committees and Steering Committees in connection with the intervention, including the Technical Secretariat as well as costs of experts and third-country participants pursuant to Rule 11 par. 2.1. Regulation (EC) Nr. 1685/2000.
- Examination and on-site checks of operations
- Draw up of the obligatory reports on the progress of the programme (annual implementation report, progress report)
- Preparation of the programme of the following SF-period
- Running and management of an electronic based monitoring for the management and monitoring of the programme
- Specific measures pursuant to number 52 of the INTERREG III guideline with a view to the creation and development of common structures

2 Goals

- Ensuring efficient and in-time technical programme implementation
- Co-ordination of the cross-border co-operation at the programme level
- Exchange of experiences

3 Recipients / Beneficiaries

Austria	Czech Republic
Local and regional authorities	Joint Technical Secretariat Authorities in charge of programme management
Technical Secretariat	
Natural and legal persons under private and public law and partnerships under civil law	
Other authorities in charge of programme support	

4 Formal Criteria for EU Co-financing

Economic and organisational capacity of the entity responsible for the project

Amount and appropriateness of the costs of the project

Secured financing, appropriateness of the ratio between own funds and public assistance (taking into account the possible EU co-financing according to the programme as well as any other national public funds applied for, already granted or promised)

Relevant project aim in line with sectoral objectives (if required, also including statements of other administrative bodies concerned)

Fulfilment of the specific requirements for assistance under INTERREG IIIA – Pursuant to the CIP and the Supplement to the Programming Documentation (see item 5)

Compliance with the criteria for ERDF assistance (pursuant to Council Regulation no. 1783/99) and with the Commission Regulation concerning the eligibility of operations

Compliance with other relevant EU regulations (subsidy laws, rules for the awarding of public contracts, environmental law, etc.)

Observance of the condition that any ongoing business of institutions within the framework of their legal mandate or any activities covered by base subsidies cannot be funded under INTERREG IIIA.

5 Specific Criteria for the Project Selection

Relevant for an efficient implementation of the intervention

Compatibility of the single-project to the overall-planning of the TA of the Managing Authority

6 Eligible Costs

As a general rule:

Project-related cost of materials and expenses for tangible items

Personnel costs

Consultation fee

7 Type and Amount of EU Assistance

Unrecoverable assistance, according to programme 50% at max.for Austria, 75% at max.for the Czech Republic

In this connection, it is essential to take into account that the maximum amount of funding - consisting of financing provided by the EU Structural Funds and national funding - permitted for a specific project pursuant to the EU competition rules must not be exceeded.

8 Implementation Instruments – Legal Basis

a) Legal basis for the granting of the EU funds

b) Legal basis for the granting of national funds

Austria	Czech Republic
<p>a) Einzelentscheidungen des Bundeskanzleramts in seiner Funktion als VB sowie Einzelentscheidungen der Bundesländer Niederösterreich, Oberösterreich und Wien</p> <p>b)</p> <ol style="list-style-type: none"> 1. Allgemeine Rahmenrichtlinie für die Gewährung von Förderungen aus Bundesmitteln (BMF.-Z.01 3301/7-II/3/77 vom 5. Mai 1977, geltende Fassung) 2. Einzelentscheidungen des Bundes 3. Einzelentscheidungen der Länder Niederösterreich, Oberösterreich und Wien 	<p>a)</p> <ul style="list-style-type: none"> - Individual acts of the regions, South Bohemia, South Moravia, Vysočina - individual acts of the municipalities from the regions South Bohemia, South Moravia, Vysočina - Law No. 218/2000 Sb. On budgetary rules and changes of some relevant Acts - Law No. 205/2000 Sb. On budgetary rules of territorial bodies <p>b)</p> <ul style="list-style-type: none"> - Individual acts of the regions, South Bohemia, South Moravia, Vysočina - individual acts of the municipalities from the regions South Bohemia, South Moravia, Vysočina - Law No. 218/2000 Sb. On budgetary rules and changes of some relevant Acts - Law No. 205/2000 Sb. On budgetary rules of territorial bodies

9 Competent Authority / Contact Point for SF Grants

Austria	Czech Republic
<p>Republik Österreich, Bundeskanzleramt, Abteilung IV/4, Hohenstaufengasse 3, A-1010 Wien Tel.: ++43 1 531 15 – 2910 Fax: ++43 1 531 15 – 2180 e-mail: iv4post@bka.gv.at</p> <p>Niederösterreich: Amt der Niederösterreichischen Landesregierung, Abt. RU2, Landhausplatz 1, A-3109 St. Pölten Tel: ++(43)(2742)-9005-14329 Fax: ++(43)(2742)-9005-14170 E-mail: martin.kavalek@noel.gv.at</p> <p>Oberösterreich: Amt der Oberösterreichischen Landesregierung, Koordinationsstelle für EU-Regionalpolitik, Annagasse 2, 4010 Linz Tel: ++(43) (732) 7720-14823 Fax: ++(43) (732) 7720-14819 E-mail: robert.schroetter@ooe.gv.at</p> <p>Wien: Amt der Wiener Landesregierung, MA 27 – EU-Förderungen, Rathaus, A-1080 Wien Tel: ++(43)(1)-4000-82582 Fax: ++(43)(1)-4000-7215 E-mail: sto@meu.magwien.gv.at</p> <p>In the event of difficulties in deciding who is to be responsible, the Managing Authority (Republic of Austria, Federal Chancellery, Department IV/4, Hohenstaufengasse 3, A-1010 Vienna) shall reach a decision on the assignment of a project to a responsible authority for the co-ordination of the project.</p>	<p>Regional office of Jihomoravský kraj. Žerotínovo nám.3/5, 601 82 Brno tel:++420 541 651 306 Fax: ++420 541 651 349 Email: zatloukal.artur@kr-jihomoravsky.cz</p> <p>Regional office of kraj Vysočina Žižkova 16, 58601 Jihlava Tel:++420 564 602 545 Fax: ++420 564 602 423 Email: moudra.j@kr-vysocina.cz</p> <p>Regional office of Jihočeský kraj U Zimního stadionu 1952/2, 37076 České Budějovice Tel: ++420 386 720 144 Fax: ++420 386 359 011 Email: navara@kraj-jihocesky.cz</p> <p>Centre for Regional Development Vinohradská 46 Praha 2, 120 41 Tel: ++420 221580 201 Fax: ++420 221580 248 Email: ryslavy@crr.cz</p> <p>CRD Regional office for NUTS II South East Obilní trh 7 624 00 Brno tel/fax: ++ 420 541212357 Email: jihovychod@crr.cz</p>

10 Code Numbers for Assistance from the Structural Funds

411

11 Desired Effects on the Integration of the Border Region

Efficient common decision-making procedure
 Contribute to the agreement on and transparency in project selection
 Contribute to the strengthening of the joint development process
 Co-ordinated programme adjustments on a regular basis

Technical Assistance-2: Other activities within the scope of technical assistance (pursuant to Rule 11, par. 3 Regulation (EC) 448/2004)

1 Contents / Object of the Measure

Relying on the options listed in the JPD projects with the focus in the following areas will be supported:
 Collection, processing and documentation of data, acquisition and installation of computerised systems for management, monitoring and evaluation
 Information and disclosure activities of the programme
 Programme evaluation
 Preparation of studies as well as realisation of seminars – in connection with the implementation of the intervention

2 Goals

Guarantee of an efficient and in-time technical programme implementation
 Broad information of the public
 Activation of potential project-owners through information and disclosure activities

3 Recipients / Beneficiaries

Austria	Czech Republic
Local and regional authorities Technical Secretariat Natural and legal persons under private and public law and partnerships under civil law Other authorities in charge of programme support	Joint Technical Secretariat Authorities in charge of programme management

4 Formal Criteria for EU Co-financing

Economic and organisational capacity of the entity responsible for the project
 Amount and appropriateness of the costs of the project
 Secured financing, appropriateness of the ratio between own funds and public assistance (taking into account the possible EU co-financing according to the programme as well as any other national public funds applied for, already granted or promised)
 Relevant project aim in line with sectoral objectives (if required, also including statements of other administrative bodies concerned)
 Fulfilment of the specific requirements for assistance under INTERREG IIIA – Pursuant to the CIP and the Supplement to the Programming Documentation (see item 5)
 Compliance with the criteria for ERDF assistance (pursuant to Council Regulation no. 1783/99) and with the Commission Regulation concerning the eligibility of operations
 Compliance with other relevant EU regulations (subsidy laws, rules for the awarding of public contracts, environmental law, etc.)
 Observance of the condition that any ongoing business of institutions within the framework of their legal mandate or any activities covered by base subsidies cannot be funded under INTERREG IIIA.

5 Specific Criteria for the Project Selection

Relevant for an efficient implementation of the intervention
 Compatibility of the single-project to the overall-planning of the TA of the Managing Authority

6 Eligible Costs

As a general rule:
 Installation and operation of a technical secretariat
 Personnel costs
 Consultation fee

7 Type and Amount of EU Assistance

Unrecoverable assistance, according to programme 50% at max. for Austria, 75% at max. for the Czech Republic
 In this connection, it is essential to take into account that the maximum amount of funding - consisting of financing provided by the EU Structural Funds and national funding - permitted for a specific project pursuant to the EU competition rules must not be exceeded.

8 Implementation Instruments – Legal Basis

a) Legal basis for the granting of the EU funds

b) Legal basis for the granting of national funds

Austria	Czech Republic
<p>a) Einzelentscheidungen des Bundeskanzleramts in seiner Funktion als VB sowie Einzelentscheidungen der Bundesländer Niederösterreich, Oberösterreich und Wien</p> <p>b)</p> <p>4. Allgemeine Rahmenrichtlinie für die Gewährung von Förderungen aus Bundesmitteln (BMF.-Z.01 3301/7-II/3/77 vom 5. Mai 1977, geltende Fassung)</p> <p>5. Einzelentscheidungen des Bundes</p> <p>6. Einzelentscheidungen der Länder Niederösterreich, Oberösterreich und Wien</p>	<p>a)</p> <ul style="list-style-type: none"> - Individual acts of the regions, South Bohemia, South Moravia, Vysočina - individual acts of the municipalities from the regions South Bohemia, South Moravia, Vysočina - Law No. 218/2000 Sb. On budgetary rules and changes of some relevant Acts - Law No. 205/2000 Sb. On budgetary rules of territorial bodies <p>b)</p> <ul style="list-style-type: none"> - Individual acts of the regions, South Bohemia, South Moravia, Vysočina - individual acts of the municipalities from the regions South Bohemia, South Moravia, Vysočina - Law No. 218/2000 Sb. On budgetary rules and changes of some relevant Acts - Law No. 205/2000 Sb. On budgetary rules of territorial bodies

9 Competent Authority / Contact Point for SF Grants

Austria	Czech Republic
<p>Republik Österreich, Bundeskanzleramt, Abteilung IV/4, Hohenstaufengasse 3, A-1010 Wien Tel.: ++43 1 531 15 – 2910 Fax: ++43 1 531 15 – 2180 e-mail: iv4post@bka.gv.at</p> <p>Niederösterreich: Amt der Niederösterreichischen Landesregierung, Abt. RU2, Landhausplatz 1, A-3109 St. Pölten Tel: ++(43)(2742)-9005-14329 Fax: ++(43)(2742)-9005-14170 E-mail: martin.kavalek@noel.gv.at</p> <p>Oberösterreich: Amt der Oberösterreichischen Landesregierung, Koordinationsstelle für EU-Regionalpolitik, Annagasse 2, 4010 Linz Tel: ++(43) (732) 7720-14823 Fax: ++(43) (732) 7720-14819 E-mail: robert.schroetter@ooe.gv.at</p> <p>Wien: Amt der Wiener Landesregierung, MA 27 – EU-Förderungen, Rathaus, A-1080 Wien Tel: ++(43)(1)-4000-82582 Fax: ++(43)(1)-4000-7215 E-mail: sto@meu.magwien.gv.at</p> <p>In the event of difficulties in deciding who is to be responsible, the Managing Authority (Republic of Austria, Federal Chancellery, Department IV/4, Hohenstaufengasse 3, A-1010 Vienna) shall reach a decision on the assignment of a project to a responsible authority for the co-ordination of the project.</p>	<p>Regional office of Jihomoravský kraj. Žerotínovo nám.3/5, 601 82 Brno tel:++420 541 651 306 Fax: ++420 541 651 349 Email: zatloukal.artur@kr-jihomoravsky.cz</p> <p>Regional office of kraj Vysočina Žižkova 16, 58601 Jihlava Tel:++420 564 602 545 Fax: ++420 564 602 423 Email: moudra.j@kr-vysocina.cz</p> <p>Regional office of Jihočeský kraj U Zimního stadionu 1952/2, 37076 České Budějovice Tel: ++420 386 720 144 Fax: ++420 386 359 011 Email: navara@kraj-jihocesky.cz</p> <p>Centre for Regional Development Vinohradská 46 Praha 2, 120 41 Tel: ++420 221580 201 Fax: ++420 221580 248 Email: ryslavy@crr.cz</p> <p>CRD Regional office for NUTS II South East Obilní trh 7 624 00 Brno tel/fax: ++ 420 541212357 Email: jihovychod@crr.cz</p>

10 Code Numbers for Assistance from the Structural Funds

412, 413, 414, 415

11 Desired Effects on the Integration of the Border Region

Efficient joint decision-making procedure and implementation of the intervention
 Increasing the public awareness of the intervention
 Co-ordinated programme adjustments on a regular basis

4 PROJECT SELECTION: CRITERIA AND PROCEDURES

As the development of common projects under INTERREG IIIA shall be intensified, the mutual exchange of information on project ideas already before the formal application is of crucial importance. In this respect, besides regular information exchange between the Intermediate Bodies, regional managements and regional development agencies, also info days and joint forums on project ideas will be organised for potential project owners.

In the course of implementation of the Interreg IIIA programme, the following types of projects are expected:

- **Joint projects:** the project is developed jointly and foresees joint implementation of activities by participating project partners in large parts at the same time. The project partners shall nominate a (functional) lead partner responsible for the coordination of project activities. The project application is pre-assessed jointly and joint recommendation for ERDF funding is given by Intermediate Bodies. If the project is approved by the Steering Committee, two separate subsidy contracts are concluded with the Final Beneficiaries in Austria and Czech Republic.
- **Mirror projects:** the projects are developed in co-operation, planning complementary activities to be implemented on both sides of the border but must not necessarily take place at the same time. Different project applications are submitted by project owners to the respective Intermediate Body in Austria and Czech Republic. Mirror projects can be approved complementary to already existing projects.
- **Other projects:** projects must show clear cross border impact, though they are financed only from one side with an ERDF subsidy contract.

In general, the selection of projects shall be done in the following steps:

- In the pre-evaluation phase the fulfillment of formal criteria is checked. The Intermediate Bodies (IBs) examine the applications according to administrative criteria and eligibility criteria.
- The IBs evaluate the project also according (a) a core selection criteria-standardised survey of the cross-border-quality in the projects' development and implementation and (b) a survey and typology of the projects expected impacts on functionally integrated regional development.

After completing the examination, the project proposal is given positive or negative statements on the individual aspects examined and reported by the respective IB to the Central Monitoring System.

All projects with complete application form are to be reported in CMS with status level 1 (first entry in CMS – obligatory) with defined minimum requirements.

- The JTS prepares materials for the Steering Committee to take decision on project selection and the ERDF funding. It examines the project applications as to whether they are complete and meet the selection criteria and provides project sheets to the members of the Steering Committee.
- The formal decision on the granting of the assistance is taken on by the Steering Committee on the basis of project selection criteria and the specific regulations applying to the Structural Funds. The Steering Committee selects projects for ERDF funding on the basis of the project

selection criteria and recommendations prepared by the IBs/JTS following the Rules of Procedure. The criteria for this selection phase are described in detail in the graph below.

Finally, the IBs set up the subsidy contract and make checks of the project implementation. Also the responsibility for the payments lies with these bodies.

4.1 Project Selection Procedure

The project selection procedure is illustrated in the table below. The selection procedure consists of a sequence of activities flowing from the regional level of the Intermediate Bodies and the Technical Secretariat to the Steering Committee. Please note that the **entire** Interreg III A selection process is contained only in the right side of the table, while the examination of compliance with directives and the co-financing eligibility of a project runs parallel in the preparatory phase.

Exceptions to the selection procedure laid down in this chapter are to be dealt pursuant to the Rules of Procedure of the Monitoring Committee for the implementation of the Interreg IIIA Austria – Czech Republic, article 4, last paragraph.

The Interreg IIIA project selection process is based on two pillars, as described in the CIP:

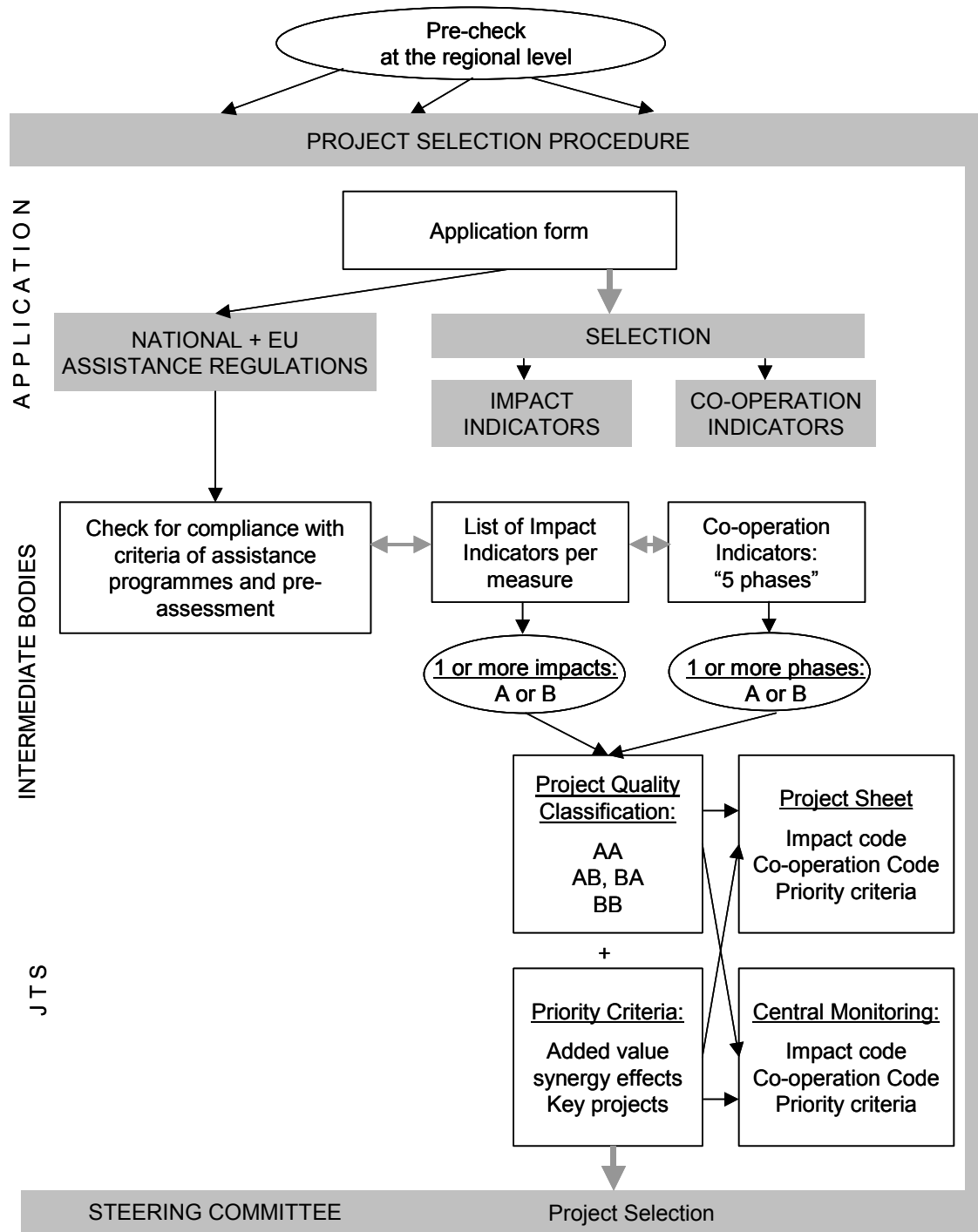
- On the one hand, it is based on the project impact with respect to the superordinate goals of regional integration of border regions, differentiated by measures and qualitatively captured in so-called **impact indicators** (see 3.2) and
- On the other hand, on the assessment of cross-border cooperation intensity in the creation and implementation of projects, which are captured by so-called **cooperation indicators** by project phase.

Both types of indicators are evaluated for each project based on the project applications by the Intermediate Bodies and summarised in a project sheet. The assessment allows a classification of the quality according to AA (2 or more impact indicators, 2 or more phases of project coordination), AB (only one cooperation phase), BA (only one impact) to BB (one impact, one cooperation phase).

Moreover, in order to obtain a more detailed selection within the quality classes, a supplementary rating was proposed for the subsequent selection step using so-called **priority criteria** (see 3.4).

Finally, the draft is accompanied by a summary **project sheet** (see 3.5).

Interreg IIIA: Project Selection Procedure



4.2 Project Selection Criteria

4.2.1 Impact indicators

The concept of evaluating impacts with respect to the project goals and the superordinate goal of regional integration of border areas is based on the **qualitative assessment** by the Intermediate Body, which sees **significant impacts** triggered in **one or several** areas considered **important** for a measure.

The judgement of whether an impact is significant or not and the formulation in so-called impact indicators is a multi-phase process. The long list contained in the following two pages of impact indicators, was drafted on the basis of an expert opinion, two statements and three workshops of the involved Austrian Intermediate Bodies and agreed-on by consensus. In a further vote, the issue at hand will be to harmonise the content with the proposals of the representatives of the Czech Republic.

Discussions in this context have resulted in the following agreement regarding the future application of the long list:

If, in the course of implementation it becomes apparent that certain project types would be worthy of receiving assistance which at the time of programming were not recognised as such or insufficiently, and based on the existing impact indicators were evaluated as non-eligible, then the following **procedure** shall apply:

1. Presentation of a proposal for supplementary indicators,
2. Detailed explanations for the intended changes given by the authority applying
3. Presentation by the administrative authority to the Monitoring Committee

“Long list” of impact indicators

Priorities and Measures		No.	Impact indicators at the project level: Impacts on the (cross-border) integration of border regions
P1 - Cross-border economic co-operation			
M 1 Development and aid for infrastructure in border regions	<input type="checkbox"/>	1	To create and expand cross-border business information and communication, and business services structures
	<input type="checkbox"/>	2	To improve the overall conditions for building up cross-border co-operation between and among businesses as well as co-operation networks
	<input type="checkbox"/>	3	Know-how and technology transfer, networking with science, R&D facilities
	<input type="checkbox"/>	4	Common external image / integrated marketing of border regions
	<input type="checkbox"/>	5	Reduction of legal and technical barriers
M 2 Cross-border co-operation at the enterprise level (SMEs) and support and advice for cross-border activities	<input type="checkbox"/>	6	Expansion of market / integrated development of offerings, marketing and external image
	<input type="checkbox"/>	7	Integrated production (factor combinations) and development of services, building up of supply and delivery relationships
	<input type="checkbox"/>	8	Intensifying partner searches, and the development and creation of co-operation projects and networks
	<input type="checkbox"/>	9	Know-how and technology transfer, consulting, common services for enterprises
	<input type="checkbox"/>	10	Support for co-operation among enterprises in sectors experiencing strong structural changes
M 3 Tourism and leisure time	<input type="checkbox"/>	11	Expansion of the market / integrated development of offerings, marketing and external image
	<input type="checkbox"/>	12	Development of services and integrated production (factor combinations)
	<input type="checkbox"/>	13	Intensifying partner searches, and the development and creation of co-operation projects and networks
	<input type="checkbox"/>	14	Know-how transfer, consulting, common services for enterprises
	<input type="checkbox"/>	15	Improving the services and products and the joint use of tourism infrastructure.
P2 - Accessibility			
M 1 Improvement of cross-border transportation and telecommunications infrastructure	<input type="checkbox"/>	16	(Preparation of) cross-border infrastructure, faster and improved transportation links
	<input type="checkbox"/>	17	(Preparation of) links to international transportation routes
	<input type="checkbox"/>	18	Cross-border networking of business locations
	<input type="checkbox"/>	19	Improving the services and products, and integrated use of information technology and telecommunications infrastructure.
	<input type="checkbox"/>	20	Cross-border development and use of IT applications, telematics services, etc.
M 2 Transport organisation, planning and logistics	<input type="checkbox"/>	21	(Preparation of the) improvement of cross-border infrastructure, faster and improved transportation links
	<input type="checkbox"/>	22	(Preparation of) links to international transportation routes
	<input type="checkbox"/>	23	Harmonised, integrated planning and use of transportation and telecommunications infrastructure
	<input type="checkbox"/>	24	Contribution to shifting traffic loads (from roads) through the harmonised/integrated use of transportation infrastructure and means
	<input type="checkbox"/>	25	Contribution to establishing and strengthening cross-border logistics

P3 - Cross-border organisational structures and networks			
M 1 Support for cross-border organisational structures and development of networks	<input type="checkbox"/>	26	Networking of private and/or public services
	<input type="checkbox"/>	27	To create and expand co-operation networks and structures
	<input type="checkbox"/>	28	Creation and reinforcement of structures for the regular, mutual exchange of information and project collaboration
	<input type="checkbox"/>	29	To create and expand support structures for cross-border projects
M 2 Small projects, including people-to-people actions and pilot projects	<input type="checkbox"/>	30	Reduction of mental barriers through the creation of a sustainable and broad co-operation base
	<input type="checkbox"/>	31	Creation of sustainable co-operation structures
	<input type="checkbox"/>	32	Development of new topics such as the first testing of new forms of collaboration in the meaning of pilot projects
	<input type="checkbox"/>	33	Contribution to strategic project development
P4 – Human resources			
M 1 Development of a regional labour market and expansion of the social system in line with EU enlargement goals	<input type="checkbox"/>	34	Reduction of organisational and legal barriers, and of information deficits
	<input type="checkbox"/>	35	Building up and intensification of collaboration between the labour market and social policy institutions as well as social partners
	<input type="checkbox"/>	36	Development of new, cross-border-adjusted occupational fields and qualifications
	<input type="checkbox"/>	37	Contribution to the development of instruments and cross-border labour market and social policy/development and observation
	<input type="checkbox"/>	38	Development of new job opportunities (creation of regional centres of core competencies)
M 2 Development of co-operation and infrastructure in the area of education, qualification and science	<input type="checkbox"/>	39	Ongoing collaboration and exchange of information between education and science institutions, creation of co-operation structures
	<input type="checkbox"/>	40	Development/implementation of education and qualification modules with a cross-border focus and multi-/dual lingual educational programmes and teaching materials
	<input type="checkbox"/>	41	Intensification of scientific co-operation and exchange
	<input type="checkbox"/>	42	Contribution to the development of reference systems for education and qualification
P5 - Sustainable spatial and environmental development			
M 1 Resource management, technical infrastructure and renewable energy	<input type="checkbox"/>	44	Contribution to the development and implementation of joint (environmental) standards and monitoring
	<input type="checkbox"/>	45	Co-ordinated environmental and resource management, creation of co-operation structures
	<input type="checkbox"/>	46	Utilisation of renewable energy resources and natural resources
	<input type="checkbox"/>	47	Improvement of environmental status/reduction of emissions
	<input type="checkbox"/>	48	Improving the standard and joint use of environmental infrastructure and technology
M 2 Nature and environmental protection measures, incl. national and nature parks	<input type="checkbox"/>	49	Contribution to the development and implementation of joint (environmental) standards and monitoring
	<input type="checkbox"/>	50	Integration and joint protection/use of ecologically valuable zones and natural heritage
	<input type="checkbox"/>	51	Co-ordinated management of nature and national parks, creation and expansion of co-operation structures
	<input type="checkbox"/>	52	Common external image and marketing of nature and national parks
	<input type="checkbox"/>	53	Improved standard and joint use of nature and national park infrastructure, environmental infrastructure and technology

M 3	Cross-border spatial development in rural and urban areas	<input type="checkbox"/>	54	Harmonisation of settlement and infrastructure development and planning, landscape planning/use, social and economic development of locations
		<input type="checkbox"/>	55	Harmonisation of planning and use of environmental and urban technologies
		<input type="checkbox"/>	56	Harmonisation of strategic preparation for EU enlargement
		<input type="checkbox"/>	57	Analysis and study of regional development potentials and strategies
		<input type="checkbox"/>	58	Creation and expansion of co-operation structures and networks
<hr/>				
	P6 - Special Support for Border Regions			
a)	Support for small- and medium-sized enterprises particularly affected by the enlargement	<input type="checkbox"/>	59	To create and expand cross-border business information and communication, and business services structures
		<input type="checkbox"/>	60	To improve the overall conditions for building up cross-border co-operation between and among businesses as well as co-operation networks
		<input type="checkbox"/>	61	Know-how and technology transfer, networking with science, R&D facilities
		<input type="checkbox"/>	62	Common external image / integrated marketing of border regions
		<input type="checkbox"/>	63	Reduction of legal and technical barriers
b)	Development of the cross-border transport network	<input type="checkbox"/>	64	(Preparation of) cross-border infrastructure, faster and improved transportation links
		<input type="checkbox"/>	65	(Preparation of) links to international transportation routes
		<input type="checkbox"/>	66	Cross-border networking of business locations
		<input type="checkbox"/>	67	Creating and expanding a jointly used tourism infrastructure (e.g. hiking paths, cycling- and horse riding tracks)
c)	Training activities and intercultural cooperation	<input type="checkbox"/>	68	Reduction of information deficits and mental barriers at the local and regional level
		<input type="checkbox"/>	69	Networking of private and/or public institutions with an intercultural focus
		<input type="checkbox"/>	70	Development and implementation of intercultural education and qualification offerings (with a focus on minorities)
		<input type="checkbox"/>	71	Promotion of minority language facilities with cross-border effects
		<input type="checkbox"/>	72	Development and implementation of cultural exchange programmes with longterm effects

Austrian Institute for Regional Studies and Spatial Planning
contracted by the Federal Chancellery

4.2.2 Indicators for the Quality of Co-operation in Project Development and Implementation (co-operation indicators)

In developing and implementing INTERREG projects, the diverse project phases and steps can be differentiated (preparation, implementation, etc.). Each of these steps can be completed duly respecting cross-border co-operation or independently. The **project evaluation and selection** will be based on the **cross-border quality of the individual steps of the project development and implementation**, which are to be recorded in the project application.

INTERREG Phases	Project phases	Co-operation indicator
	1. Preparation until application	<ul style="list-style-type: none"> Project concept with partners from the neighbouring country <p>Proof: Partners, contribution to project development</p>
Application	Approval	
	2. Planning the implementation / tender	<ul style="list-style-type: none"> Planning the implementation with partners from the neighbouring country <p>Proof: Partners, contribution to planning the implementation</p>
	3. Implementation / construction	<ul style="list-style-type: none"> Implementation with partners from the neighbouring country <p>Proof: Partners, contribution to the implementation (according to project milestones)</p>
	4. Financing	<ul style="list-style-type: none"> Financing with partners from the neighbouring country <p>Proof: Partners, financing contribution</p>
Project end	5. Use/operation after completion of project	<ul style="list-style-type: none"> Use of results/installations by persons/institutions/firms from the neighbouring country <p>Proof: User, type of use</p>

4.3 Priority criteria for project selection

In accordance with the classification of the projects submitted by impact and quality of the cooperation in project development and implementation, as well as the grouping by AA AB, BA, BB, the next project selection step is taken. This is done with a view to the fulfilment of the goals and target criteria of the programme. These are defined in content in the light of the goals aimed at and also of the project quality such as its subsequential impact on other later projects. The following criteria are proposed within the scope of the Interreg IIIA project selection:

- **Additional impact/added value:** Positive effects in other areas which are also covered by the project goals, synergy effects with other projects and/or measures of the programme.
- **Assessment as a key project:** A main project goal is to motivate further projects in areas which meet the programme goals.
- **Special impacts relating to the implementation of EU policies:** Compliance with the criteria mentioned in selecting the project is designed to attain a higher overall impact of the Interreg IIIA Programme than otherwise possible. This is encouraged by stressing the interaction with other programme areas and projects, thus using potential synergy effects and enhancing these.

4.4 Minimum requirements of information on project level

The project sheet presented below contains the minimum requirements of information on project level, which is presented to the Steering Committee. In general, this information is exchanged between Intermediary Bodies and the Joint Technical Secretariat via Monitoring System. In case the Monitoring System is not functioning properly, the presented project sheet shall be used for information exchange.

Projektblatt / Projektový formulář INTERREG IIIA Österreich - Česká republika Projektnummer Datenbank	Laufnummer: -----
	Pořadové číslo: -----
	FS eingelangt: -----
	Doručeno koordinačnímu místu: -----
	Status: -----
	Aktenzeichen Förderstelle: -----
abgelehnt/bewilligt in LA am: -----	
zamítnut/schválen v Řídícím výboru dne: -----	
EFRE-Fördervertrag am: -----	
EFRE-smlouva o podpoře z: -----	

Koordinierende Förderstelle/ Místo podpory	-----
Projekt-Code / Kód projektu	Land,Region / ----- Země, region: -----
Projektbeschreibung/Popis projektu	Akronym/Zkratka: -----
Titel/Naslov projektu:	----- -----

Träger/Název	-----
Anschrift/Adresa	-----
Ansprechpartner/Kontaktní osoba	-----
Rechtspersönlichkeit/Právní subjektivita	-----

Projektpartner in Tschechien / Partner projektu v Rakousku	-----
Anschrift/Adresa	-----
Ansprechpartner/Kontaktní osoba	-----
Rechtspersönlichkeit/Právní subjektivita	-----

Sonstige Projektpartner in Österreich/ Jiné partner projektu v Česká republika	-----
Anschrift/Adresa	-----
Ansprechpartner/Kontaktní osoba	-----
Rechtspersönlichkeit/Právní subjektivita	-----
Anschrift/Adresa	-----
Ansprechpartner/Kontaktní osoba	-----
Rechtspersönlichkeit/Právní subjektivita	-----

Zusammenfassende Projektbeschreibung (Ausgangslage, Projektziele, Aktivitäten)

Celkový popis projektu (výchozí situace, cíle projektu, aktivity):

Ausgangslage:

Výchozí situace:

Projektziele:

Cíle projektu:

Aktivitäten:

Aktivty:

Räumlicher Wirkungsbereich/ Prostorový okruh působnosti:	-----
---------------------------------------------------------------------	-------

Projektbeginn – ende (Datum)/ Zahájení projektu- konec (datum):	-----
----------------------------------------------------------------------------	-------

wichtigste Meilensteine/ Hlavní milníky:	-----
-----------------------------------------------------	-------

Gesamtkosten (in €) indikative Aufteilung Celkové náklady (v CZK) Indikativní rozdělení	Österreich/ Rakousko	Česká republika / Česká republika	Anmerkungen/ Poznámky
Personalkosten/Osobní náklady	0,0	0,0	
Sachkosten/Věcné náklady:	0,0	0,0	
Externe Dienstleistungen: Externí služby:	0,0	0,0	-----
Investitionen/Investice:	0,0	0,0	
Öffentlichkeitsarbeit: Public relations:	0,0	0,0	
Gesamtkosten/ Celkové náklady:	0,0	0,0	-----
Einnahmen:	0,0	0,0	
anrechenbare Kosten: Započitatelné náklady:	0,0	0,0	-----

Finanzierung (in Euro)/ Financování (v CZK):	Österreich/ Rakousko	Česká republika / Česká republika	Anmerkungen/ Poznámky
EU-EFRE EU-EFRE	0,0	0,0	
Nationale Beteiligung gesamt: Národní podíl- celkem:	0,0	0,0	
Bund/Spolek:	0,0	0,0	
Land/Země:	0,0	0,0	-----
Gemeinde/Obec:	0,0	0,0	
sonstige öffentliche Mittel: Jiné veřejné prostředky:	0,0	0,0	
Private Mittel/ Prostředky ze soukromého sektoru:	0,0	0,0	
Gesamtfinanzierung: Financování celkem:	0,0	0,0	-----
EU-Beteiligung in %: Účast EU (v %):	0,0%	0,0%	-----

Ergebnis der Projektprüfung/Výsledek revize projektu			
1. Formale Kriterien / Formální kriteria	erfüllt / Splňuje <input type="checkbox"/>	nicht erfüllt / nesplňuje: <input type="checkbox"/>	
Anmerkungen/Poznámky	-----		
2. Grenzüberschreitende Kriterien/ Kriteria přeshraničního dopadu			
Wirkungsindikatoren/ Ukazatele dopadu, účinku		Kooperationsindikatoren/ Ukazatele spolupráce	
<i>Wesentliche Projektwirkungen/ Hlavní účinky projektu:</i>	<i>Nr. des Indikators / Číslo ukazatele:</i>	<i>5 Projektphasen / 5 Fáze projektu:</i>	<i>Durchführung mit Partner / Realizovaný s partnerem:</i>
Wirkung 1/Účinek1:	(vgl. Langliste) / (viz. Longlist): -----	1 Konzept, Antrag / Návrh, Žádost	<input type="checkbox"/> ja
Wirkung 2/Účinek 2:	-----	2 Planung d. Umsetzung / Plánování realizace cílů	<input type="checkbox"/> ja
Wirkung 3/Účinek 3:	-----	3 Umsetzung, Investition / Realizace cílů, Investice	<input type="checkbox"/> ja
Anzahl der erwarteten Wirkungen/ Očekávané účinky:	-----	4 Finanzierung / Financování	<input type="checkbox"/> ja
Integrationswirkung gesamt/ Celkové účinky na integraci	A <input type="checkbox"/> B <input type="checkbox"/>	5 Nutzung nach Ende / Využití po skončení realizace projektu	<input type="checkbox"/> ja
		Kooperationsintensität/ Intenzita spolupráce	A <input type="checkbox"/> B <input type="checkbox"/>
3. Prioritätskriterien / Prioritní kriteria:	Zusatzwirkungen, Synergien: Dodatečný efekt, Synergie: <input type="checkbox"/> ja	Schlüsselprojekt: Klíčový projekt: <input type="checkbox"/> ja	
4. Auswirkung auf horizontale EU-Politiken/Účinek na horizontální politiku EU			
Chancengleichheit/ Rovné příležitosti	<input type="checkbox"/> 0	<input type="checkbox"/> +	<input type="checkbox"/> ++
Nachhaltigkeit/Trvalá udržitelnost	<input type="checkbox"/> 0	<input type="checkbox"/> +	<input type="checkbox"/> ++
Zusammenfassung/Shrnutí			
Stärken/Silné stránky	Schwächen/Slabé stránky	Auflagen/Výdaje	
-----	-----	-----	
Gemeinsames Projekt ja/nein	-----		
Spiegelprojekt ja/nein	-----		
Empfehlung durch die koordinierende Förderstelle/ Doporučení z koordinujícího místa podpory:			
<input type="checkbox"/> abzulehnen / zamítnuto: -----			
<input type="checkbox"/> zu genehmigen ohne Auflagen / Ke schválení bez podmínek: -----			
<input type="checkbox"/> zu genehmigen mit folgenden Auflagen/ Ke schválení s následujícími podmínkami: -----			
Stellungnahme durch das Gemeinsame Technische Sekretariat/Stanovisko společného technického sekretariátu:			
Projektbeschreibung: -----			
Kosten und Finanzierung: -----			
Meilensteine: -----			
Grenzüberschreitende Kriterien: -----			
Sonstiges: -----			
Empfehlung durch den Lenkungsausschuß/Doporučeno řídicím výborem:			
<input type="checkbox"/> abzulehnen / zamítnuto: -----			
<input type="checkbox"/> zu genehmigen ohne Auflagen / Ke schválení bez podmínek: -----			
<input type="checkbox"/> zu genehmigen mit folgenden Auflagen/ Ke schválení s následujícími podmínkami: -----			

5 INFORMATION AND PUBLICITY ACTIVITIES

5.1 General

The information and publicity measures for the interventions of the Structural Funds are aimed at publicising the actions of the European Union, increasing transparency and creating a uniform image of the interventions throughout all member states. (see also Commission Regulation (EC) No. 1159/2000 of 30 May 2000 on information and publicity measures to be carried out by the Member States concerning assistance from the Structural Funds)

The information and publicity measures are presented in the form of a communication plan in the Programme complement. Their implementation shall be the responsibility of the respective administrative body responsible for the interventions.

The communication plan contains information on

- the goals and target groups;
- the content and the strategy of the communication and information measures;
- an indicative budget;
- the administrative bodies or institutions responsible for their implementation;
- the evaluation criteria used for assessing the measures implemented.

(Compare with the implementation regulations on information and publicity for interventions under the Structural Funds pursuant to the Annex to Regulation (EC) No. 1159/2000).

5.2 Goals and target groups

The information and publicity measures within the scope of the Interreg IIIA Austria – Czech Republic are designed

a) to target potential and final beneficiaries as well as

- regional and local authorities and other public bodies,
- professional associations and business communities,
- economic and social partners,
- non-governmental organisations, especially bodies to promote equality between men and women, and bodies working for the protection and improvement of the environment,
- project operators and promoters,

and serve the purpose of informing on the possibilities offered by the European Union, Czech Republic and Austria and guaranteeing the transparency of the joint interventions;

b) to inform the general public of the role that the European Union plays together with Austria and Czech Republic in the respective interventions and of their results.

5.3 Content and strategy

The information and publicity measures within the scope of the Interreg IIIA Austria – Czech Republic are primarily designed:

a) to guarantee transparency vis-à-vis potential and final beneficiaries

- general information on the Community Initiative Interreg IIIA
- Publication of abbreviated versions of the joint planning documents (priorities and measures) indicating the participation of the corresponding fund
- to give an overview of competencies, organisation and project selection procedures
- standardised information on project applications (application authority, contacts at the national, regional and local levels)
- announcement of selection criteria and valuation mechanisms for tenders and project applications

This information will be available for downloading on the respective programme websites (see Annex 2).

b) to inform the public

- Announcements on the start of the programme in the media, giving an appropriate presentation of the participation of the European Union
- Ongoing communication on the stages of a project's implementation throughout the entire programme planning period
- Project-specific information in accordance with the provisions in the Annex to the Regulation (EC) No. 1159/2000 figure 3.2.2.2
- Presentation of the final results of the Interreg IIIA 2000-2006

The general strategic goal of the information and publicity measures within the scope of Interreg IIIA Austria – Czech Republic is to create a uniform public image which should achieve the status of a brand name or a "corporate identity" during the implementation period. To this end, a common logo will be used on printed matter, publications, in the printed and electronic media.

For the strategic implementation of the contents listed above, the following shall be used apart from the information and publicity means mentioned in the Annex to the Regulation (EU) 1159/2000 figure 6 (billboards, commemorative plaques, notification to beneficiaries):

- A programme-specific website (see Annex 2) providing ongoing information to the general public, potential and final beneficiaries as well as structured networks in the Internet, which is prepared by the Technical Secretariat in close cooperation with the Intermediate Bodies of the Länder Oberösterreich, Niederösterreich, Wien, Jihočesky, Vysočina and Jihomoravsky.
- Information material in the form of leaflets, information binders and brochures

- The publication of periodical magazines (at the regional level)
- Ad hoc press releases, press conferences to inform the national, regional and local media (e.g. on the start of the programme, best practices, project completions, Monitoring Committee meetings, annual implementation reports)
- Regional and local information events and networking of project organisers, financing institutions and funding bodies (kick-off event at the start of a programme at the Länder level as well as information events at the regional level)
- Contributions to special-interest events, articles in special-interest magazines

The application of the above-mentioned information and publicity measures are differentiated within the programme planning period (2000 to 2006) by three phases each of which having different requirements:

(a) Information on the start and the announcement of the Interreg IIIA Austria - Czech Republic

The goal of this phase is to spread the information as widely as possible (potential and final beneficiaries as well as the general public) and to inform in general about the programme, contact partners, info points, procedures and decision-making structures, etc.

Communication means: Kick-off event in Oberösterreich, Niederösterreich and Wien; press conferences, press releases on the start of the programme (as fast as possible after the programme is approved by the EC).

(b) Ongoing information, communication and presentation

In this phase, the public is regularly informed on the current status of the implementation of the programme and on the completion of successful projects.

Furthermore, clear information (homogenous) at the regional and local level on the administrative procedures and information on the selection criteria and valuation mechanisms are provided.

Regular information and networking events by project organisers, financing institutions and funding bodies are crucial in this phase for the implementation of the joint programme planning document.

An important date for information activities within this period is the accession date of Czech Republic. Information events on the possibilities of INTERREG IIIA take place around May 2004 on regional level on both sides of the border

Communication means: Brochures, information events, organisation of events to share experiences among projects, press releases on the status of the implementation.

(c) Presentation of results and review

As of the end of the programming planning period, a presentation of the completed projects and a review of the cooperation projects created is given.

Communication means: Brochures, final events, etc.

5.4 Indicative budget

In accordance with the CIP, all measures projected for the communication action plan are covered by Technical Assistance 2 (other activities within the scope of Technical Assistance pursuant to Rule 11, paragraph 3). All in all, for TA 2 a sum of EUR 664,000 is available as an indicative budget, **thereof 30%** will be made available for information and publicity measures.

5.5 Competent authority

The Managing Authority for carrying out the information and publicity measures as set out in the Regulation is:

Federal Chancellery, Dept. IV/4, Hohenstaufengasse 3, A-1010 Vienna

Phone: ++43 1 53115-2910, Fax: -2180,

e-mail: iv4post@bka.gv.at.

In tasks referring to the information and publicity activities the Managing Authority is assisted by the National Authority in Czech Republic:

Ministry for Regional Development (MRD), Department for EU-Programmes

Staroměstské náměstí 6, CZ-110 00 Prague 1

Phone: ++420 2 248 6111436

e-mail: skojir@mvr.cz.

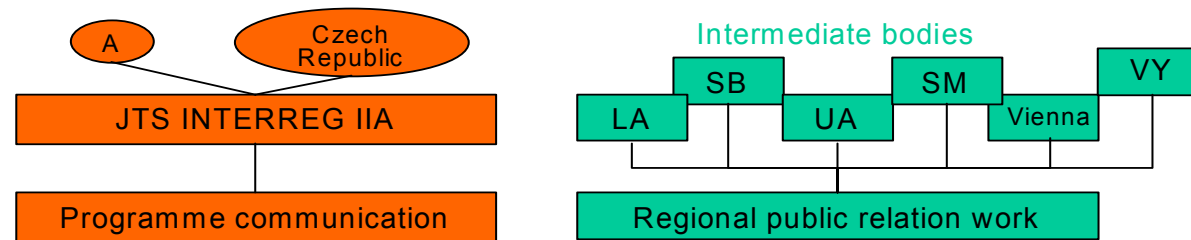
5.6 Evaluation criteria

The evaluation criteria for the efficiency of the information and publicity measures are:

- Increase in the recognition rate of the opportunities available through the common interventions of the European Commission and of Member States for potential final beneficiaries and project organisers;
- Information measures on the role of the EU in the assistance provided by the Structural Funds;
- Increase in the level of knowledge of the programme among the general public;
- Communication of a homogenous “corporate identity”.

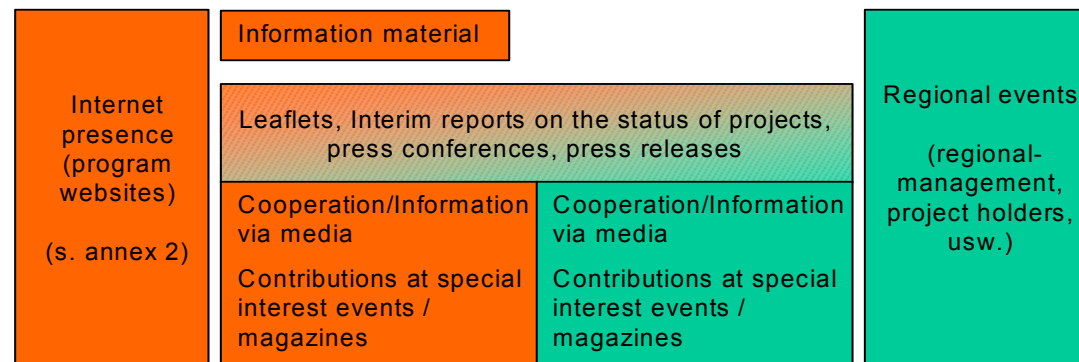


Overview of the communication means used



Time line

- awareness rising
- ongoing presentation
- completion



LA...Lower Austria / SB...South Bohemia / UA...Upper Austria / SM...South Moravia / VY...Vysočina

Annex 2: Programme website www.at-cz.net

Creating a website for the Interreg IIIA Austria – Czech Republic is the fastest and most efficient way of reaching the primary target group, namely, the interested public and providing quick, detailed information on Interreg IIIA Austria – Czech Republic. The website is on-line since February 2002 in German, Czech and English. Continuous up-date of the website is done by the Technical Secretariat. Monthly webreports are available at the JTS.

Furthermore a secured internal area has been installed and became operative at the end of 2002:

the so-called Backoffice area under www.at-cz/Service/intern: From December 2002 onwards the JTS offered all Committee members an information repository which can be accessed through the programme website. Basically it consists of a personal Calendar and a File Manager which contains all necessary internal programme information such as invitations to meetings and documents in a download section. A detailed user manual was elaborated and disseminated to all potential users. Thus, the website serves ...

- as a platform for all relevant programme issues and information of the Technical Secretariat (e.g. general targets of the programme, contacts, success stories to date, programme news, etc.)
- as a distribution centre for all relevant programme documents (e.g. Joint Programming Document, Programme Complement, project application forms, the logo for downloading, etc.)
- as a means of communication to the “outside” (e.g. platform for partner searches via e-mail, list of interesting and relevant links, etc.)
- and as a means of “internal” communication (e.g. provision of documents for meetings of the monitoring committee)

The information on the Web offered is ...

- ... for persons and institutions directly involved in the programme or in the project as well as for interested “outsiders”, and
- ... for partners and interested parties from the regions involved as well as for interested parties from other regions

The content for the website is prepared by the Joint Technical Secretariat, translated and given to the Webmaster. The website is generally bilingual (German and Czech), English is used where necessary (e.g. for specific documents).

The main menu contains the following contents:

- News – relevant information for the interested general public and actors involved (supraregional events, public relations work)

Communication programme

- Relevant programme information (maps, documents, contacts)
- Project applications and approvals, i.e., all information needed for assisting projects
- All project-related information (completed and current) and project ideas
- Additional information such as links, FAQ

Due to the accession of Czech Republic to the EU the programme website will be adapted for an even more intensive use for the programme partners and the interested public.

6 DESCRIPTION OF THE AGREEMENT ON DATA EXCHANGE BETWEEN THE EU AND THE MANAGING AUTHORITY/PAYING AUTHORITY

As a supplement to the presentation of monitoring and electronic data exchange given in the Community Initiative Programme (CIP) INTERREG IIIA Austria-Czech Republic 2000-2006, we would like to add the following explanations as part of the Programme Complement:

The centralised nationwide, standard monitoring procedure for the implementation of the programme for all Austrian Objective programmes and the INTERREG IIIA programme is carried out by the ERDF Monitoring Authority that belongs to the federal agency (ERP-Fund) assigned to the corresponding fund or by the Paying Authority (Federal Chancellery).

The monitoring system of the Structural Funds (MSSF) which serves for substantial and financial monitoring of projects co-financed by the EU Structural Funds exists under the auspices of the Czech Ministry for Regional Development. This system also serves as the source of data for the financial system called Viola which is used/implemented by the Ministry of Finance (Sub-paying authority) as the program for account operations within the Structural Funds. Monitoring system is used at all levels of implementation as well as co-financing of projects, in particular by Managing authority officials (Ministry for Regional Development), intermediary bodies and beneficiaries. Monitoring system MSSF is created from three moduls which serve to various organizational levels responsible for implementation of the EU funds, however these moduls represent only one integrated block.

The central ERDF monitoring system is built on a relational database that allows the clearly structured storage of the data (as recommended also by the EC in the context of electronic data exchange). The programme structure approved by the EC and by the competent Monitoring Committee for INTERREG IIIA Austria-Czech Republic (pursuant to the CIP and the Programme Complement) has been used as the basis for clearly structuring and defining the hierarchies of the database.

The collection of data (1 record per project) is done decentralised in line with the federal administration structure in Austria and Czech Republic by the competent Intermediate Bodies (IB) and the data is sent in regular intervals to the central ERDF Monitoring Authority. The reporting authority is responsible for the correctness of the data sent. The data sent to the Monitoring Authority shall be considered official data. Information that deviates from the official data on the programme implementation may be used for controlling purposes, but shall not be valid for official reports.

The main fields of the records are:

- Name of recipient of funds (name, address, etc.)

- Information on the amount of the funds approved broken down by source of the funds (ERDF, national, Intermediate Bodies, other)
- Information on the amount of the subsidies paid out (broken down in the same manner as the approved subsidies)
- Information on approved projects (eligible project costs, project locations, etc.)
- Information on project-related indicators (collected at the individual project level) pursuant to the Programme Complement (broken down by output, result and impact), defining as a minimum the standard core indicators for the programme

Indicators that cannot be collected at the individual project level (a note is to be made in the description of the measure), shall not be collected by the central monitoring system, but must be collected separately (e.g. together with the evaluation)

The monitoring system is designed to collect data per Structural Fund intervention area with an EC-assigned intervention code (e.g. 1722 = tourism immaterial investment) and to link these to the indicators compiled at the individual project level.

Note on the indicators: The detailed indicators relating to measures and projects (pursuant to Art. 18 par. 3 letter a of Council Regulation No. 1260/99) shall be given for each description of the measures. The issues of environment, equal opportunity and geographical regional classification shall follow the classification given as requested by the EC for the implementation of EU projects, which differs from the core indicator list. The following information shall be reported: whether the project a) has the environment as its main focus, b) is environment-friendly or c) is environmentally neutral; whether the project a) has equality between sexes as its main focus, b) is positive in terms of male-female equality or c) is neutral in terms of such equality; whether the location of the project is a) urban, b) rural or c) not geographically delimited.

As all monitoring data for the ERDF area are stored in a relational database, the data may be easily aggregated, thus providing a continuous overview of the current stage of implementation. The overview is updated every three months in the central monitoring system relating to the financial status of the implementation.

The fund-specific data of the central Monitoring Authority shall be available without restrictions to the Managing Authority and the Joint Technical Secretariat to assist them in their monitoring work for all programmes receiving subsidies from several different funds. The updated status of the monitoring of the measures shall be made available to the Managing Authority and the Joint Technical Secretariat as well as to the Federal Ministry of Finance, the competent authorities in the EC, and if necessary, to the financial auditing bodies.

The Austrian authorities shall be responsible for taking the necessary steps to enable the electronic exchange of data relating to measures between the EC and Austria. For this purpose,

the already existing electronic and functioning reporting systems set up for the Structural Fund period 1995-1999 was adapted and expanded.

The electronic exchange of data for the ERDF shall be based on the ERDF monitoring system centrally installed in Austria. As all the data are stored centrally in a relational database, it is possible to export specific data for specific needs. It is also possible to create flat-file formats as defined by the GD Regio in 1999.

The feasibility of this concept was proven during the Structural Fund period 1995-1999 based on the aggregated implementation status data received (expenditure (actually) incurred) relating to measures using flat-file formats (for each EU programme, one flat file). The test phase conducted between Austria and the GD Regio regarding the electronic exchange of data was successfully completed in 1999 and the relevant offices of the GD Regio confirmed that the system in Austria is reliable.

Upon the request of the EC [EC document of 20 Oct. 2001 on the subject of "Structural Funds 2000-2006 – Electronic Data Exchange between Member States and the European Commission (File interface description)"] the electronic exchange of data between the EC and Austria should take place in at least five areas (optional in six areas). The list below names the areas and the competent authority for transmitting the data electronically in Austria:

Type of information:	Contact
1. Information on the programming (= financing plan)	Joint Technical Secretariat / ERDF Monitoring Authority
2. Expenditure confirmations (payment requests)	ERDF Paying Authority
3. Preview of payables	ERDF Paying Authority
4. Annual implementation report/final report	Joint Technical Secretariat / ERDF Monitoring Authority
5. Information on the commitment of the funds and expenditure (optional)	ERDF Paying Authority / Monitoring Authority
6. Earmarked funds and expenditure by EC	EC

The use of the monitoring data is subject to the provisions of Austrian data protection laws.

7 FINANCING PLAN

INTERREG IIIA Austria – Czech Republic 2000-2006 Financing Plan 2000-2006 total (amounts in EURO current prices)

including indexation and financial shifts October 2006

	total costs a=b+f	public cofinancing	EU-contribution	%	national	public	private
		total b=c+e	ERDF ¹ c		cofinancing total d=e+f	cofinancing ² e	cofinancing f
1. Cross-border Economic Co-operation	20.588.072	18.544.485	11.530.036	30%	9.058.036	7.014.449	2.043.587
1.1: Development and Support of Business Sites and Business Service Infrastructure in Border Areas	4.854.633	4.756.666	2.605.225		2.249.408	2.151.441	97.967
1.2: Cross-border Cooperation of Enterprises (SMEs) and Counselling and Support for Crossborder Business Activities	6.281.991	5.468.671	3.338.282		2.943.709	2.130.389	813.320
1.3: Tourism and Leisure	9.451.448	8.319.148	5.586.529		3.864.919	2.732.619	1.132.300
2. Accessibility	8.361.953	8.361.933	5.028.300	13%	3.333.653	3.333.633	20
2.1: Improvement of Crossborder Transport and Telecommunication Infrastructure	4.081.060	4.081.060	2.744.030		1.337.030	1.337.030	0
2.2: Transport Organisation, Planning and Logistics	4.280.893	4.280.873	2.284.270		1.996.623	1.996.603	20
3. Cross-border Organisational Structures and Networks	9.904.489	8.819.842	5.688.911	15%	4.215.578	3.130.931	1.084.647
3.1: Support of Crossborder Organisational Structures and Development of Networks	6.460.179	5.988.179	3.643.356		2.816.823	2.344.823	472.000
3.2: Micro-projects including People-to-People Actions and Small Pilots	3.444.310	2.831.663	2.045.555		1.398.755	786.108	612.647
4. Human Resources	10.494.489	9.874.756	5.653.911	15%	4.840.578	4.220.845	619.733
4.1: Development of Regional Labour Markets within the Context of EU Enlargement	2.434.000	2.044.967	1.305.000		1.129.000	739.967	389.033
4.2: Development of Co-operation and Infrastructure in the Fields of Education, Training and Science	8.060.489	7.829.789	4.348.911		3.711.578	3.480.878	230.700
5. Sustainable Spatial and Environmental Development	15.298.378	14.287.345	7.905.856	21%	7.392.522	6.381.489	1.011.033
5.1: Resource Management, Technical Infrastructure and Renewable Energy Supply	5.162.082	4.288.049	2.689.412		2.472.670	1.598.637	874.033
5.2: Measures for Nature and Environmental Protection including National and Nature Parks	7.922.800	7.817.800	4.076.900		3.845.900	3.740.900	105.000
5.3: Cross-border Spatial Development in Rural and Urban Areas	2.213.496	2.181.496	1.139.544		1.073.952	1.041.952	32.000
6. Special Support for Border Regions	1.651.794	1.651.794	825.897	2%	825.897	825.897	0
6.1: Special Support for Border Regions	1.651.794	1.651.794	825.897		825.897	825.897	0
Technical Assistance	2.929.334	2.929.334	1.648.000	4%	1.281.334	1.281.334	0
Technical Assistance I	2.314.667	2.314.667	1.304.000		1.010.667	1.010.667	0
Technical Assistance II	614.667	614.667	344.000		270.667	270.667	0
TOTAL	69.228.509	64.469.489	38.280.911		30.947.598	26.188.578	4.759.020

¹ The EU-contribution has been calculated on the basis of the total costs.

² The figures are identical with those in column 12 ("Sonstige") in the Commission Decision of 27.9.2002